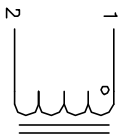


The information contained in this drawing is the sole property of CWS Coil Winding Specialists. Any reproduction in part or whole without written permission of CWS Coil Winding Specialists is prohibited.

REVISION HISTORY

REV	ECN	DESCRIPTION	BY	DATE	CHK	DATE
B		PRODUCTION RELEASE	RPR	6/20/06	JLJU	6/20/06



SCHEMATIC

7 BUILT TO ROHS COMPLIANCE AND LEAD FREE.

6 WHERE SHOWN, USING A PERMANENT MARKING METHOD IF APPLICABLE. MARK PART NUMBER AND REVISION

5 FLUSH WITH THE COIL EDGE, AS SHOWN
REMOVE INSULATION AND TIN LEADS APPROX. 0.75 INCH

4 WIND WIRE TO CORE EVENLY SPACED
CONSTRUCTION:

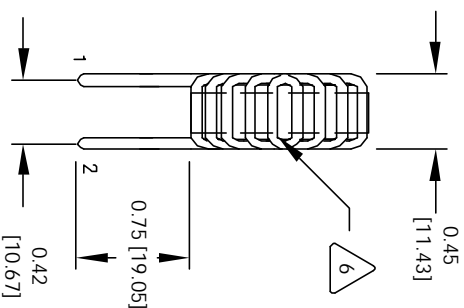
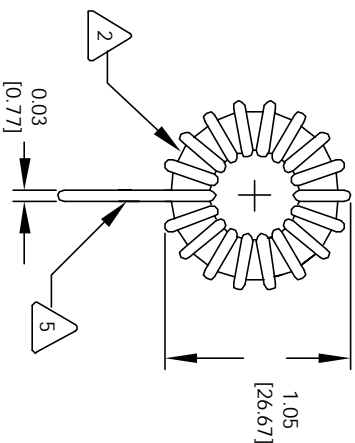
- WEIGHT = 26.8 GRAMS
- HI-POT TEST FOR WIRE TO CORE = 500 VDC
- INDUCTANCE @ RATED CURRENT = 242.0 uH
- DC CURRENT RATING = 3.0 AMPS MAX
- DGR = 129 MILLI-OHMS, MAX
- INDUCTANCE @ 0 AMPS = 500.0 uH, ± 20%, 1 KHZ., 0.25 Vrms
- SPECIFICATIONS @ 25 °C

2 WIRE: UL RECOGNIZED 130°C RATED MAGNET WIRE
CORE: COATED IRON POWDER

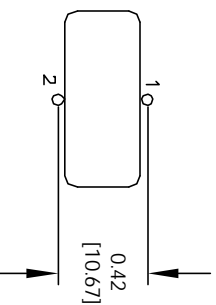
1 CORE COATING RATING CLASS B (130°) REQUIRED
MATERIAL: UL RECOGNIZED 94V-0 FOR FLAMMABILITY

NOTES: UNLESS OTHERWISE SPECIFIED, TOROIDAL INDUCTOR
READ FROM BOTTOM UP.

VERTICAL CONFIGURATION



MOUNTING HOLES PATTERN



CODE	IDENT	MFG. P/N	DESCRIPTION	ITEM NO.								
PARTS LIST												
AUTOCAD	X											
SOLIDWORKS												
DESIGN	DATE											
DRWN	RPR	6/20/06										
ENGR	JLJU	6/20/06										
APPR	JLJU	6/20/06										
<table border="1"> <thead> <tr> <th>SIZE</th> <th>DWG. NO.</th> <th>REV</th> </tr> </thead> <tbody> <tr> <td>B</td> <td>TC-501M-3A-94V</td> <td>B</td> </tr> </tbody> </table>					SIZE	DWG. NO.	REV	B	TC-501M-3A-94V	B		
SIZE	DWG. NO.	REV										
B	TC-501M-3A-94V	B										
<table border="1"> <thead> <tr> <th>SCALE</th> <th>SHEET</th> <th>OF</th> <th>1</th> </tr> </thead> <tbody> <tr> <td>2=1</td> <td>1</td> <td>1</td> <td>1</td> </tr> </tbody> </table>					SCALE	SHEET	OF	1	2=1	1	1	1
SCALE	SHEET	OF	1									
2=1	1	1	1									

UNLESS OTHERWISE SPECIFIED
DIMENSIONING AND TOLERANCE PER ANSI Y14.5M AND (DIMENSIONS ARE IN INCHES AND (DIMENSIONS) TOLERANCE INCHES: .XXX=±.005 .XX=±.015 .X=±.030 TOLERANCE METRCS: .XXX=±.127 .XX=±.25 ANGLE PROJECTION
DO NOT SCALE DRAWINGS