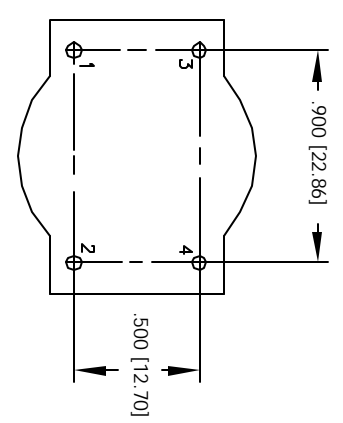
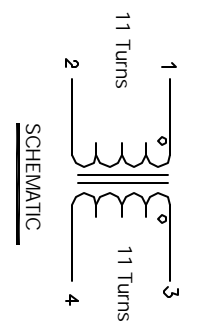
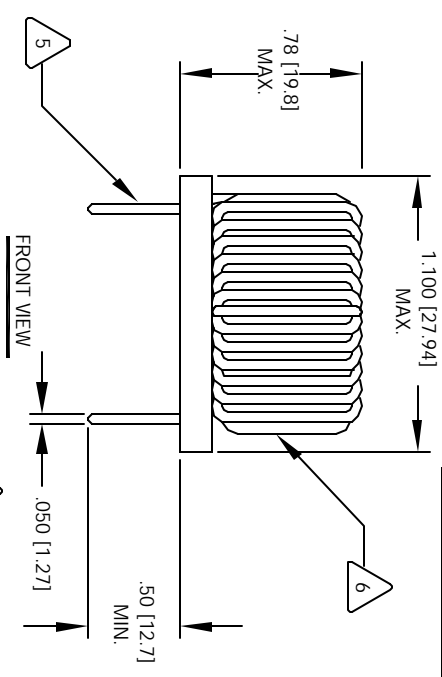


The information contained in this drawing is the sole property of CWS Coil Winding Specialist. Any reproduction in part or whole without written permission of CWS Coil Winding Specialist is prohibited.

REVISION HISTORY

REV	ECN	DESCRIPTION	DATE	BY	CHK	DATE
C		PRODUCTION RELEASE	1/04/05	TKK	JLU	1/04/05

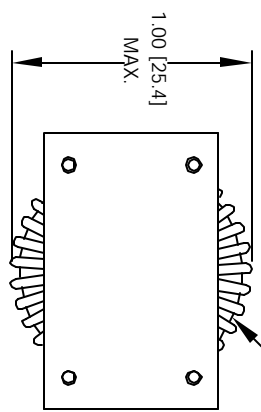


- 6 WHERE SHOWN, USING A PERMANENT MARKING METHOD MARK PART NUMBER AND REVISION IN APPROX
- 5 TO THE CORE MUST REST FLAT ON PCB). LEADS MUST BE TANGENT FLUSH WITH THE COIL EDGE, AS SHOWN (I.E. COIL REMOVE INSULATION AND TIN LEADS APPROX. 0.50 INCH
- 4 CORE AND EVENLY SPACED WIND 11 TURNS, # 16 AWG SINGLE LAYER ON EACH SIDE OF CONSTRUCTION:
- 3 TO INSURE INTEGRITY OF WINDING SEPARATION HI-POT TEST FOR INTERWINDING ISOLATION = 1250VDC CURRENT RATING : 12 AMPS DCR = 6.5 MOHMS MAX./COIL. L = 1.0 mH MIN/COIL. 1 KHZ, 1Vrms. SPECIFICATIONS @ 25°C :

- 2 APPROVED PART OUTER WRAP: 3M #11 OR #69 OR OTHER CWS WIRE: UL RECOGNIZED 155°C RATTING MAGNET WIRE CWS BYTEMARK OR OTHER APPROVED PART CORE: COATED FERRITE TOROID, HIGH PERM MNZN
- 1 SPACER & BOBBIN RATING CLASS B (130°C) REQUIRED MATERIAL: UL RECOGNIZED 94V-0 FOR FLAMMABILITY

NOTES: UNLESS OTHERWISE SPECIFIED, READ FROM BOTTOM UP.

BOTTOM VIEW



QTY	CODE IDENT	MFG. P/N	DESCRIPTION	ITEM NO.
			<b>PARTS LIST</b>	
	AUTOCAD SOLIDWORKS SIGN	X		
	DATE			
DRAWN	TKK	1/04/05		
CHKD	JLU	1/04/05		
ENGR	KSUM	1/04/05		
APPR	JLU	1/04/05		
SCALE	<b>B</b>			
SIZE	OVER. IN.			
	<b>12 Amps</b>			
	<b>C-B2134-00</b>			
	<b>2=1</b>			
REV	C			