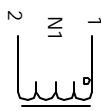


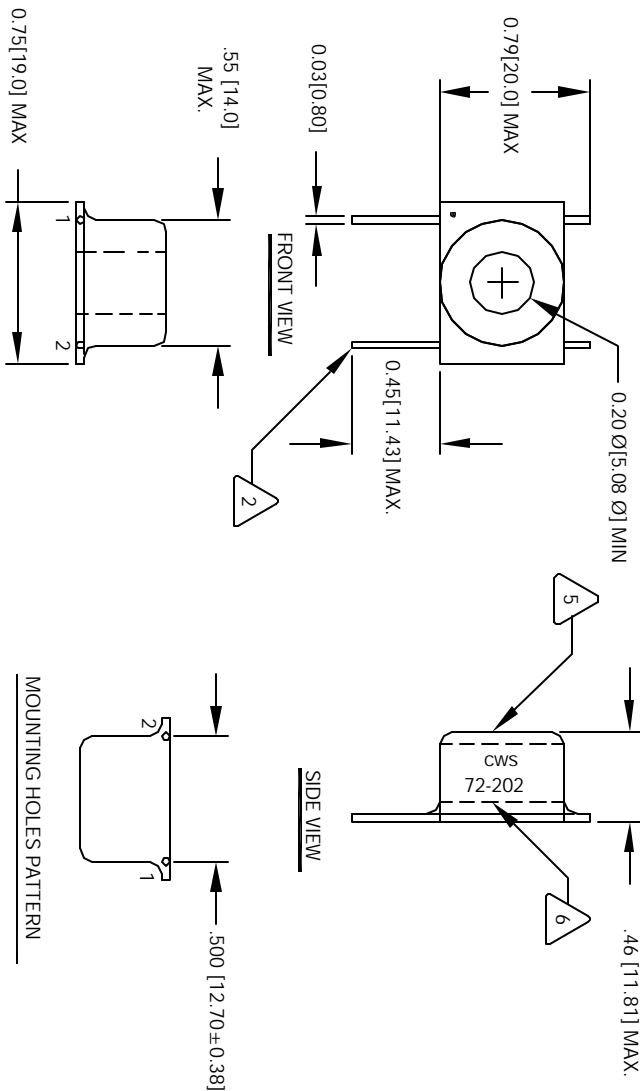
OPERATING TEMP. = - 25 °C TO 125 °C

The information contained in this drawing is the sole property of CWS Coil Winding Specialist, Inc. Any reproduction in part or whole without written permission of CWS Coil Winding Specialist, Inc. is prohibited.

REVISION HISTORY			
REV	ECN	DESCRIPTION	SIGN & DATE
A		PRODUCTION RELEASE	BR DATE 5/20/04 JLUU CHK 5/29/04



SCHEMATIC



- 6 WHERE SHOWN  
MARK PART NUMBER AND REVISION
- 5 REMOVE INSULATION, SOLDERED TO LEADS
- 4 CONSTRUCTION: ENCAPSULATED USING BOBBIN.  
FREQUENCY RANGE 20 KHZ TO 200 KHZ  
OPERATING TEMP. = - 25 °C TO 125 °C  
HI-POT PRIMARY TO SECONDARY = 2500 Vrms  
ONE TURN PRIMARY PEAK SENSE CURRENT = 20 A  
PRIMARY BIPOLAR = 600 AMPS-USEC RATING MAX  
PRIMARY UNIPOLAR = 300 AMPS-USEC RATING MAX  
SECONDARY RATED TERMINATING RESISTANCE = 100 OHMS NOM.  
SECONDARY DCR = 1.4 OHMS MAX  
SECONDARY INDUCTANCE TEST VOLTAGE @ 15.75 KHZ = 1.0 V  
SECONDARY INDUCTANCE = 20.0 mH MIN  
SECONDARY TURNS = 100  
SPECIFICATIONS @ 25 °C :
- 3 WIRE: UL RECOGNIZED 130 °C RATED MAGNET WIRE  
CWS BYTEMARK OR OTHER APPROVED PART  
CORE: FERRITE TOROID
- 2 BOBBIN RATING CLASS B (130 °C) REQUIRED  
MATERIAL: UL RECOGNIZED 94V-0 FOR FLAMMABILITY

NOTES: UNLESS OTHERWISE SPECIFIED, CURRENT SENSOR.

UNLESS OTHERWISE SPECIFIED  
DIMENSIONING AND TOLERANCE PER ANSI Y14.5M  
ALL DIMENSIONS ARE IN INCHES AND [DIMENSIONS]  
TOLERANCE ANGLES  
UNLESS OTHERWISE SPECIFIED  
TOLERANCE ANGLES  
TOLERANCE METRICS  
UNLESS OTHERWISE SPECIFIED  
ANGLE PRECEDENCE

QTY	CODE IDENT	MFG. P/N	DESCRIPTION	ITEM NO.
			<b>PARTS LIST</b>	
			<b>COILS.COM, INC</b>	
			1510 E. Eslinger Ave Unit B, Spring Ave, CA, 92705	
			CWS Coil Winding Specialist.	
			<b>Current Sense Inductors</b>	
			SIZE: DIM. INCH. <b>B</b>	REV <b>A</b>
			SCALE: <b>2=1</b>	SHEET <b>1</b> OF <b>1</b>