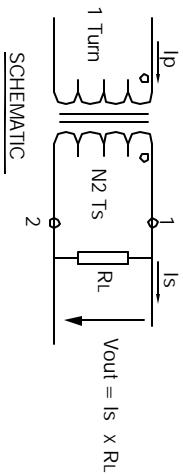


The information contained in this drawing is the sole property of CWS Coil Winding Specialist. Any reproduction in part or whole without written permission of CWS Coil Winding Specialist is prohibited.



Note: All measurements are carried out using rms value responding meter. Unless requested the terminating resistor and the 1-turn primary are not supplied.

WHERE SHOWN
 6 MARK PART NUMBER AND REVISION

5 REMOVE INSULATION, SOLDERED TO LEADS

4 CONSTRUCTION: ENCAPSULATED USING BOBBIN.

- OPERATING TEMP. = -25 °C TO 125 °C
- OUTPUT VOLTAGE AT RL AND MAX (In) = 0.8 V RMS
- BURDEN RESISTOR (RL) = 100 OHMS
- DC RESISTANCE @ 25 °C = 180 OHMS MAX
- MAX AMPLITUDE ERROR WITHIN RANGE OF (In) = ± 0.5%
- MAX PHASE ERROR WITHIN RANGE OF (In) = ± 30'
- = 60 AMPS RMS MAX.
- MAX AC PRIMARY CURRENT WITHOUT SATURATION (I max.) = 0.25 TO 20 AMPS RMS NOMINAL.
- PRIMARY CURRENT RANGE WITH DEFINED ERROR TOLERANCES (In), SPECIFICATIONS @ 25 °C :

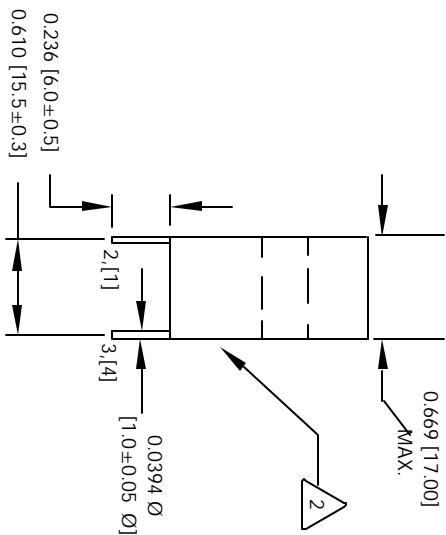
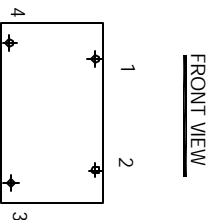
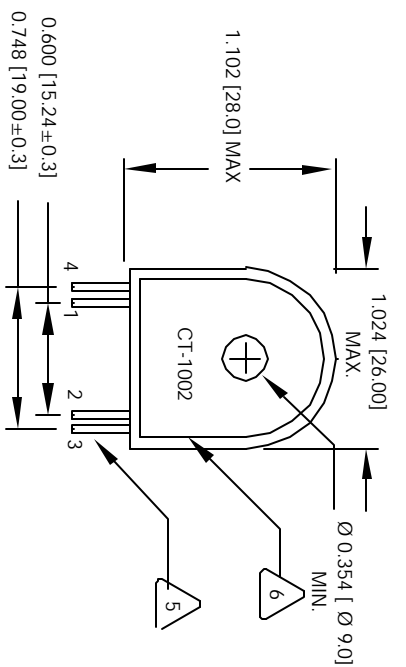
2 CORE: TAPE WOUND

- 1 BOBBIN RATING CLASS B (130 °C) REQUIRED
- MATERIAL: UL RECOGNIZED 94V-0 FOR FLAMMABILITY
- UNIT : INCHES [MM]

EP FORM0005 REV 3 10/01

REVISION HISTORY

REV	ECN	DESCRIPTION	DATE	BY	CHK	DATE
B		PRODUCTION RELEASE	8/10/04	RRR	JLU	8/10/04



Note: Pin 3 and 4 are only used for mechanical mounting on to PCB

UNLESS OTHERWISE SPECIFIED	
DRAWING AND TOLERANCE PER ANSI Y14.5M	
ALL DIMENSIONS ARE IN INCHES AND (MULTIPLIED)	
TOLERANCE ANGLES	± 4.0° 30'
AXES ± 0.10 .X± 1.025 TOLERANCE METRICES	± 0.254 .X± 0.31
ANGLE PROJECTION	1
DO NOT SCALE DRAWING	

QTY	CODE IDENT	MFG. P/N	DESCRIPTION	ITEM NO.
			PARTS LIST	
	AUTOCAD SOLIDWORKS SIGN	X	CWS Coil Winding Specialist.	
	DATE	8/10/04	1510 E. Edinger Ave.	
			Unit. B. Santa Ana, CA. 92705	
TITLE:		50/60 Hz Current Sense Transformer (AC)		
SIZE DIM. ML		CT-1002-ST	REV B	
SCALE		2=1	SHEET 1 OF 1	

CAD-FILE: