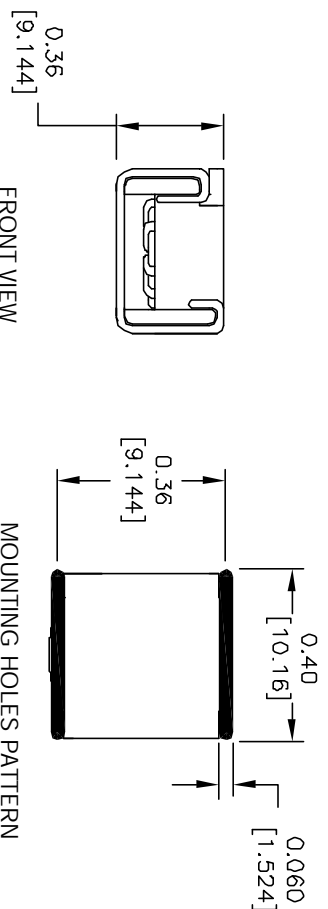
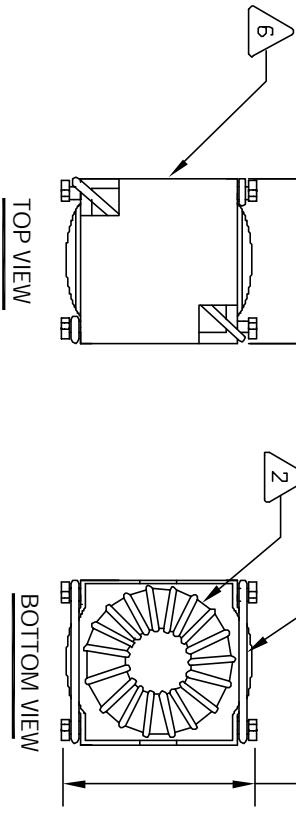
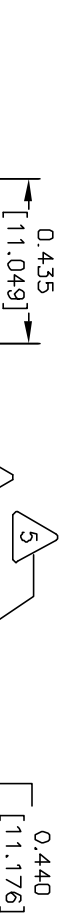
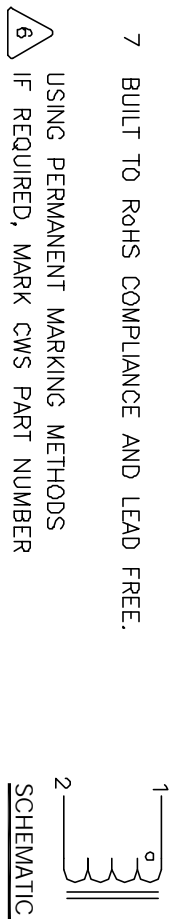


This information contained in this drawing is the sole property of CWS Coil Winding Specialists. Any reproduction in part or whole without written permission of CWS Coil Winding Specialists is prohibited.

REVISION HISTORY

REV	ECN	DESCRIPTION	BY	DATE	SIGN & DATE
B		PRODUCTION RELEASE	TDK	10/20/07	TDK 10/20/07



- 7 BUILT TO ROHS COMPLIANCE AND LEAD FREE.
- 6 IF REQUIRED, MARK CWS PART NUMBER
- 5 LEADS MUST BE CO-PLANAR WITH FLAT SURFACE REMOVE INSULATION, TIN LEADS SECTION THAT WRAP AROUND BOBBIN
- 4 WIND COILS EVENLY SPACED
- 3 CONSTRUCTION:

- HI-POT TEST FOR WINDING TO CORE ISOLATION = 500 VDC MIN
- SRF = 30.0 MHZ MIN.
- CURRENT RATING = 1.33 AMPS, 40 °C TEMP. RISE, NO AIR FLOW
- DCR = 145.0 MILLI-OHMS
- DC BIAS OF 0.9 AMPS, INDUCTANCE = 20.0 UH
- L = 25 UH ± 10 % @ LOW DC BIAS, 1 KHZ; 250 mV
- 3 SPECIFICATIONS:

- 2 WIRE: UL RECOGNIZED 155°C RATED MAGNET WIRE CWS BYTEMARK OR OTHER APPROVED PART
- 1 CORE: COATED HIGH FLUX TOROID

RATING CLASS B (130°C MIN.) REQUIRED
 MATERIAL: UL RECOGNIZED 94V-0 FLAMMABILITY
 NOTES: SURFACE MOUNT INDUCTOR
 READ FROM BOTTOM UP.

EP FORM0005 REV 3 10/01

CODE	IDENT	MFG. P/N	DESCRIPTION	ITEM NO.
AUTOCAD	X		PARTS LIST	
SOLIDWORKS	SIGN	DATE		
DRAWN	RPR	10/20/07		
CHKD	TDK	10/20/07		
ENGR	JLAU	10/21/07		
APPR	JLAU	10/20/07		

UNLESS OTHERWISE SPECIFIED		DIMENSIONING AND TOLERANCE PER ANSI Y14.3M	
ALL DIMENSIONS ARE IN INCHES AND [MILLIMETERS]		TOLERANCE INCHES: .XX ± .010	
TOLERANCE METRICS: .XX ± .010		ANGLE PROJECTION	
.XX ± .127		DO NOT SCALE DRAWING	

SIZE	ENG. NO.	REV
B	SHF078-250M-2.2A	B
SCALE	1 = 1	SHEET 1 OF 1

CAD-FILE: