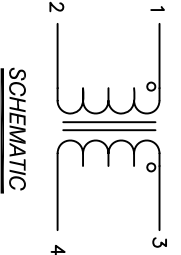
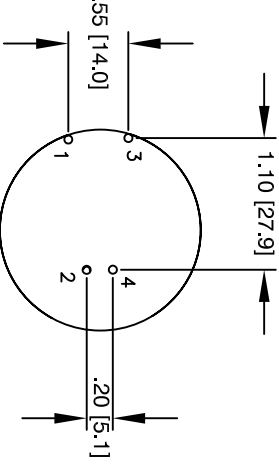
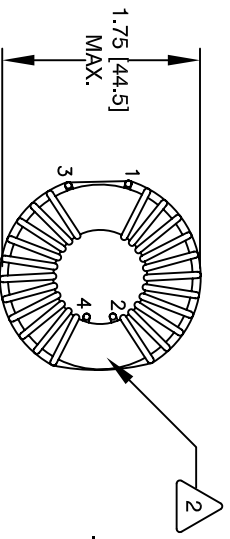
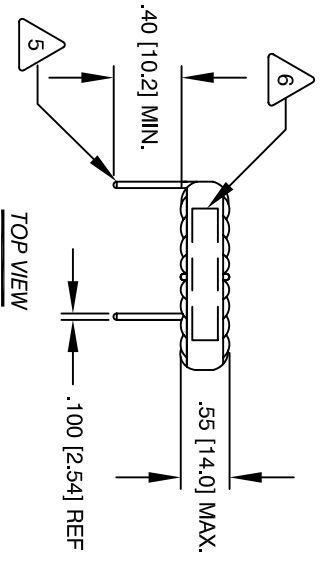


The information contained in this drawing is the sole property of CWS Coil Winding Specialist. Any reproduction in part or whole without written permission of CWS Coil Winding Specialist is prohibited.

REVISION HISTORY						
REV	ECN	DESCRIPTION	BY	DATE	CHK	DATE
C		PRODUCTION RELEASE	TKK	1/20/05	JLJU	1/20/05



- 6 WHERE SHOWN, USING A PERMANENT MARKING METHOD MARK PART NUMBER AND REVISION IN APPROX WRAP INDUCTOR WITH TAPE, (PER NOTE 2)
- TO THE CORE MUST REST FLAT ON PCB, LEADS MUST BE TANGENT FLUSH WITH THE COIL EDGE, AS SHOWN (I.E. COIL REMOVE INSULATION AND TIN LEADS APPROX. 0.40 INCH
- 5 CORE AND EVENLY SPACED, NOTE POLARITY WIND SINGLE LAYER ON EACH SIDE TO CONSTRUCTION:
- 4 TO INSURE INTEGRITY OF WINDING SEPARATION HI-POT TEST FOR INTERWINDING ISOLATION =250VDC POWER LOSS = 6.4 W MAX.@ 40A/COIL DCR = 2.2 MOHMS MAX./COIL, MEASURED USING QUADTECH 2200 L = 260 uH MIN/COIL, 350 uH NOM/COIL, (1KHZ, 1Vrms) SPECIFICATIONS @ 25 °C :
- 3 APPROVED PART OUTER WRAP: 3M #11 OR #69 OR OTHER CWS WIRE: UL RECOGNIZED 155°C OR 200°C RATING MAGNET WIRE CWS BYTEMARK OR OTHER APPROVED PART CORE: COATED FERRITE TOROID, HIGH PERM MNZN
- 2 CLASS B (130°C) REQUIRED MATERIAL: UL RECOGNIZED 94V-0 FOR FLAMMABILITY
- 1



NOTES: UNLESS OTHERWISE SPECIFIED, READ FROM BOTTOM UP.  
CAGE CODE = 5DME2

QTY	CODE IDENT	MFG. P/N	DESCRIPTION	ITEM NO.
			<b>PARTS LIST</b>	
			sales@coilws.com	
			www.coilws.com	
			Coil Winding Specialist, Inc.	
			353 W. Grove Ave	
			Orange, CA 92865	
			<b>TITLE:</b>	
			Inductor Common Mode	
			350uH 40A	
			SIZE (Dwg. No.)	
			C-36A29-01	
			SCALE	
			NOT TO SCALE	
			SHEET 1 OF 1	