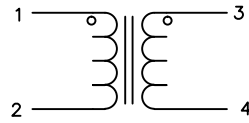


The information contained in this drawing is the sole property of CWS Coil Winding Specialist. Any reproduction in part or whole without written permission of CWS Coil Winding Specialist is prohibited.



SCHEMATIC

REVISION HISTORY						
REV	ECN	DESCRIPTION	SIGN & DATE			
			BY	DATE	CHK	DATE
A		PRODUCTION RELEASE	RPR	1/05/05	JLAU	1/05/05
B		UPDATED	RCL	7/5/11	JLAU	7/5/11

6 WHERE SHOWN, USING A PERMANENT MARKING METHOD MARK PART NUMBER AND REVISION WRAP INDUCTOR WITH TAPE, (PER NOTE 2)

5 TO THE CORE MUST REST FLAT ON PCB). LEADS MUST BE TANGENT FLUSH WITH THE COIL EDGE, AS SHOWN (I.E. COIL REMOVE INSULATION AND TIN LEADS APPROX. 0.40 INCH

4 CORE, EVENLY SPACED AND NOTE POLARITY. WIND SINGLE LAYER ON EACH SIDE OF CONSTRUCTION:

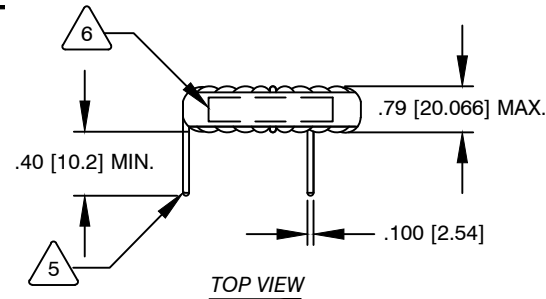
TO INSURE INTERGRITY OF WINDING SEPARATION HI-POT TEST FOR INTERWINDING ISOLATION = 250VDC

EFFECTIVE FOR FILTERING NOISE IN 300 KHZ AND BELOW DCR= 9 MILLI-OHMS MAX COMBINED (BOTH COILS) L= 2.0 mH MIN / COIL; 2.6 mH NOM / COIL, 1 KHz, 1 Vrms SPECIFICATIONS @ 25 °C :

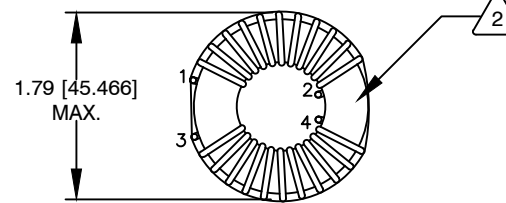
2 WIRE: UL RECOGNIZED 200°C RATED MAGNET WIRE CWS BYTEMARK OR OTHER APPROVED PART CORE: COATED FERRITE TOROID, VERY HIGH PERM MNZN

1 MATERIAL: UL RECOGNIZED 94V-0 FOR FLAMMABILITY

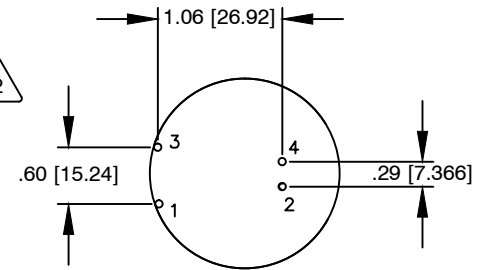
NOTES: UNLESS OTHERWISE SPECIFIED. READ FROM BOTTOM UP. CAGE CODE = 5DME2



TOP VIEW



BOTTOM VIEW



MOUNTING HOLES PATTERN

QTY	CODE IDENT	MFG. P/N	DESCRIPTION	ITEM NO.
PARTS LIST				
AUTOCAD	X			
SOLIDWORKS				
SIGN	DATE	COILWS COM, INC	CWS Coil Winding Specialist.	
		www.coilws.com	1510 E. Edinger Ave. Unit B, Santa Ana, CA. 92705	
DRAWN	RPR	1/05/05	TITLE: Low Freq. Common Mode Inductor 2.6 mH (Nom), 10 Amps	
CHECKED	JLAU	1/05/05		
ENGR.	KSUM	1/05/05		
APPR.	JLAU	1/05/05	SIZE	DWG. NO.
			B	C-36A29-02
			SCALE	REV
			1=1	B
			SHEET 1 OF 1	

UNLESS OTHERWISE SPECIFIED	
DIMENSIONING AND TOLERANCE PER ANSI Y14.5M	
ALL DIMENSIONS ARE IN INCHES AND [MILLIMETERS].	
TOLERANCE INCHES: .XXX=±.010 .XX=±.020 \angle=±0°30'	
TOLERANCE METRICS: .XXX=±.254 .XX=±.51 \angle=±0°30'	
ANGLE PROJECTION	
DO NOT SCALE DRAWING	