

The information contained in this drawing is the sole property of CMS Coil Winding Specialist. Any reproduction in part or whole without written permission of CMS Coil Winding Specialist is prohibited.

8 BUILT TO ROHS COMPLIANCE AND LEAD FREE

7 BOTTOM OF CORE TO START OF TINNING  
5.08 MM DIMENSION MEASURED FROM

6 WHERE SHOWN, USING A PERMANENT MARKING METHOD  
MARK PART NUMBER AND REVISION IN APPROX  
WRAP INDUCTOR WITH TAPE, (PER NOTE 2)

5 TO THE CORE  
MUST REST FLAT ON PCB. LEADS MUST BE TANGENT  
FLUSH WITH THE COIL EDGE, AS SHOWN (I.E. COIL  
REMOVE INSULATION AND TIN LEADS APPROX. 0.2 INCH

4 CORE AND EVENLY SPACED  
WIND 5 TURNS, .064x .162 RECT. SINGLE LAYER ON EACH SIDE OF  
CONSTRUCTION:

3 TO INSURE INTEGRITY OF WINDING SEPARATION  
HI-POT TEST FOR INTERWINDING ISOLATION = 250VDC  
POWER LOSS = 4.3 W MAX. @ 60A/COIL  
DCR = 0.6 MOHMS MAX./COIL, MEASURED USING QUADTECH 2200  
L = 82.5 uH MIN/COIL, 110 uH NOM/COIL (1 KHZ, 1Vrms)  
SPECIFICATIONS @ 25 °C :

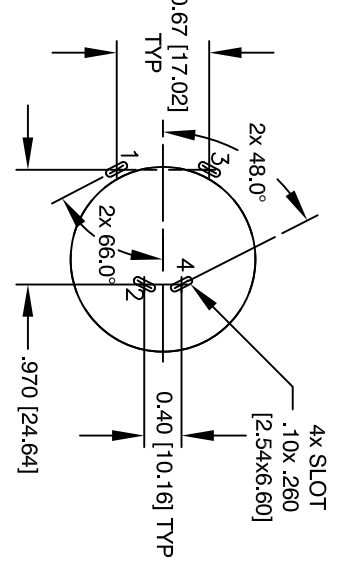
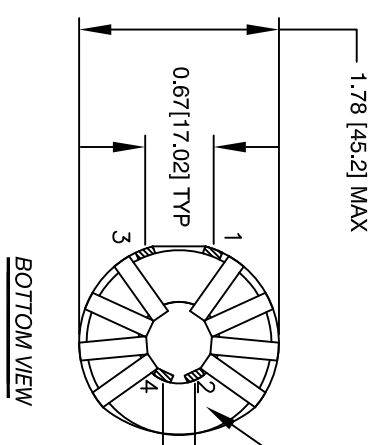
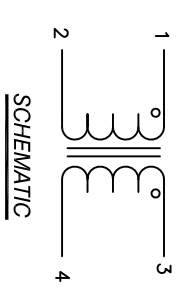
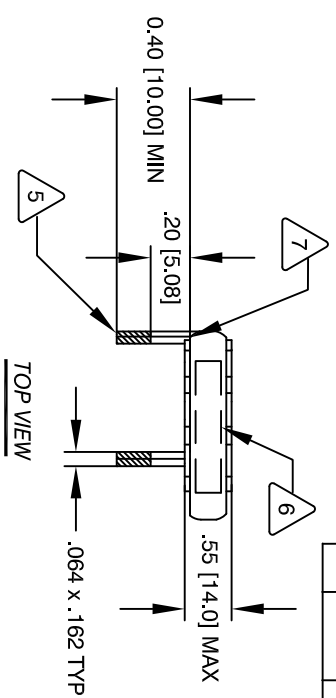
2 APPROVED PART  
OUTER WRAP: 3M #11 OR #69 OR OTHER CWS  
WIRE: UL RECOGNIZED CLASS 200°C RATED MAGNET WIRE  
CWS BYTEMARK OR OTHER APPROVED PART  
CORE: COATED FERRITE TOROID, HIGH PERM MNZN

1 CLASS H (200°C) REQUIRED  
MATERIAL: UL RECOGNIZED 94V-0 FOR FLAMMABILITY

ANY TOLERANCE, THIS DIM. CAN VARY A LITTLE FROM PART TO PART.  
"TYP" IN DIM. TOL. REFERS TO A NON-CRITICAL TYPICAL (AVERAGE) DIM. WITHOUT

NOTES: UNLESS OTHERWISE SPECIFIED, READ NOTES FROM BOTTOM TO UP.  
CAGE CODE: 5DME2

REVISION HISTORY		SIGN & DATE				
REV	ECN	DESCRIPTION	BY	DATE	CHK	DATE
F2		UPDATED DIMENSION	TN	03/17/21	JL	03/17/21
G		UPDATED DIMENSION & SPEC.	TN	04/16/21	JL	04/16/21



QTY	CODE IDENT	MFG. P/N	DESCRIPTION	ITEM NO.
			<b>PARTS LIST</b>	
	AUTOCAD SOLIDWORKS			
	SIGN	DATE		
	DRWN	DATE		
	CHKD	DATE		
	ENGR	DATE		
	APPR	DATE		

UNLESS OTHERWISE SPECIFIED	
DIMENSIONING AND TOLERANCE PER ANSI Y14.5M AND [MILLIMETERS]	
TOLERANCE INCHES:	∅ = ±0.30
TOLERANCE METRICS:	∅ = ±0.30
ANGLE PROJECTION	1st ANGLE
DO NOT SCALE DRAWING	

TITLE:		COILS COM, INC	
CAGE CODE: 5DME2		CWS Coil Winding Specialist	
CAGE CODE: 5DME2		353 W. GROVE AVE.	
CAGE CODE: 5DME2		ORANGE, CA 92865	
CAGE CODE: 5DME2		INDUCTOR COMMON MODE	
CAGE CODE: 5DME2		110uH 60A	
SIZE	DWG. NO.	REV	
B	C-36A29-07	G	
SCALE	1=1	SHEET	1 OF 1