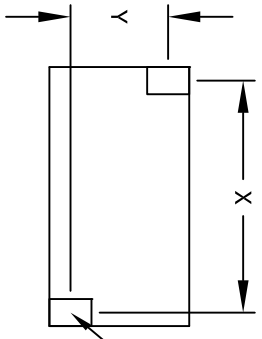
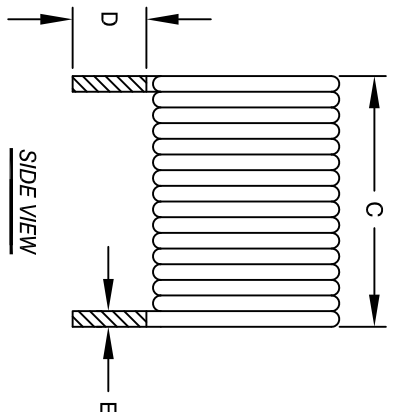
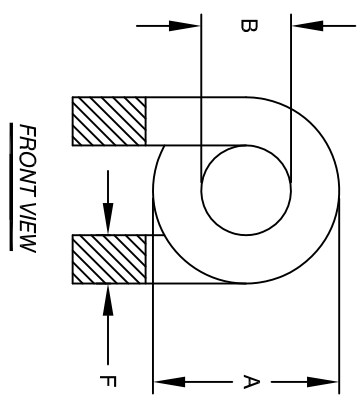


The information contained in this drawing is the sole property of CWS Coil Winding Specialist. Any reproduction in part or whole without written permission of CWS Coil Winding Specialist is prohibited.

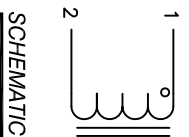


DIMENSIONAL TOLERANCES INCHES (MM)									
A	B	C	D	E	F	X	Y		
MAX 1.14 [29.00]	MIN 0.59 [15.00]	MAX 1.26 [32.00]	MIN 0.50 [12.70]	REF 0.063 [1.60]	REF 0.268 [6.80]	REF 1.197 [30.40]	REF 0.874 [22.20]		

REVISION HISTORY			
REV	ECN	DESCRIPTION	SIGN & DATE
			BY DATE CHK DATE
A		PRODUCTION RELEASE	JL 4/24/17 JLU 4/24/17
B		SPEC. CORRECTION	TN 9/11/17 JLU 9/11/17



0.072x0.308
[1.84x7.82]



- BUILT TO ROHS COMPLIANCE.
- IF APPLICABLE, LABEL PART NUMBER AND REVISION
- POSITION LEADS AS REQUIRED
REMOVE WIRE INSULATION AND TIN
WIND COILS EVENLY SPACED
CONSTRUCTION:
- DCR = 1.90 MILLI-OHMS MAX
SRF > 10MHZ
MAX TEMP. RISE @ IDC 90 AMP, LESS THAN 25°C WITH NO AIRFLOW
INDUCTANCE = 2uH TYP.
TEST FREQUENCY: 1.0 KHZ ; TEST VOLTAGE: 250mV
RATED MAX. CURRENT = 90 AMPS RMS
OPERATING TEMPERATURE RANGE : -40° TO 180°C
SPECIFICATIONS @ 25°C
- WIRE: UL RATED CLASS 200°C
CORE: AIR
- RATING: UL-CLASS H (180°C) REQUIRED
MATERIAL: UL RECOGNIZED FLAMMABILITY

NOTES: UNLESS OTHERWISE SPECIFIED. READ NOTES FROM BOTTOM TO UP.

UNLESS OTHERWISE SPECIFIED	
DIMENSIONING AND TOLERANCE PER ANSI Y14.5M AND [MILLIMETERS].	
TOLERANCE INCHES: .XXX=±.005 XX=±.015 X=±.030	ANGLE PROJECTION
TOLERANCE METRICS: .XXX=±.127 XX=±.38 X=±.98	DO NOT SCALE DRAWING

CODE IDENT	MFG. P/N	DESCRIPTION	ITEM NO.
PARTS LIST			
AUTOCAD SOLIDWORKS SIGN	X		
DATE	DATE		
JL 4/24/17	JL 4/24/17		
AM 4/24/17	AM 4/24/17		
JL 4/24/17	JL 4/24/17		
TITLE:		CWS Coil Winding Specialist.	
DRAWN: JL		353 West Grove Ave.	
CHKD: JL		Orange, CA 92865	
ENGR: AM			
APPR: JL			
SIZE DWG. NO.		HELIICAL COIL,	
SCALE		2 UH AIR COIL, 90 AMPS	
B		CAC-020M-90AH	
N/A		REV B	
SHEET 1 OF 1			