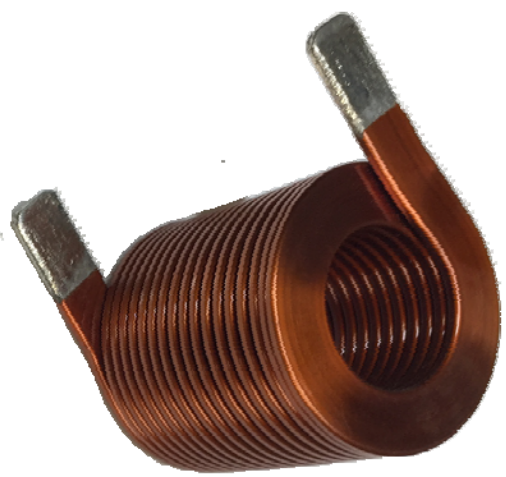
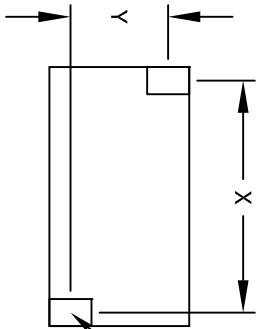
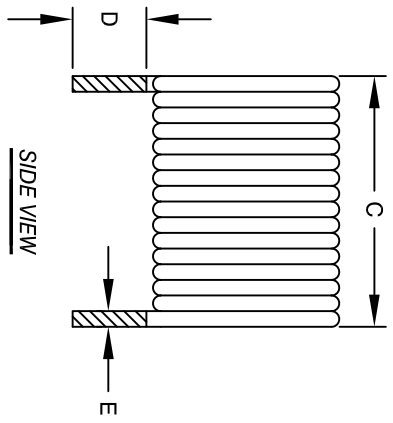
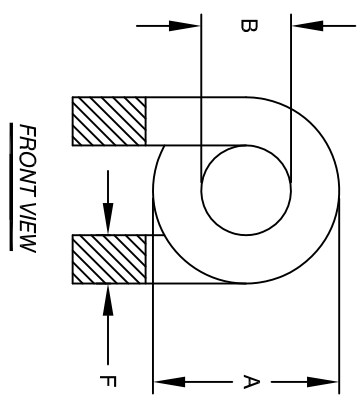


The information contained in this drawing is the sole property of CMS Coil Winding Specialist. Any reproduction in part or whole without written permission of CMS Coil Winding Specialist is prohibited.

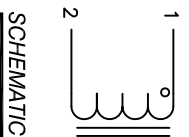


| DIMENSIONAL TOLERANCES INCHES (MM) | | | | | | | | | |
|------------------------------------|------------------|------------------|------------------|------------------|-----------------|------------------|-------------------|--|--|
| A | B | C | D | E | F | X | Y | | |
| MAX | MIN | MAX | MIN | REF | REF | REF | REF | | |
| 1.31 [33.300] | 0.71 [18.000] | 1.28 [32.500] | 0.50 [12.700] | 0.059 [1.500] | 0.30 [7.500] | 1.22 [30.000] | 0.886 [22.500] | | |

| REVISION HISTORY | | | | | | |
|------------------|-----|--------------------|-------------|---------|-----|---------|
| REV | ECN | DESCRIPTION | SIGN & DATE | | | |
| | | | BY | DATE | CHK | DATE |
| A | | PRODUCTION RELEASE | JL | 4/24/17 | JLU | 4/24/17 |
| B | | SPEC. CORRECTION | TN | 8/22/17 | JLU | 8/22/17 |



0.068x0.340
[1.725x8.625]



- 6 BUILT TO ROHS COMPLIANCE.
- 5 IF APPLICABLE, LABEL PART NUMBER AND REVISION POSITION LEADS AS REQUIRED REMOVE WIRE INSULATION AND TIN WIND COILS EVENLY SPACED
- 4 CONSTRUCTION:
DCR = 2.4 MILLI-OHMS MAX
SRF > 10MHZ
MAX TEMP. RISE @ IDC 90 AMP, LESS THAN 25°C WITH NO AIRFLOW
INDUCTANCE = 3uH TYP.
TEST FREQUENCY: 1.0 KHZ ; TEST VOLTAGE: 250mv
RATED MAX. CURRENT = 90 AMPS RMS
OPERATING TEMPERATURE RANGE : -40° TO 180°C
SPECIFICATIONS @ 25°C
- 3 WIRE: UL RATED CLASS 200°C
CORE: AIR
- 2 RATING: UL-CLASS H (180°C) REQUIRED
MATERIAL: UL RECOGNIZED FLAMMABILITY
- 1 NOTES: UNLESS OTHERWISE SPECIFIED, READ NOTES FROM BOTTOM TO UP.

| | |
|---|----------------------|
| UNLESS OTHERWISE SPECIFIED | |
| DIMENSIONING AND TOLERANCE PER ANSI Y14.5M AND [MILLIMETERS]. | |
| TOLERANCE INCHES: | ∅ = ±0.30 |
| .XXX = ±.005 XX = ±.015 | X = ±.030 |
| .XX = ±.127 X = ±.38 | |
| ANGLE PROJECTION | DO NOT SCALE DRAWING |

| | | | |
|-------------------------|----------|---|--------------|
| CODE IDENT | MFG. P/N | DESCRIPTION | ITEM NO. |
| PARTS LIST | | | |
| AUTOCAD SOLIDWORKS SIGN | DATE | TITLE: | |
| JL | 4/24/17 | HELICAL COIL, 3 UH AIR COIL, 90 AMPS | |
| ENGR. AM | 4/24/17 | CAC-030M-90AH | REV B |
| APPR. JL | 4/24/17 | SCALE: N/A | SHEET 1 OF 1 |
| DRAWN: JL | | CWS Coil Winding Specialist, 353 West Grove Ave. Orange, CA 92865 | |
| CHECKED: JL | | | |
| DATE: 4/24/17 | | | |