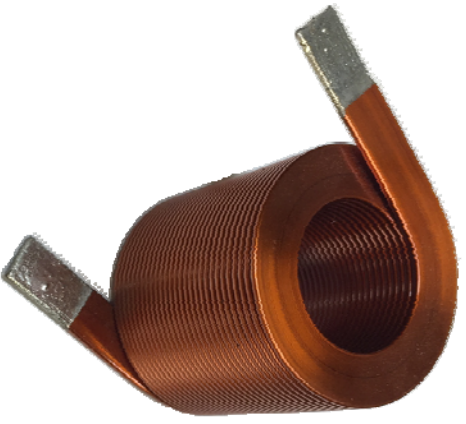


The information contained in this drawing is the sole property of CMS Coil Winding Specialist. Any reproduction in part or whole without written permission of CMS Coil Winding Specialist is prohibited.

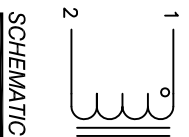
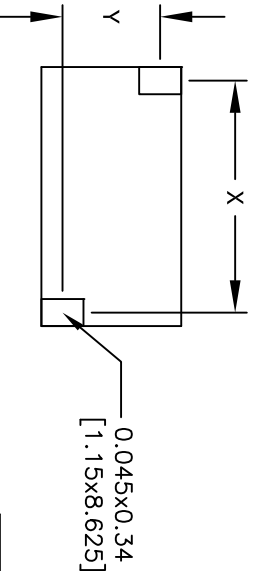
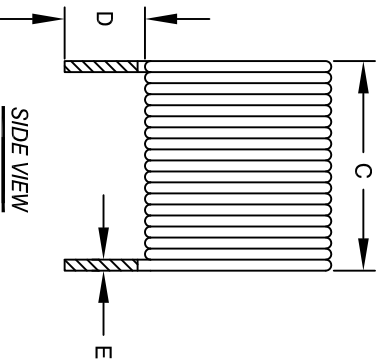
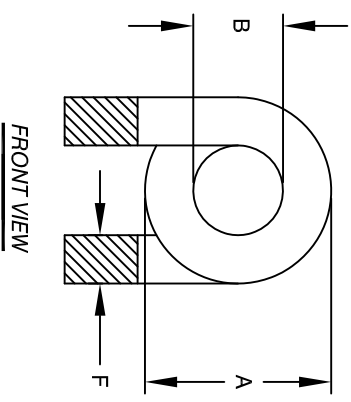


DIMENSIONAL TOLERANCES INCHES (MM)

A	B	C	D	E	F	X	Y
MAX 1.41 [36.00]	MIN 0.787 [20.00]	MAX 1.41 [36.00]	MIN 0.50 [12.70]	REF 0.039 [1.00]	REF 0.295 [7.50]	REF 1.378 [35.00]	REF 1.14 [29.00]

REVISION HISTORY

REV	ECN	DESCRIPTION	SIGN & DATE			
			BY	DATE	CHK	DATE
A		PRODUCTION RELEASE	JL	4/24/17	JLU	4/24/17
B		SPEC. CORRECTION	TN	8/22/17	JLU	8/22/17



- 6 BUILT TO ROHS COMPLIANCE.
- 5 IF APPLICABLE, LABEL PART NUMBER AND REVISION POSITION LEADS AS REQUIRED REMOVE WIRE INSULATION AND TIN WIND COILS EVENLY SPACED
- 4 CONSTRUCTION:
DCR = 6.0 MILLI-OHMS MAX
SRF > 10MHZ
MAX TEMP. RISE @ IDC 60 AMP, LESS THAN 25°C WITH NO AIRFLOW
INDUCTANCE = 9uH TYP.
TEST FREQUENCY: 1.0 KHZ ; TEST VOLTAGE: 250mV
RATED MAX. CURRENT = 60 AMPS RMS
OPERATING TEMPERATURE RANGE : -40° TO 180°C
SPECIFICATIONS @ 25°C
- 3 WIRE: UL RATED CLASS 200°C
CORE: AIR
- 2 RATING: UL-CLASS H (180°C) REQUIRED
MATERIAL: UL RECOGNIZED FLAMMABILITY
- 1 NOTES: UNLESS OTHERWISE SPECIFIED, READ NOTES FROM BOTTOM TO UP.

UNLESS OTHERWISE SPECIFIED

DIMENSIONING AND TOLERANCE PER ANSI Y14.5M AND [MILLIMETERS].	ANGLE PROJECTION
TOLERANCE INCHES: XXX=±.005 XX=±.015 X=±.030	DO NOT SCALE DRAWING
TOLERANCE METRICS: XX=±.127 X=±.38	

CODE IDENT	MFG. P/N	DESCRIPTION	ITEM NO.
AUTOCAD SOLIDWORKS SIGN	X	PARTS LIST	
DATE	DATE	TITLE:	
4/24/17	4/24/17	COILS COM, INC	CWS Coil Winding Specialist.
4/24/17	4/24/17	www.coils.com	353 West Grove Ave. Orange, CA 92865
4/24/17	4/24/17	DRWN: JL	
4/24/17	4/24/17	CHKD: JL	
4/24/17	4/24/17	ENGR: AM	
4/24/17	4/24/17	APPR: JL	
SIZE	DWG. NO.	TITLE:	REV
B	CAC-090M-60AH	HELICAL COIL, 9 UH AIR COIL, 60 AMPS	B
SCALE	N/A		
SHEET	1	OF	1