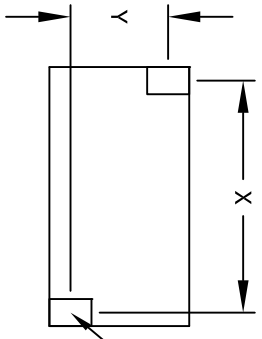
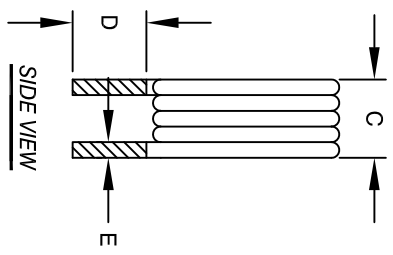
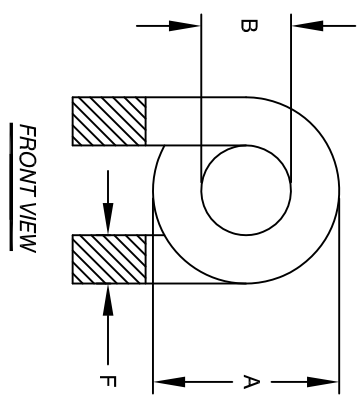


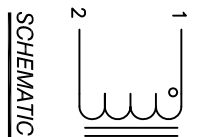
The information contained in this drawing is the sole property of CWS Coil Winding Specialist. Any reproduction in part or whole without written permission of CWS Coil Winding Specialist is prohibited.



DIMENSIONAL TOLERANCES INCHES (MM)									
A	B	C	D	E	F	X	Y		
MAX	MAX	MAX	MIN	REF	REF	REF	REF		
1.417 [36.00]	0.787 [20.00]	0.689 [17.50]	0.50 [12.70]	0.10 [2.60]	0.30 [7.60]		0.5896 [14.90]	1.118 [28.40]	



0.1177x0.344
[2.99x8.74]



- BUILT TO ROHS COMPLIANCE.
- IF APPLICABLE, LABEL PART NUMBER AND REVISION
- POSITION LEADS AS REQUIRED
REMOVE WIRE INSULATION AND TIN
WIND COILS EVENLY SPACED
CONSTRUCTION:
- DCR = 1mΩ MAX
SRF > 10MHz
MAX TEMP. RISE @ IDC 160 AMP, LESS THAN 25°C WITH NO AIRFLOW
INDUCTANCE = 0.5uH TYP.
TEST FREQUENCY: 1.0 KHz ; TEST VOLTAGE: 250mV
RATED MAX. CURRENT = 160 AMPS RMS
OPERATING TEMPERATURE RANGE : -40° TO 180°C
SPECIFICATIONS @ 25°C
- WIRE: UL RATED CLASS 200°C
CORE: AIR
- RATING: UL-CLASS H (180°C) REQUIRED
MATERIAL: UL RECOGNIZED FLAMMABILITY

NOTES: UNLESS OTHERWISE SPECIFIED, READ NOTES FROM BOTTOM TO UP.

REVISION HISTORY		SIGN & DATE				
REV	ECN	DESCRIPTION	BY	DATE	CHK	DATE
A		PRODUCTION RELEASE	JL	4/24/17	JLU	4/24/17

CODE IDENT	MFG. P/N	DESCRIPTION	ITEM NO.
AUTOCAD SOLIDWORKS	X	COILS COM, INC CWS Coil Winding Specialist. 353 West Grove Ave. Orange, CA 92865	
DRAWN	DATE	TITLE:	
JL	4/24/17	HELICAL COIL, 0.5 UH AIR COIL, 160 AMPS	
CHKD	DATE	SIZE Dwg. No.	
JL	4/24/17	B	
ENGR.	DATE	SCALE	
AM	4/24/17	N/A	
APPR.	DATE		
JL	4/24/17		