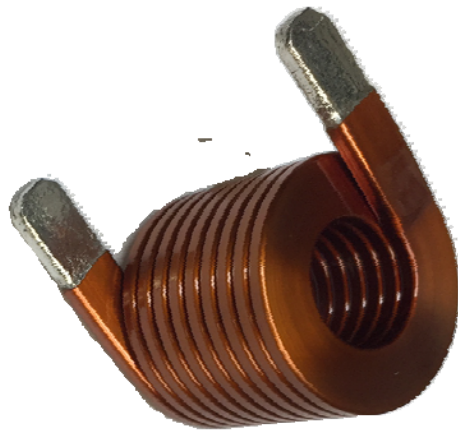
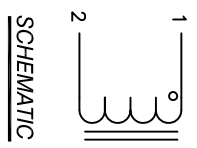
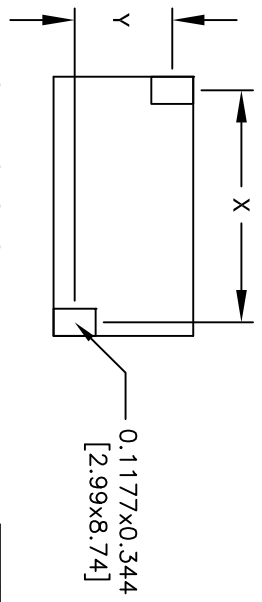
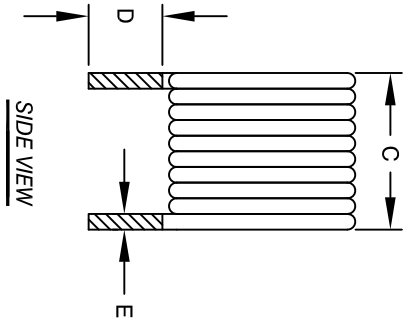
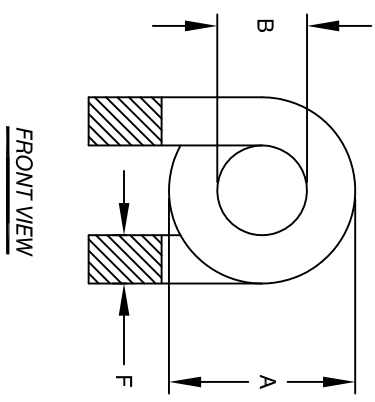


The information contained in this drawing is the sole property of CMS Coil Winding Specialist. Any reproduction in part or whole without written permission of CMS Coil Winding Specialist is prohibited.



DIMENSIONAL TOLERANCES INCHES (MM)									
A	B	C	D	E	F	X	Y		
MAX	MIN	MAX	MIN	REF	REF	REF	REF		
1.19 [30.20]	0.57 [14.50]	1.16 [29.50]	0.50 [12.70]	0.10 [2.60]	0.30 [7.60]	1.06 [26.90]	0.83 [21.00]		

REVISION HISTORY		SIGN & DATE				
REV	ECN	DESCRIPTION	BY	DATE	CHK	DATE
A		PRODUCTION RELEASE	JL	4/24/17	JLU	4/24/17
B		SPEC. CORRECTION	TN	8/23/17	JLU	8/23/17



- 6 BUILT TO ROHS COMPLIANCE.
- 5 IF APPLICABLE, LABEL PART NUMBER AND REVISION POSITION LEADS AS REQUIRED REMOVE WIRE INSULATION AND TIN WIND COILS EVENLY SPACED
- 4 CONSTRUCTION:
DCR = 0.70 MILLI-OHMS MAX
SRF > 10MHZ
MAX TEMP. RISE @ IDC 160 AMP, LESS THAN 25°C WITH NO AIRFLOW
INDUCTANCE = 0.8uH TYP.
TEST FREQUENCY: 1.0 KHZ ; TEST VOLTAGE: 250mV
RATED MAX. CURRENT = 160 AMPS RMS
OPERATING TEMPERATURE RANGE : -40° TO 180°C
SPECIFICATIONS @ 25°C
- 3 WIRE: UL RATED CLASS 200°C
CORE: AIR
- 2 RATING: UL-CLASS H (180°C) REQUIRED
MATERIAL: UL RECOGNIZED FLAMMABILITY
- 1 NOTES: UNLESS OTHERWISE SPECIFIED, READ NOTES FROM BOTTOM TO UP.

UNLESS OTHERWISE SPECIFIED	
DIMENSIONING AND TOLERANCE PER ANSI Y14.5M AND [MILLIMETERS].	
TOLERANCE INCHES:	± = ±0.30°
.XXX = ±.005 XX = ±.015	
TOLERANCE METRICS:	∠ = ±0.30°
.XXX = ±.127 XX = ±.38	
ANGLE PROJECTION	DO NOT SCALE DRAWING

CODE IDENT	MFG. P/N	DESCRIPTION	ITEM NO.
PARTS LIST			
AUTOCAD SOLIDWORKS SIGN	X		
DATE	4/24/17		
CHKD	JL		
DATE	4/24/17		
ENGR	AM		
DATE	4/24/17		
APPR	JL		
DATE	4/24/17		
TITLE:		HELVICAL COIL, 0.8 UH AIR COIL, 160 AMPS	
DRAWN		CWS Coil Winding Specialist.	
SIGNED		353 West Grove Ave. Orange, CA 92865	
DATE		4/24/17	
SCALE		N/A	
SIZE		Dwg. No. CAC-0R8M-160AH	
REV		B	
SHEET		1 OF 1	