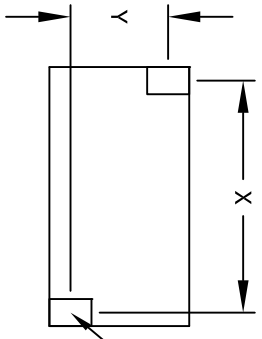
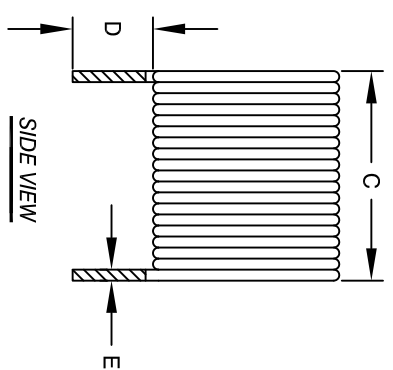
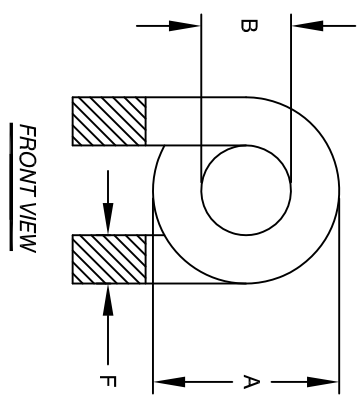


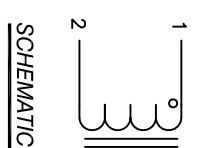
The information contained in this drawing is the sole property of CMS Coil Winding Specialist. Any reproduction in part or whole without written permission of CMS Coil Winding Specialist is prohibited.



DIMENSIONAL TOLERANCES INCHES (MM)									
A	B	C	D	E	F	X	Y		
MAX	MIN	MAX	MIN	REF	REF	REF	REF		
1.06 [27.00]	0.67 [17.20]	1.06 [27.00]	0.50 [12.70]	0.028 [0.70]	0.197 [5.00]	1.035 [26.30]	0.886 [22.00]		



0.0317x0.226
[0.805x5.75]



- 6 BUILT TO ROHS COMPLIANCE.
- 5 IF APPLICABLE, LABEL PART NUMBER AND REVISION POSITION LEADS AS REQUIRED REMOVE WIRE INSULATION AND TIN WIND COILS EVENLY SPACED
- 4 CONSTRUCTION:
DCR = 15.6 MILLI-OHMS MAX
SRF > 10MHZ
MAX TEMP. RISE @ IDC 30 AMP, LESS THAN 25°C WITH NO AIRFLOW
INDUCTANCE = 11uH TYP.
TEST FREQUENCY: 1.0 KHZ ; TEST VOLTAGE: 250mv
RATED MAX. CURRENT = 30 AMPS RMS
OPERATING TEMPERATURE RANGE : -40° TO 180°C
SPECIFICATIONS @ 25°C
- 3 WIRE: UL RATED CLASS 200°C
CORE: AIR
- 2 RATING: UL-CLASS H (180°C) REQUIRED
MATERIAL: UL RECOGNIZED FLAMMABILITY
- 1 NOTES: UNLESS OTHERWISE SPECIFIED. READ NOTES FROM BOTTOM TO UP.

REVISION HISTORY						
REV	ECN	DESCRIPTION	BY	DATE	CHK	DATE
A		PRODUCTION RELEASE	JL	4/24/17	JLU	4/24/17
B		SPEC. CORRECTION	TN	8/23/17	JLU	8/23/17

CODE IDENT	MFG. P/N	DESCRIPTION	ITEM NO.
		PARTS LIST	
AUTOCAD SOLIDWORKS	X		
UNLESS OTHERWISE SPECIFIED			
DRAWING AND TOLERANCE PER ANSI Y14.5M AND [MILLIMETERS]	DATE		
TOLERANCE INCHES: .XXX=±.005 XX=±.015 X=±.030	ENGR. AM	4/24/17	
TOLERANCE METRICS: .XXX=±.127 XX=±.38 X=±.95	APPR. JL	4/24/17	
ANGLE PROJECTION	SIZE Dwg. No.		
DO NOT SCALE DRAWING	SCALE		
	N/A		

CODE IDENT	MFG. P/N	DESCRIPTION	ITEM NO.
		COWS COM, INC	
		353 West Grove Ave.	
		Orange, CA 92865	
		CWS Coil Winding Specialist.	
		TITLE:	
		HELICAL COIL,	
		11 UH AIR COIL, 30 AMPS	
		CAC-110M-30AH	REV B