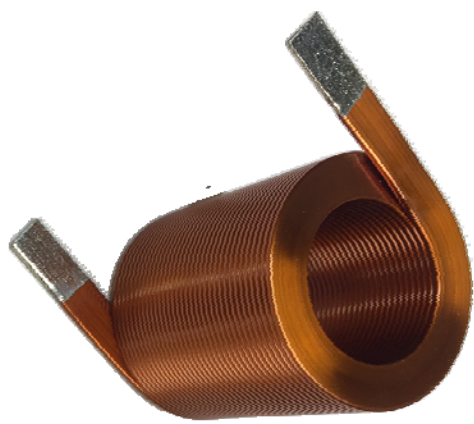
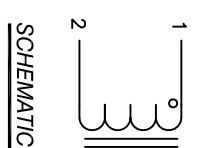
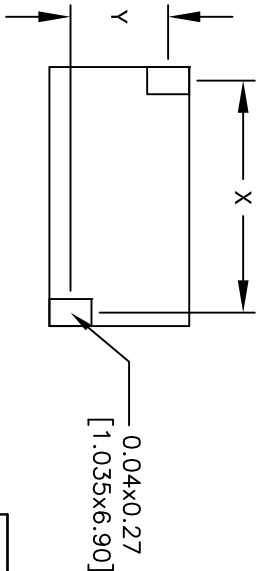
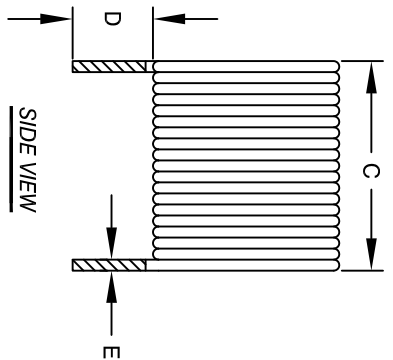
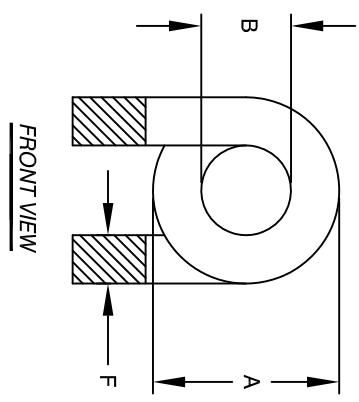


The information contained in this drawing is the sole property of CWS Coil Winding Specialist. Any reproduction in part or whole without written permission of CWS Coil Winding Specialist is prohibited.



DIMENSIONAL TOLERANCES INCHES (MM)									
A	B	C	D	E	F	X	Y		
MAX	MAX	MAX	MIN	REF	REF	REF	REF		
1.30 [33.00]	0.787 [20.00]	1.4567 [37.00]	0.50 [12.70]	0.035 [0.90]	0.236 [6.00]	1.42 [36.10]	1.14 [29.00]		

REVISION HISTORY		SIGN & DATE				
REV	ECN	DESCRIPTION	BY	DATE	CHK	DATE
A		PRODUCTION RELEASE	JL	8/18/17	JLU	8/18/17



- 6 BUILT TO ROHS COMPLIANCE.
- 5 IF APPLICABLE, LABEL PART NUMBER AND REVISION POSITION LEADS AS REQUIRED REMOVE WIRE INSULATION AND TIN WIND COILS EVENLY SPACED
- 4 CONSTRUCTION:  
DCR = 11mΩ MAX  
SRF > 10MHz  
MAX TEMP. RISE @ IDC 45 AMP, LESS THAN 25°C WITH NO AIRFLOW  
INDUCTANCE = 13μH TYP.  
TEST FREQUENCY: 1.0 KHz ; TEST VOLTAGE: 250mV  
RATED MAX. CURRENT = 45 AMPS RMS  
OPERATING TEMPERATURE RANGE : -40° TO 180°C  
SPECIFICATIONS @ 25°C
- 3 WIRE: UL RATED CLASS 200°C  
CORE: AIR
- 2 RATING: UL-CLASS H (180°C) REQUIRED  
MATERIAL: UL RECOGNIZED FLAMMABILITY
- 1 NOTES: UNLESS OTHERWISE SPECIFIED, READ NOTES FROM BOTTOM TO UP.

UNLESS OTHERWISE SPECIFIED	
DIMENSIONING AND TOLERANCE PER ANSI Y14.5M AND (MILLIMETERS).	
TOLERANCE INCHES:	∅ = ±0.30'
.XXX = ±.005	XX = ±.015
.XX = ±.015	X = ±.030'
.X = ±.030'	
ANGLE PROJECTION	DO NOT SCALE DRAWING

CODE IDENT	MFG. P/N	DESCRIPTION	ITEM NO.
PARTS LIST			
AUTOCAD SOLIDWORKS	X		
DRAWN	DATE	TITLE:	
JL	8/18/17	HELICAL COIL, 13 UH AIR COIL, 45 AMPS	
CHECKED	DATE	SIZE DWG. NO.	REV
JL	8/18/17	B	A
ENGR.	DATE	SCALE	
AM	8/18/17	N/A	
APPR.	DATE	SHEET	OF
JL	8/18/17	1	1

CWS Coil Winding Specialist  
353 West Grove Ave.  
Orange, CA 92865