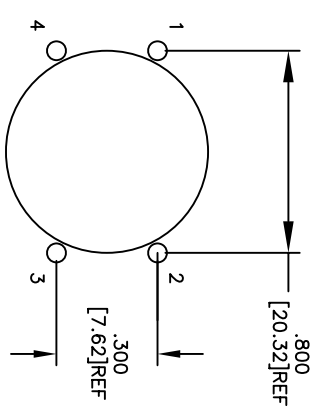
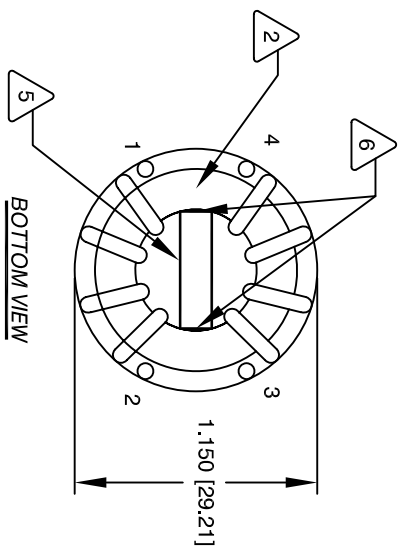
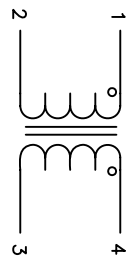
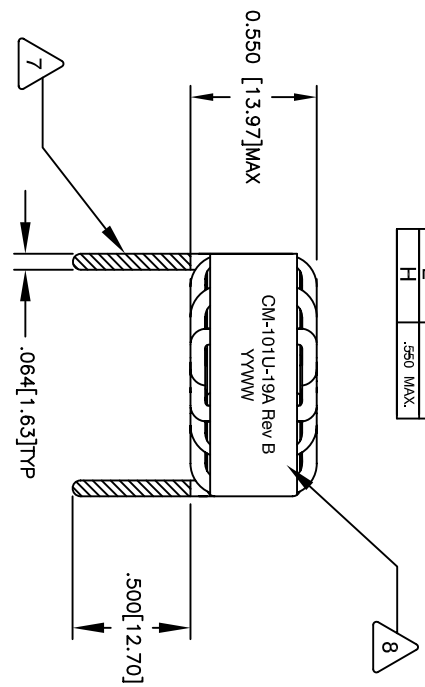


The information contained in this drawing is the sole property of CWS Coil Winding Specialist. Any reproduction in part or whole without written permission of CWS Coil Winding Specialist is prohibited.

A	.300" (ref.)
B	.800" (ref.)
C	.500" MIN.
D	.064" TYP
L	1.150" MAX.
H	.560" MAX.

REVISION HISTORY		SIGN & DATE				
REV	ECN	DESCRIPTION	BY	DATE	CHK	DATE
A		PRODUCTION RELEASE	RPR	5/16/04	JLJU	5/16/04
B		CORRECT REV A DWG DIMENSIONAL	KJC	4/20/10	AK	4/20/10



9 BUILD TO ROHS COMPLIANCE

8 WHERE SHOWN, USING A PERMANENT MARKING METHOD MARK PART NUMBER AND REVISION WRAP INDUCTOR WITH GLASS (3M #79 OR EQUAL) TAPE

7 TO THE CORE MUST REST FLAT ON PCB. LEADS MUST BE TANGENT FLUSH WITH THE CORE EDGE, AS SHOWN (I.E. COIL REMOVE INSULATION AND TIN LEADS APPROX. 0.5 INCH

6 APPLY EPOXY WHERE SHOWN

5 SPACER : TS3.00X9.00X11.70-FR-4 or EQUAL

4 WIND BOTH COILS EVENLY SPACED CONSTRUCTION:

WEIGHT: 17 GRAM
 1250 Turns ISOLATION BETWEEN WINDING
 INTER-WINDING CAPACITANCE = 5.0 pF TYPICAL
 LEAKAGE INDUCTANCE = 1.0 uH TYPICAL
 CURRENT RATING = 19 AMPS
 DCR ON EACH WINDING = 2.0 MILLIOHMS MAX
 L = 100 uH Minimum, 10 KHz, 250 mV
 SPECIFICATIONS:

3 WIRE: UL RECOGNIZED 180 °C OR ABOVE RATED MAGNET WIRE CWS BYTEAMARK OR OTHER APPROVED PART CORE: COATED FERRITE TOROID, HIGH PERM MNZN

2 RATING CLASS B (130 °C MIN.) REQUIRED MATERIAL: UL RECOGNIZED 94V-0 FOR FLAMMABILITY

1 NOTES: UNLESS OTHERWISE SPECIFIED, READ FROM BOTTOM UP CAGE CODE: 5DMEZ

CODE	IDENT	MFG. P/N	DESCRIPTION	ITEM NO.
AUTOCAD		X		
SOLIDWORKS				
SIGN		DATE		
DRW	RPR	5/16/04		
DRXD	JLJU	5/16/04		
ENGR	KSJM	5/16/04		
APPR	JLJU	5/16/04		

UNLESS OTHERWISE SPECIFIED	
DIMENSIONING AND TOLERANCE PER ANSI Y14.5M	
ALL DIMENSIONS ARE IN INCHES AND [MILLIMETERS]	
TOLERANCE INCHES: .XX±.005 .X±.015 .X±.030	
TOLERANCE METRICS: .XX±.127 .X±.38	
ANGLE PROJECTION	30°
DO NOT SCALE DRAWING	

PARTS LIST		CWS Coil Winding Specialist.	
TITLE: Common Mode Line Filter		353 W Grove Ave	
SIZE: B		Orange, CA 92865	
SCALE: 2=1		CM-101U-19A	
SHEET 1 OF 1		REV B	