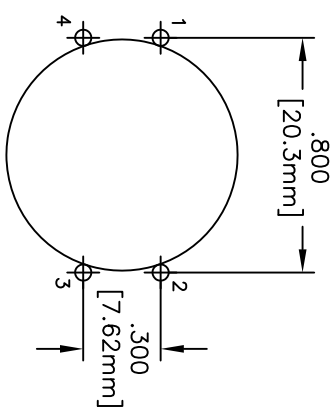
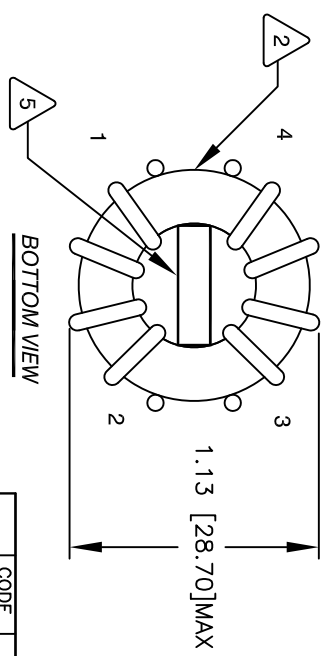
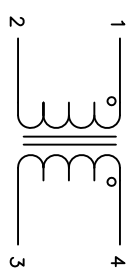
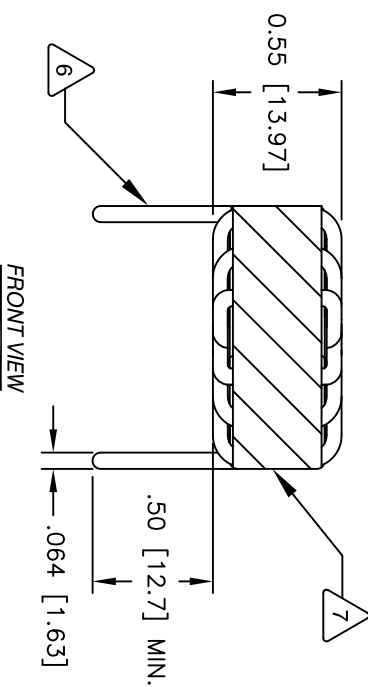


The information contained in this drawing is the sole property of CMS Coil Winding Specialist. Any reproduction in part or whole without written permission of CMS Coil Winding Specialist is prohibited.

REVISION HISTORY		SIGN & DATE				
REV	ECN	DESCRIPTION	BY	DATE	CHK	DATE
A		PRODUCTION RELEASE	RFR	11/21/07	JLJU	11/21/07
B		ADDED VOLTAGE RATING	TN	03/18/2020	JL	03/18/2020



- 9 SUPERCEDDE CM-65R3U-23A AND CM-6R5U-23A
- 8 BUILT TO ROHS COMPLIANCE AND LEAD FREE
- 7 WHERE SHOWN, USING A PERMANENT MARKING METHOD
MARK PART NUMBER AND REVISION
WRAP INDUCTOR WITH 3M #79 or EQUIVALENT
- TO THE CORE
MUST REST FLAT ON PCB, LEADS MUST BE TANGENT
FLUSH WITH THE CORE EDGE, AS SHOWN (I.E. COIL
REMOVE INSULATION AND TIN LEADS APPROX. 0.5 INCH
- 6 SPACER : FR4 OR EQUIVALENT (UL 94-V0)
- 5 WIND BOTH COILS EVENLY SPACED
CONSTRUCTION:
- 4 WINDING TO WINDING AND WINDING TO CORE.
HIPOT TESTING: 1500VDC, 2mA, 5s FOR
INTER-WINDING CAPACITANCE = 16.8 pF
LEAKAGE INDUCTANCE = 0.62 uH
CURRENT RATING = 23.0 AMPS
DCR ON EACH WINDING = 2.0 MILLIOHMS MAX
L = 65 uH MIN. @ 10 KHZ, 250 mV
- 3 SPECIFICATIONS:
- WIRE: UL RECOGNIZED 155°C OR 200°C (PREFERRED) RATED MAGNET WIRE
CWS BYTEMARK OR OTHER APPROVED PART
CORE: COATED FERRITE TOROID, HIGH PERM MNZN
- 2 RATING CLASS B (130°C MIN.) REQUIRED
- 1 MATERIAL: UL RECOGNIZED 94V-0 FOR FLAMMABILITY

NOTES: UNLESS OTHERWISE SPECIFIED, READ NOTE FROM BOTTOM UP.

UNLESS OTHERWISE SPECIFIED	
DIMENSIONING AND TOLERANCE PER ANSI Y14.5M AND [MILLIMETERS]	DO NOT SCALE DRAWING
TOLERANCE INCHES: XXX=±.005 XX=±.015 X=±.030 TOLERANCE METRICS: XXX=±.127 XX=±.38 X=±.58	ANGLE PROJECTION

CODE IDENT	MFG. P/N	DESCRIPTION	ITEM NO.
PARTS LIST			
AUTOCAD SOLIDWORKS	X		
DRAWN	DATE		
KLC	12/22/09		
CHKD	DATE		
AK	12/22/09		
ENGR	DATE		
KLC	12/22/09		
APPR	DATE		
KLC	12/22/09		
TITLE:		CWS Coil Winding Specialist.	
DRAWN:		353 W GROVE AVENUE	
WWW.COILWS.COM		ORANGE, CA. 92865	
SIZE		REV	
Dwg. No.		B	
CM-650U-23.0A		B	
SCALE		SHEET 1 OF 1	
2=1			

Common Mode Line Filter
65 uH Minimum, 23 Amp