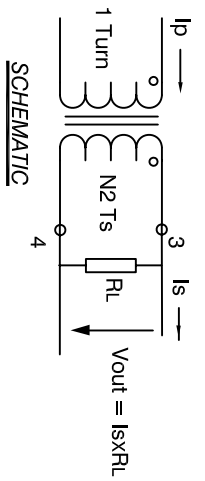


The information contained in this drawing is the sole property of Coil Winding Specialist, Inc. Any reproduction in part or whole without written permission of Coil Winding Specialist is prohibited.

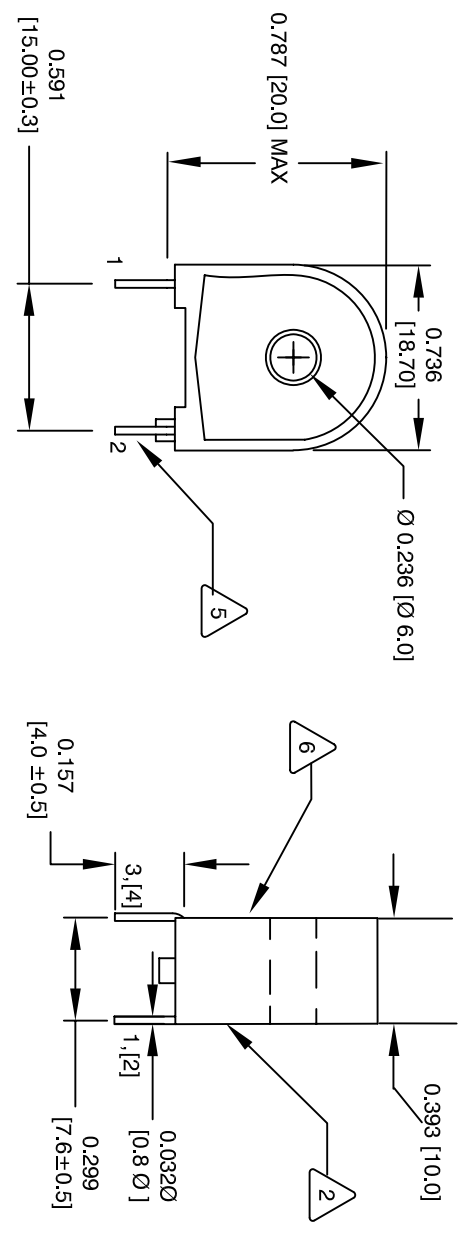


Note: All measurements are carried out using rms value responding meter. Unless requested the terminating resistor and the 1-turn primary are not supplied.

| Primary Current | 0.1 Amp | 0.5 Amp | 1.0 Amp | 5.0 Amp | 10 Amp |
|------------------------------------------|---------|---------|---------|---------|--------|
| Secondary Output Voltage for 10 Ohm Load | 2 mV | 10 mV | 20 mV | 100 mV | 200 mV |

| REVISION HISTORY | | | SIGN & DATE | | | |
|------------------|-----|-------------------------|-------------|---------|------|---------|
| REV | ECN | DESCRIPTION | BY | DATE | CHK | DATE |
| B | | PRODUCTION RELEASE | RPR | 8/24/04 | JLJU | 8/24/04 |
| C | | ELECTRICAL SPEC. CHANGE | AK | 7/27/12 | JLJU | 7/27/12 |
| D | | MECHAN. SPEC. CHANGE | AK | 1/16/13 | BD | 1/16/13 |

- 6 MARK PART NUMBER AND REVISION
- 5 REMOVE INSULATION, SOLDERED TO LEADS



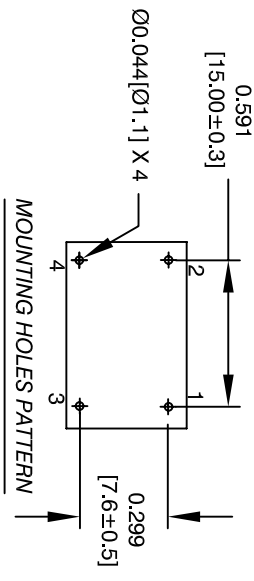
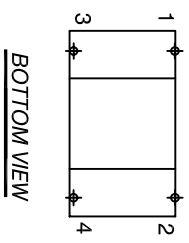
- 4 CONSTRUCTION: ENCAPSULATED USING BOBBIN.

WEIGHT = 6.0 GRAMS
 HP/POT = 2500 V/1mAMP/1SEC.
 OPERATING TEMP. = - 25 °C TO 125 °C
 NOMINAL RATED CURRENT RATIO = 5:1
 RECOMMENDED BURDEN RESISTOR (RL) = 10 OHMS
 DC RESISTANCE @ 25 °C = 20 OHMS MAX
 MAX AMPLITUDE ERROR = ± 5%
 ACCURACY CLASS = 5% OR BETTER
 PRIMARY CURRENT RANGE: 0.1 AMP to 10 AMP
 SPECIFICATIONS @ 25 °C :

- 2 CORE: TAPE WOUND

WIRE: UL RECOGNIZED 130 °C RATED MAGNET WIRE
 CWS BYTEMARK OR OTHER APPROVED PART
 BOBBIN RATING CLASS B (130 °C) REQUIRED
 MATERIAL: UL RECOGNIZED 94V-0 FOR FLAMMABILITY
 UNIT: INCHES [MM]

Note: Pin 3 and 4 are only used for mechanical mounting on to PCB



| UNLESS OTHERWISE SPECIFIED | |
|--------------------------------------------------------------|------------|
| DIMENSIONING AND TOLERANCE PER ANSI Y14.5M AND [MILLIMETERS] | |
| TOLERANCE INCHES: | ± = ±0.30° |
| TOLERANCE METRICS: | ± = ±0.30° |
| XXX = ±.010 XX = ±.020 X = ±.051 | |
| XX = ±.254 X = ±.51 | |
| ANGLE PROJECTION | 1 |
| DO NOT SCALE DRAWING | |

| QTY | CODE IDENT | MFG. P/N | DESCRIPTION | ITEM NO. |
|-----------------|--------------------|------------------------------------|-------------|----------|
| PARTS LIST | | | | |
| | AUTOCAD SOLIDWORKS | X | | |
| | DRWNN | RPR | 8/24/04 | |
| | ENGR. | KSUM | 8/24/04 | |
| | APPR. | JLJU | 8/24/04 | |
| TITLE: | | 50/60 HZ Current Sense Transformer | | |
| SIZE [ING. NO.] | | CT-0705-HA | | |
| SCALE | | 2=1 | | |
| REV | | D | | |

sales@coilws.com
 www.coilws.com
 Coil Winding Specialist, Inc
 353 W. Grove Ave.,
 Orange, CA 92865