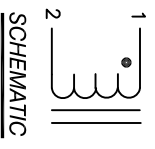
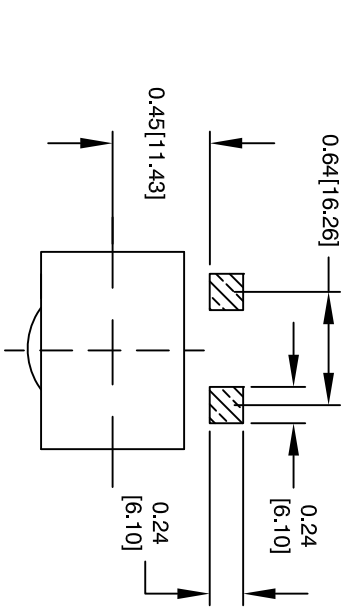
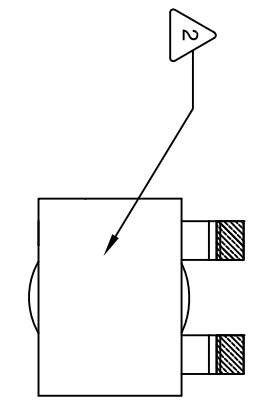
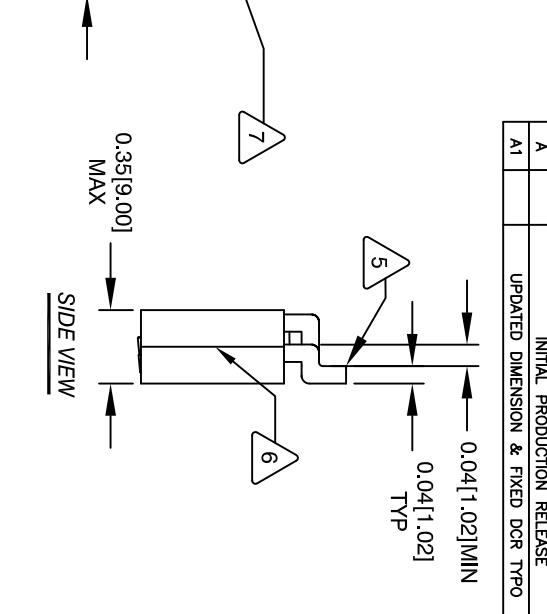
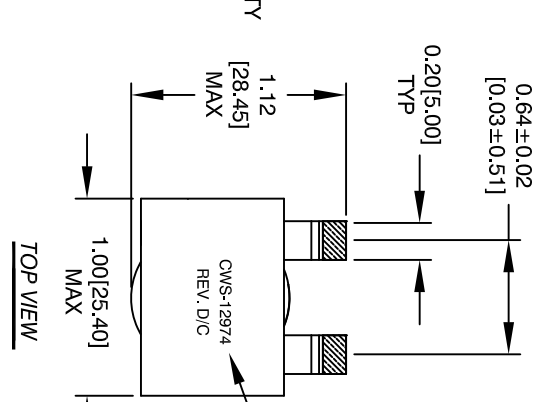


The information contained in this drawing is the sole property of Coil Winding Specialist, Inc. Any reproduction in part or whole without written permission of Coil Winding Specialist is prohibited.



- 1 BUILT TO ROHS COMPLIANCE AND LEAD FREE
 - 2 PART WILL BE SUPPLIED IN TAPE & REEL OF ORDERED QUANTITY
 - 3 LABEL CWS LOGO, PART NUMBER, REVISION AND DATE CODE
 - 4 BOND CORES TOGETHER USING EPOXY
 - 5 CO-PLANAR TO 0.006[0.15] MAX.
 - 6 THE LEADS MUST REST FLAT ON PCB AND ARE REMOVE INSULATION AND TIN LEADS
 - 7 CONSTRUCTION:
 - 8 WEIGHT: APPROX. 0.70 OZ
HIPOT TEST WINDING TO CORE ISOLATION 300V RMS
STORAGE TEMP. RANGE: -54°C TO 150°C
INDUCTOR OPERATING TEMP. RANGE: -40°C TO 150°C
SRF: > 10MHz
RATED CURRENT = 75 AMPS
DC BIAS: SEE TABLE ON THE RIGHT
DCR = 0.9 MILLI-OHMS MAX.
L = 1.0 uH ± 20% @ 0 ADC, 0.1 Vrms, 100KHz.
 - 9 WIRE: UL RECOGNIZED 200°C RATED MAGNET WIRE
CORE: FERRITE CORE
 - 10 HELICAL COIL RATING 200°C REQUIRED
 - 11 MATERIAL: UL RECOGNIZED 94V-0 FOR FLAMMABILITY
- ANY TOLERANCE, THIS DIM. CAN VARY A LITTLE FROM PART TO PART.
"TYP" IN DIMENSIONAL TOL. REFERS TO A NON-CRITICAL TYPICAL (AVERAGE) DIM. WITHOUT NOTES: UNLESS OTHERWISE SPECIFIED, READ FROM BOTTOM UP.
CAGE CODE: 5DME2



REVISION HISTORY			
REV	ECN	DESCRIPTION	DATE
A		INITIAL PRODUCTION RELEASE	09/02/2020
A1		UPDATED DIMENSION & FIXED DCR TYPO	10/23/2020

DC BIAS TABLE

DC BIAS (AMP)	L@100KHz (REF)
0	1.15uH
10	1.15uH
20	1.15uH
30	1.15uH
40	1.14uH
50	1.14uH
60	1.13uH
70	1.12uH
75	1.10uH

UNLESS OTHERWISE SPECIFIED
DIMENSIONING AND TOLERANCE PER ANSI Y14.5M
AND [MILLIMETERS].
TOLERANCE INCHES:
XXX±.005 XX±.015 ±.030
XX±.125 X±.250
ANGLE PROJECTION
DO NOT SCALE DRAWING

AUTOCAD SOLIDWORKS	X	DATE	DATE	DATE
DRWNN	TN	09/02/2020		
CHKDD	JM	09/02/2020		
ENGR	JL	09/02/2020		
APPR	JL	09/02/2020		

sales@coilws.com
www.coilws.com
353 W GROVE AVE
ORANGE, CA 92665

Coil Winding Specialist, Inc.

TITLE: Helical Coil Inductor
1.0 uH, 75 Amps, SMD

SIZE Dwg. No. CWS-12974

SCALE 4=1

REV A1