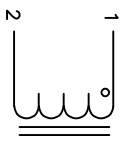


DIMENSIONAL TOLERANCES INCHES (MM)									
	C	D	E	F	G	L	L1	W	H
MIN	12.00	2.25	2.00	0.68	16.50	10.23	5.00	4.80	
	[304.80]	[57.15]	[50.80]	[17.27]	[419.10]	[259.84]	[127.00]	[116.84]	
	0.50								
	[12.70]								

REVISION HISTORY			
REV	ECN	DESCRIPTION	SIGN & DATE
0		REVISED LEAD CONSTRUCTION & SPEC.	BR DATE 08/09/21
01		REVISED DIM D TO 12704.80 MIN.	TL DATE 02/15/23
02		FIXED THRO IN L1 DIM. ASSIGNED MINIMUM E & G DIM.	TL DATE 03/20/23



SCHEMATIC

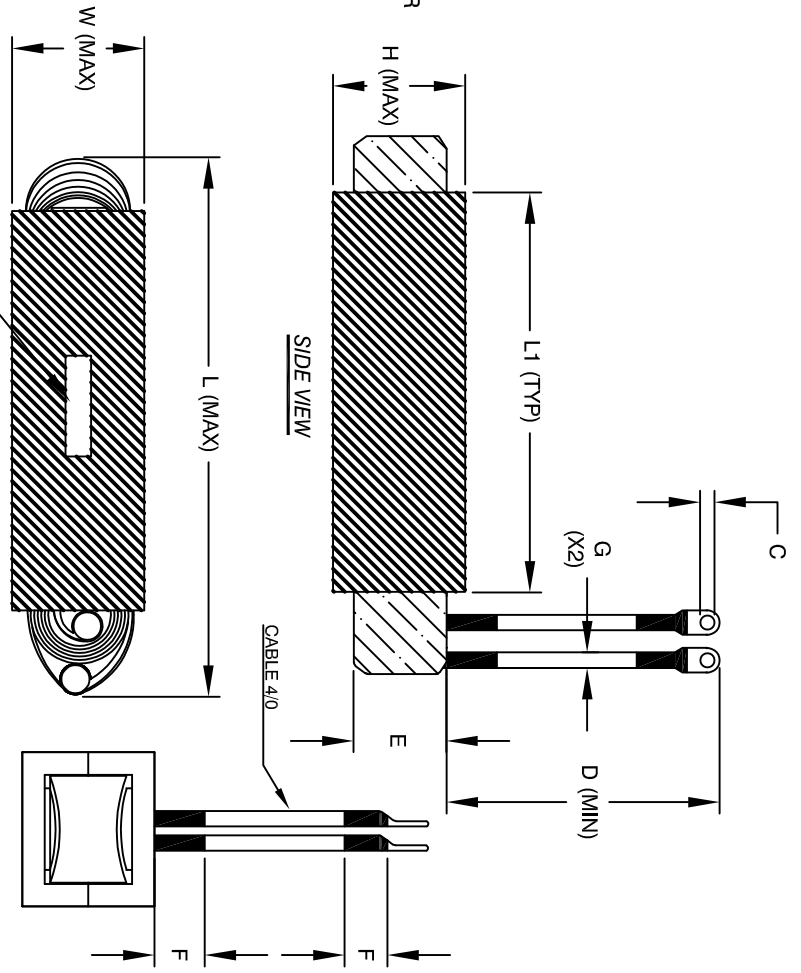
- 8 APPLICATION: OUTPUT CHOKE, HIGH CURRENT INDUCTOR, INPUT FILTER
- 7 BUILT TO ROHS COMPLIANCE
- 6 LABEL PART NUMBER AND REVISION WHERE SHOWN
- 5 VARNISH AND CURE
- 4 APPLY SILICONE

- 3 WRAP TAPE AROUND CORES WITH CORES AND NOMEX PRE FORMED FLAT COPPER SHEETS
- 2 CONSTRUCTION:

- 1 WEIGHT: 44 LB (TYP)
 RECOMMENDED AMBIENT OPERATING TEMP: -40°C TO 105°C
 HI-POT TEST FROM WINDING TO CORE 1000VDC @ 2mA, 1 MIN
 INTERWINDING CAPACITANCE = 196pF TYP @ SRF
 |Z| = 10 KILO-OHM TYP @ SRF
 SRF = 1.14 MHZ TYPICAL
 RATED CURRENT: 300 AMPS, APPROPRIATE AIR FLOW NEEDED.
 DCR = 4 MILLI-OHM MAX.
 L@DC BIAS: SEE TABLE ON THE RIGHT.
 L = 104uH +0%, -15%, MEASURED AT 10 KHZ, 0.25V, ZERO DC BIAS SPECIFICATIONS:

- BAKE VARNISH
- SILICONE DOW CORNING OR EQUAL
- OUTER WRAP: 3M KAPTON TAPE OR EQUAL
- 2 CORE: COMPACTED POWER CORE
- 1 MATERIAL: UL RECOGNIZED

NOTES: UNLESS OTHERWISE SPECIFIED READ FROM BOTTOM UP.
CAGE CODE: SDME2



DC BIAS (AMP)	L@10KHZ (REF)
0	104uH
20	104uH
40	104uH
60	103uH
80	103uH
100	102uH
120	101uH
140	100uH
160	99uH
180	98uH
200	97uH
220	96uH
240	94uH
260	92uH
280	91uH
300	90uH

PARTS LIST			
AUTOCAD	X	DATE	DATE
SOLIDWORKS			
UNLESS OTHERWISE SPECIFIED			
DIMENSIONING AND TOLERANCE PER ANSI Y14.5M			
ALL DIMENSIONS ARE IN INCHES AND (MILLIMETERS)			
TOLERANCE INCHES: .XXX=±.010 .XX=±.020 .X=±.050			
TOLERANCE METRICS: .XXX=±.254 .XX=±.51 .X=±1.27			
ANGLE PROJECTION			
DO NOT SCALE DRAWING			
DRWN	JL	08/11/17	
CHECKD	JLAU	08/11/17	
ENGR	JLAU	08/11/17	
APPR	BO	08/11/17	
SCALE	NOT TO SCALE		
TITLE:	High Current Inductor		
SIZE	DME NO. CWS-1EE-12720		
REV	D2		
www.coliws.com		Coil Winding Specialist, Inc.	
sales@coliws.com		353 W GROVE AVE	
		ORANGE, CA 92865	
SHEET		1 OF 1	