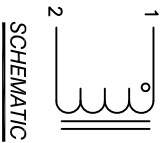


The information contained in this drawing is the sole property of Coil Winding Specialist, Inc. Any reproduction in part or whole without written permission of Coil Winding Specialist, Inc. is prohibited.

DIMENSIONAL TOLERANCES INCHES (MM)									
C	D	E	F	G	L	L1	W	H	
0.50 [12.70]	21.65 [550.00]	2.25 [57.15]	2.00 [50.80]	0.68 [17.27]	15.50 [393.70]	11.00 [279.40]	5.00 [127.00]	4.80 [116.84]	

REVISION HISTORY				SIGN & DATE			
REV	ECN	DESCRIPTION	BR	DATE	CHK	DATE	
A		PRODUCTION RELEASE	JLU	08/11/17	JLU	08/11/17	
B		UPDATED DIMENSIONS	JLU	08/28/17	JLU	08/28/17	



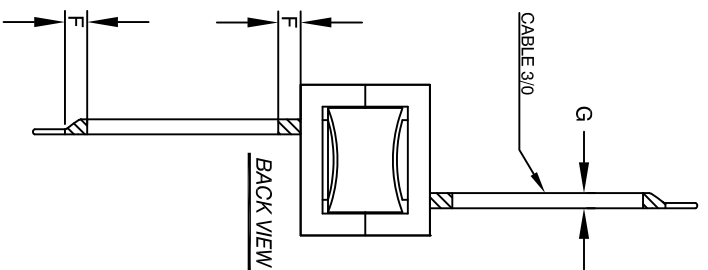
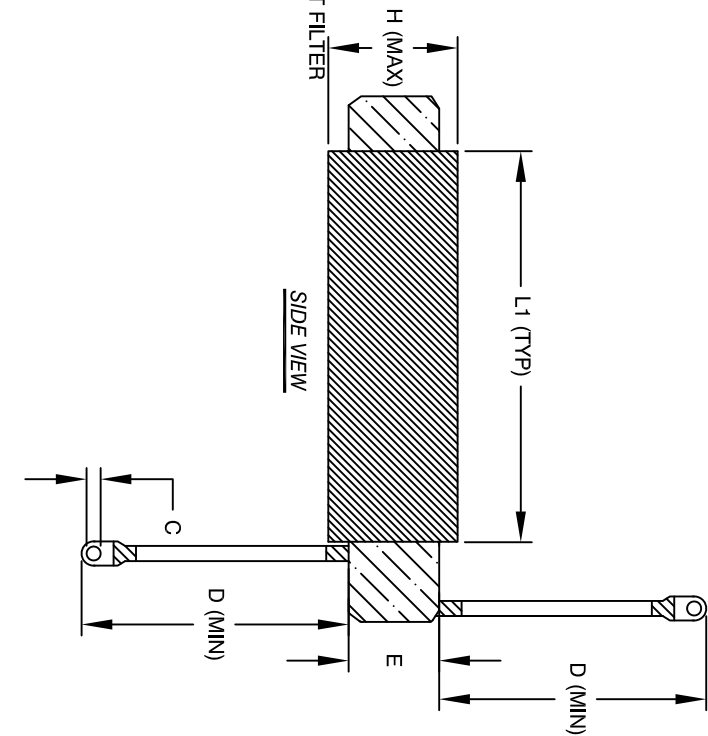
SCHEMATIC

- APPLICATION: OUTPUT CHOKE, HIGH CURRENT INDUCTOR, INPUT FILTER
- BUILT TO ROHS COMPLIANCE
- 7 LABEL PART NUMBER AND REVISION WHERE SHOWN
- DIMENSION F = HEAT SHRINK 2"
- VARNISHED AND CURE
- APPLY SILICON IF REQUIRED
- WRAP TAPE AROUND CORES WITH CORES AND NOMEX
- PRE FORMED FLAT COPPER SHEETS
- CONSTRUCTION:

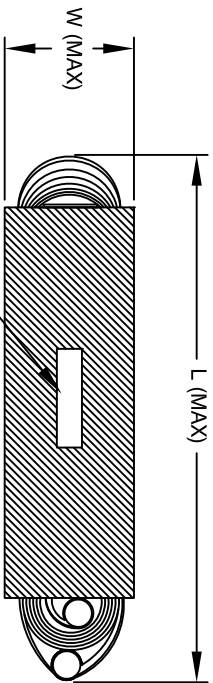
WEIGHT: 44 LB (TYP)  
 RECOMMENDED OPERATING FREQUENCY: 60HZ TO 500KHZ  
 RECOMMENDED AMBIENT OPERATING TEMP: -40°C TO 105°C  
 HI-POT TEST FROM WINDING TO CORE 1000VDC @ 2mA, 1 MIN  
 INTERWINDING CAPACITANCE @ SRF = 196pF (TYP)  
 |Z|@SRF=10 KIL-OHM  
 SRF=1.14 MHZ  
 RATED CURRENT: 300 AMPS, APPROPRIATE AIR FLOW NEEDED.  
 DCR = 4 MILLIOHM MAX.  
 L@DC BIAS: SEE TABLE ON RIGHT.  
 L=104uH +0%, -15%, MEASURED AT 10 KHZ, 0.25V, ZERO DC BIAS  
 SPECIFICATIONS:

BAKE VARNISH  
 SILICON DOW CORNING OR EQUAL  
 OUTER WRAP: 3M GLASS OR EQUAL  
 CORE: COMPACTED HIGH FLUX CORE  
 MATERIAL: UL RECOGNIZED

NOTES: UNLESS OTHERWISE SPECIFIED READ FROM BOTTOM UP.  
 CAGE CODE: 5DME2



DC-BIAS	L
0A	104uH
20A	104uH
40A	104uH
60A	103uH
80A	103uH
100A	102uH
120A	101uH
140A	100uH
160A	99uH
180A	98uH
200A	97uH
220A	96uH
240A	94uH
260A	92uH
280A	91uH
300A	90uH



TOP VIEW

UNLESS OTHERWISE SPECIFIED	
DIMENSIONING AND TOLERANCE PER ANSI Y14.5M	DRWN JL
ALL DIMENSIONS ARE IN INCHES AND [MILLIMETERS].	ENGR JLU
TOLERANCE INCHES: .XXX=±.010 .XX=±.020 .X=±.030 .XXX=±.254 .XX=±.51	APPR BO
ANGLE PROJECTION	
DO NOT SCALE DRAWING	

PARTS LIST	
AUTOCAD SOLIDWORKS	X
DATE	08/11/17
DATE	08/11/17
DATE	08/11/17

www.coilws.com		Coil Winding Specialist, Inc.	
sales@coilws.com		353 W. GROVE AVE	
		ORANGE, CA 92665	
TITLE:	High Current Inductor	SIZE	DWG. NO.
	High Frequency Inductor		CWS-1EE-12720
	104 uH, 300 Amps	SCALE	NOT TO SCALE
REV	B	SHEET	1 OF 1