

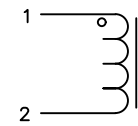
The information contained in this drawing is the sole property of CWS Coil Winding Specialist. Any reproduction in part or whole without written permission of CWS Coil Winding Specialist is prohibited.

DIMENSIONAL TOLERANCES INCHES [MM]

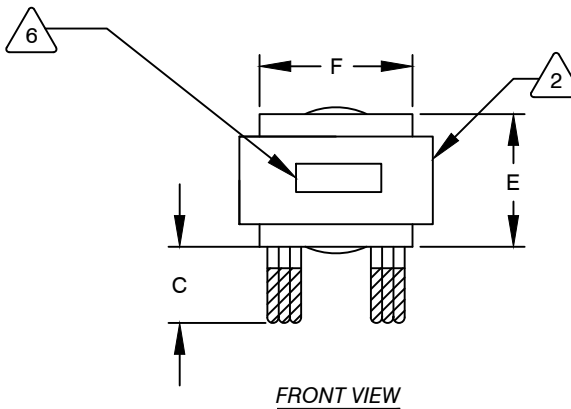
A MAX	B MAX	C MIN	D REF	E MAX	F MAX	G MAX		
2.24 [57.00]	2.24 [57.00]	0.75 [19.05]	0.08 [2.05]	1.77 [45.00]	1.46 [37.00]	1.57 [40.00]		

REVISION HISTORY

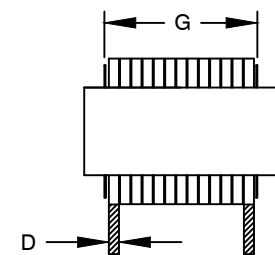
REV	ECN	DESCRIPTION	SIGN & DATE			
			BY	DATE	CHK	DATE
B			JL	11/25/17	JLAU	11/25/17
B1		UPDATED SPEC.	TN	09/28/2020	JL	09/28/2020



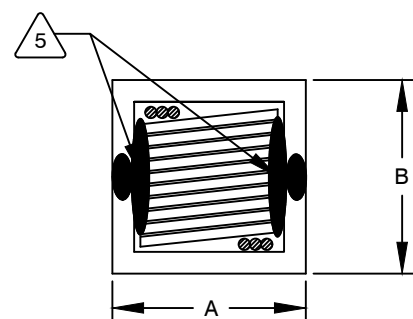
SCHEMATIC



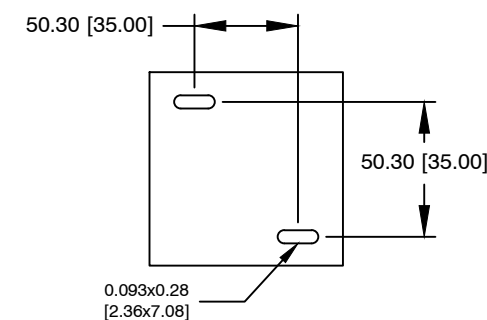
FRONT VIEW



SIDE VIEW



BOTTOM VIEW



MOUNTING HOLES PATTERN

DC BIAS TABLE

DC BIAS (AMP)	L@10KHz (REF)
0	90uH
5	84uH
10	81uH
15	77uH
20	73uH
25	69uH
30	64uH
35	58uH
40	54uH
45	49uH
50	45uH
55	41uH
60	38uH
65	35uH
70	32uH
75	30uH

7 BUILT TO RoHS COMPLIANCE

6 LABEL PART NUMBER AND REVISION WHERE SHOWN

5 VARNISH PART AND CURE  
APPLY SILICONE WHERE SHOWN

4 WRAP GLASS TAPE AROUND CORES  
WITH CORES AND MYLAR SPACERS  
ASSEMBLE PRE FORMED FLAT HELICAL COIL  
CONSTRUCTION:

WEIGHT: 575 GRAM  
RECOMMENDED OPERATING TEMP: -40°C TO 85°C AT 55°C AMBIENT  
HI-POT TEST FOR WINDING TO CORE ISOLATION. 1000VDC @ 2mA, 1 MIN  
RATED CURRENT: 75 AMPS WITH FORCED AIRFLOW  
INTERWINDING CAPACITANCE = 57pF TYP @ SRF  
|Z| = 14.7 KILO-OHM TYP @ SRF  
SRF = 2.3 MHz TYPICAL  
DCR = 5.0 MILLI-OHMS MAX.  
INDUCTANCE @ DC BIAS: SEE TABLE ON THE RIGHT  
L = 90.0 uH ± 15%. @ 0ADC ,10KHz, 250mV

3 SPECIFICATIONS @ 25°C:

VARNISH DOLPH BC-346A or EQUAL  
SILICONE DOW CORNING RTV 3165 OR EQUAL  
NOMEX SPACERS FOR SIDE AND CENTER LEG OF CORES  
OUTER WRAP: GLASS TAPE  
WIRE: UL RECOGNIZED 200°C RATED MAGNET WIRE  
CORE: POWDERED CORE

2 INSULATION CLASS 200°C REQUIRED  
1 MATERIAL: UL RECOGNIZED FOR FLAMMABILITY

ANY TOLERANCE. THIS DIM. CAN VARY A LITTLE FROM PART TO PART.  
"TYP" IN DIM. TOL. TABLE, IF APPLICABLE, REFERS TO A NON-CRITICAL TYPICAL (AVERAGE) DIM. WITHOUT

NOTES: UNLESS OTHERWISE SPECIFIED, READ NOTES FROM BOTTOM UP.  
CAGE CODE: 5DME2

UNLESS OTHERWISE SPECIFIED  
DIMENSIONING AND TOLERANCE PER ANSI Y14.5M  
ALL DIMENSIONS ARE IN INCHES AND [MILLIMETERS].  
TOLERANCE INCHES: .XXX±.010 .XX±.020 <math>\angle</math>±.030  
TOLERANCE METRICS: .XXX±.25+ .XX±.51 <math>\angle</math>±.030  
ANGLE PROJECTION   
DO NOT SCALE DRAWING

QTY	CODE IDENT	MFG. P/N	DESCRIPTION	ITEM NO.
<b>PARTS LIST</b>				
AUTOCAD		X		
SOLIDWORKS				
SIGN		DATE		
DRAWN JL		11/25/17		<b>www.coilws.com</b> sales@coilws.com Coil Winding Specialist, Inc. 353 W GROVE AVE ORANGE, CA 92865
CHECKED JLAU		11/25/17		
ENGR. KSUM		11/25/17		
APPR. JLAU		11/25/17		
TITLE:			Inductor, High Current Helical 90 uH, 75 Amps, Horizontal	
SIZE	DWG. NO.		REV	
B	CWS-1HW-12203		B1	
SCALE			SHEET 1 OF 1	