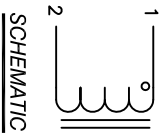
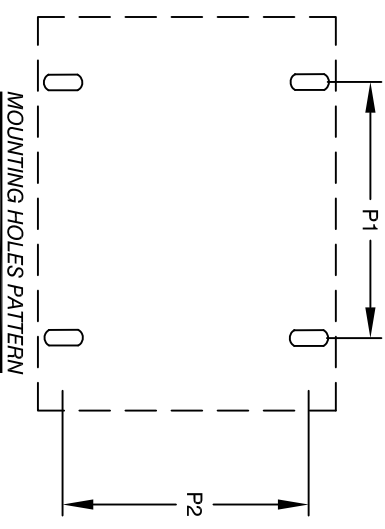
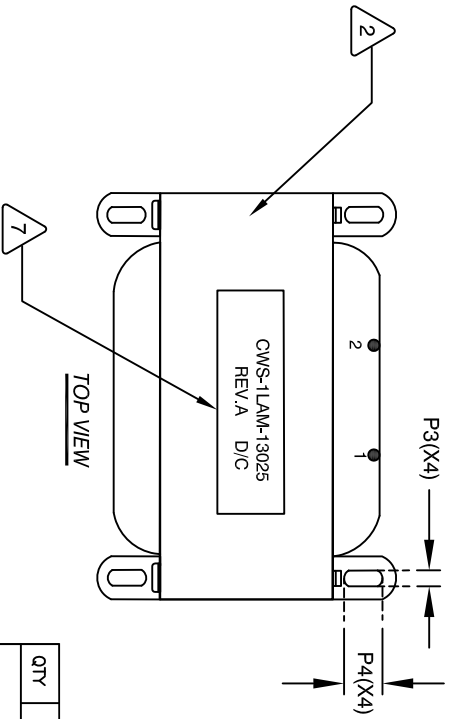
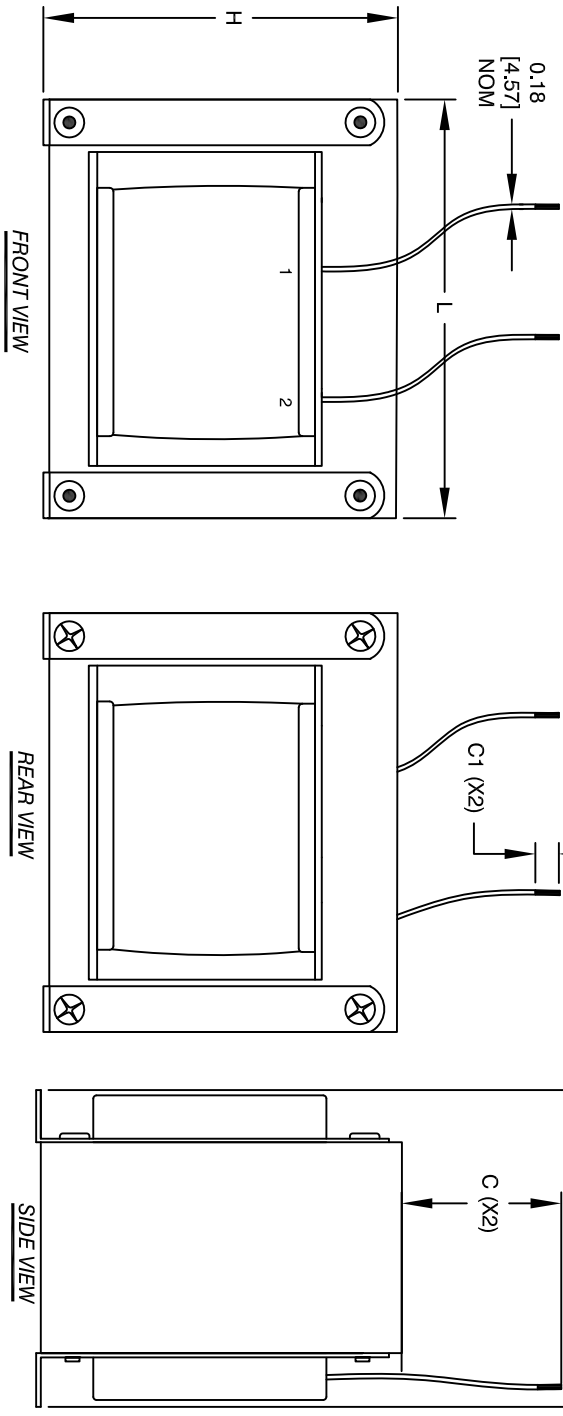


The information contained in this drawing is the sole property of Coil Winding Specialist, Inc. Any reproduction in part or whole without written permission of Coil Winding Specialist, Inc. is prohibited.

DIMENSIONAL TOLERANCE INCHES [MM]				REVISION HISTORY											
L	H	W	P1	P2	P3(X4)	P4(X4)	C (X2)	C1 STRIP (X2) TYP	REV	ECN	DESCRIPTION	BY	DATE	SIGN & DATE	
NOM	NOM	NOM	REF	REF	REF	REF	TYP	TYP	B		UPDATED MECH. SPEC.	TN	01/20/22	CHK J.L.	DATE 01/20/22
3.43 [87.00]	3.05 [77.50]	2.38 [60.55]	2.80 [71.00]	2.05 [52.00]	0.20 [5.08]	0.36 [9.14]	12.00 [304.80]	1.00 [25.40]							



SCHEMATIC



8 BUILT TO ROHS COMPLIANCE AND LEAD FREE.

7 LABEL PART NUMBER, REVISION AND DATE CODE

6 VARNISH PART AND CURE

5 STRIP LEAD WIRES INSULATION APPROX. 1.00 IN. WRAP COIL WITH INDUCTOR INSULATION TAPE AND CONNECT TO LEAD WIRES. WIND COILS EVENLY SPACED AROUND BOBBIN CONSTRUCTION:

4 WEIGHT: 1320 GRAMS APPROX.

3 HI-POT WINDING-TO-CORE 1000 VDC, 2mA, 2 SEC R @ 1KHz = 700mΩ TYP R @ 100Hz = 125mΩ TYP DCR = 93.30mΩ TYPICAL INDUCTANCE = 1.40mH±3% @ 55.7Hz, 250mV, 0ADC BIAS RATED MAX CURRENT = 10 AMPS RMS RATED NOMINAL CURRENT = 5 AMPS RMS OPERATING TEMPERATURE RANGE: -40°C TO 105°C SPECIFICATIONS @ 25°C:

2 VARNISH: DOLPH OR EQUAL. LEAD WIRE: UL RATED 105C, 600V MAGNET WIRE: UL RATED CLASS 200°C CORE: GAPPED EI LAMINATION STACK RATING UL-CLASS K (200°C) REQUIRED MATERIAL: UL RECOGNIZED FLAMMABILITY

1 ANY TOLERANCE: THIS TYP DIM. CAN VARY A LITTLE FROM PART TO PART. "TYP" IN DIM. TOL. TABLE REFERS TO A NON-CRITICAL TYPICAL (AVERAGE) DIM. WITHOUT NOTES: UNLESS OTHERWISE SPECIFIED, READ NOTES FROM BOTTOM TO UP. CAGE CODE: 5DMIE2

UNLESS OTHERWISE SPECIFIED	
DIMENSIONING AND TOLERANCE PER ANSI Y14.5M	ALL DIMENSIONS ARE IN INCHES AND [DIMENSIONS].
TOLERANCE INCHES: .XX±.010 .X±.020 .XXX±.254 .XX±.51	ANGLE PROJECTION
DO NOT SCALE DRAWING	

QTY	CODE	MFG. P/N	DESCRIPTION	ITEM NO.
	IDENT			
PARTS LIST				
www.coilws.com			Coil Winding Specialist, Inc.	
sdes@coilws.com			353 W GROVE AVE	
			ORANGE, CA 92665	
INDUCTOR				
1.4mH, 5.0Amps, 55.7Hz				
CWS-1LAM-13025				
SCALE NOT TO SCALE				
SHEET 1 OF 1				