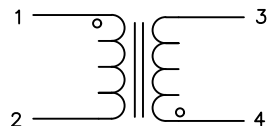


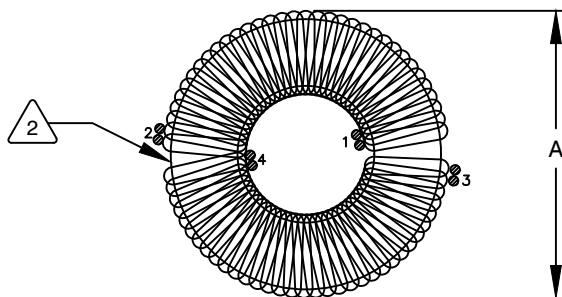
The information contained in this drawing is the sole property of CWS Coil Winding Specialist. Any reproduction in part or whole without written permission of CWS Coil Winding Specialist is prohibited.



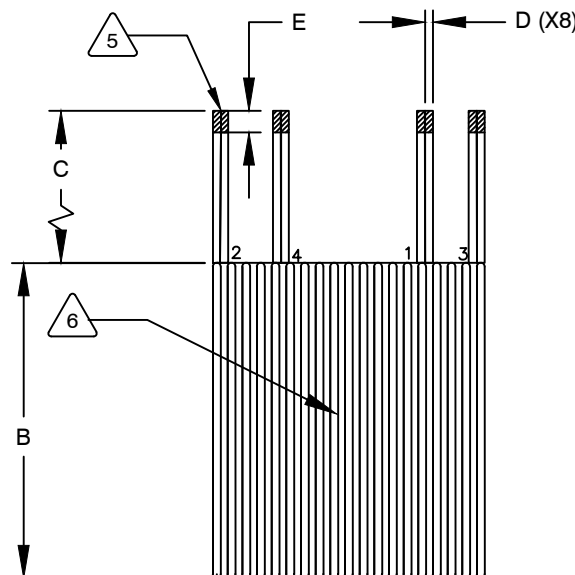
SCHEMATIC

DIMENSIONAL TOLERANCES INCHES [MM]				
A MAX	B MAX	C MIN	D TYP	E (X4) MIN
3.40 [85.50]	2.68 [68.00]	12.00 [304.80]	0.07 [1.83]	0.30 [7.62]

REVISION HISTORY						
REV	ECN	DESCRIPTION	SIGN & DATE			
			BY	DATE	CHK	DATE
A	—	PRODUCTION RELEASE	JL	06/29/17	AM	06/29/17
B	—	UPDATED SPEC.	TN	08/31/2020	JL	08/31/2020



BOTTOM VIEW



FRONT VIEW

DC BIAS TABLE

DC BIAS (AMP)	L@1KHz (Pins: 1-2 & 3-4) (REF)
0	300uH
5	293uH
10	282uH
15	276uH
20	260uH

7 BUILD TO RoHS COMPLIANCE AND LEAD FREE.

6 LABEL PART NUMBER, REVISION AND DATE CODE

5 REMOVE INSULATION AND TIN LEADS, FLUSH WITH THE COIL EDGE
WIND COILS EVENLY SPACED AROUND THE CORE
4 CONSTRUCTION:

WEIGHT: 1773 GRAMS TYPICAL
INTERWINDING CAPACITANCE = 24pF TYP @ SRF
SRF = 5.3MHz TYPICAL
|Z| = 17 KILO-OHMS TYP @ SRF
RECOMMENDED AMBIENT OPERATING TEMP: -40°C TO 155°C
HI-POT TEST FOR WINDING TO CORE ISOLATION = 500VDC MIN.
MAX TEMP. RISE @ IDC 20 AMPS, LESS THAN 50°C WITH SOME AIR FLOW
DCR = 20 MILLI-OHMS MAX. PER WINDING
MAX. RATED CURRENT = 20 AMPS
INDUCTANCE @ DC BIAS: SEE TABLE ON THE RIGHT
INDUCTANCE = 300uH ± 15% @ 0 AMP DC BIAS, 1.0 KHz, 250mV

3 SPECIFICATIONS: @ 25°C:

2 WIRE: UL RECOGNIZED 200°C RATED MAGNET WIRE
CORE: HIGH TEMP. POWDERED TOROIDAL CORE

1 MATERIAL: UL RECOGNIZED 94V-0 FOR FLAMMABILITY, RATING CLASS H (180°C MIN.) REQUIRED

ANY TOLERANCE. THIS DIM. CAN VARY A LITTLE FROM PART TO PART.

"TYP" IN DIM. TOL. TABLE REFERS TO A NON-CRITICAL TYPICAL (AVERAGE) DIM. WITHOUT

NOTES: UNLESS OTHERWISE STATED, READ NOTES FROM BOTTOM UP.

CAGE CODE: 5DME2

CODE IDENT	MFG. P/N	DESCRIPTION	ITEM NO.
PARTS LIST			
AUTOCAD	X	COILWS COM, INC www.coilws.com	CWS Coil Winding Specialist. 353 West Grove Avenue Orange, CA 92865
SOLIDWORKS			
DRAWN	JL 2/8/04	TITLE: Differential & Common Mode Choke 300uH, 20 Amps	
CHECKED	AM 2/9/04		
ENGR.	KLC 3/5/04		
APPR.	KLC 3/6/04		
SIZE	DWG. NO.	CWS-1MF-11406	REV B
SCALE	2=1		SHEET 1 OF 1

UNLESS OTHERWISE SPECIFIED	
DIMENSIONING AND TOLERANCE PER ANSI Y14.5M	
ALL DIMENSIONS ARE IN INCHES AND [MILLIMETERS].	
TOLERANCE INCHES:	.XXX=±.005 .XX=±.015 $\angle=±0°30'$
TOLERANCE METRICS:	.XXX=±.127 .XX=±.38 $\angle=±0°30'$
ANGLE PROJECTION	
DO NOT SCALE DRAWING	

CAD-FILE: