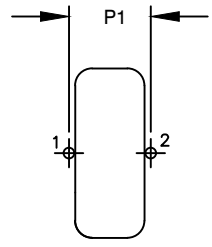
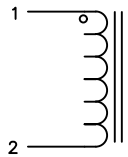
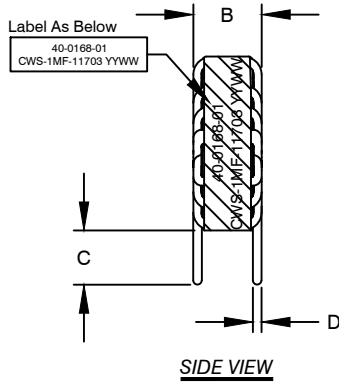
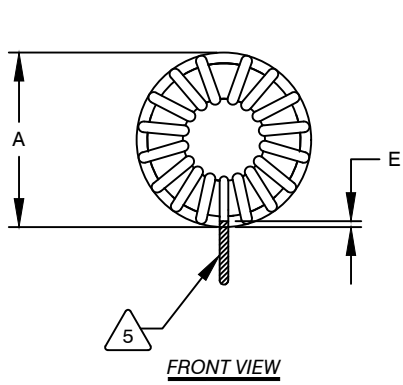


The information contained in this drawing is the sole property of CWS Coil Winding Specialist. Any reproduction in part or whole without written permission of CWS Coil Winding Specialist is prohibited.

DIMENSIONAL TOLERANCE					
A (OD) MAX	B (HGT) MAX	C (LEAD) MIN	D (LEAD OD) TYP	E MIN/MAX	P1 REF
2.65" [67.3]	1.00" [25.4]	.500" [12.70]	.071" [1.80]	.040-.060" [1.00-1.50]	.960" [24.38]

REVISION HISTORY						
REV	ECN	DESCRIPTION	SIGN & DATE			
			BY	DATE	CHK	DATE
A		INITIAL RELEASE	KLC	10/11/10	AK	10/11/10
A1		UPDATED SPEC.	TN	08/31/2020	JL	08/31/2020



DC BIAS TABLE

DC BIAS (AMP)	L@100KHz (REF)
0	345uH
2	344uH
4	341uH
6	335uH
8	327uH
10	318uH
12	309uH
14	298uH
16	285uH

7 BUILD TO RoHS COMPLIANCE AND LEAD FREE

6 USING A PERMANENT MARKING METHOD MARK PART NUMBER AND REVISION, IF APPLICABLE WRAP INDUCTOR WITH GLASS TAPE

5 VARNISH WITH HIGH TEMP. VARNISH TO THE CORE MUST REST FLAT ON PCB. LEADS MUST BE TANGENT FLUSH WITH THE COIL EDGE, AS SHOWN (I.E. COIL REMOVE INSULATION AND TIN LEADS 0.50 INCH

4 WIND COILS EVENLY SPACED AROUND THE CORE CONSTRUCTION:

WEIGHT: 300 GRAMS TYPICAL
 OPERATING TEMP. RANGE: -55°C TO +155°C
 HI-POT TEST FOR WINDING TO CORE ISOLATION = 1250 VDC 5 SEC
 INTERWINDING CAPACITANCE = 53pF TYP @ SRF
 SRF = 1.20MHz TYPICAL
 |Z| = 16.8 KILO-OHMS TYP @ SRF
 DCR = 32.0 MILLI-OHMS MAX.

3 CURRENT RATING: 16 AMPS; TEMP. RISE @ IDC LESS THAN 40°C WITH SOME AIRFLOW INDUCTANCE @ DC BIAS: SEE TABLE ON THE RIGHT INDUCTANCE = 330 uH ±10% @ LOW DC BIAS, 100 KHz, 250mV SPECIFICATIONS 25°C:

2 WIRE: UL RECOGNIZED 200°C RATED MAGNET WIRE CWS BYEMARK OR OTHER APPROVED PART CORE: POWDERED TOROIDAL CORE

1 RATING CLASS N (200 °C) REQUIRED MATERIAL: UL RECOGNIZED 94V-0 FOR FLAMMABILITY

ANY TOLERANCE. THIS DIM. CAN VARY A LITTLE FROM PART TO PART. "TYP" IN DIM. TOL. TABLE REFERS TO A NON-CRITICAL TYPICAL (AVERAGE) DIM. WITHOUT NOTES: UNLESS OTHERWISE SPECIFIED, READ NOTES FROM BOTTOM UP.

CAGE CODE: 5DME2

MOUNTING HOLES PATTERN

SCHEMATIC

CODE IDENT	MFG. P/N	DESCRIPTION	ITEM NO.
PARTS LIST			
AUTOCAD	X		
SOLIDWORKS			
DRAWN	KLC	10/11/10	COILWS COM, INC www.coilws.com CWS Coil Winding Specialist. 353 W Grove Ave Orange, CA 92865
CHECKED	AK	10/11/10	
ENGR.	KLC	10/11/10	
APPR.	KLC	10/11/10	
UNLESS OTHERWISE SPECIFIED			
DIMENSIONING AND TOLERANCE PER ANSI Y14.5M			
ALL DIMENSIONS ARE IN INCHES AND [MILLIMETERS].			
TOLERANCE INCHES:			
.XXX=±.005 .XX=±.015 \angle=±0°30'			
TOLERANCE METRICS:			
.XXX=±.127 .XX=±.38 \angle=±0°30'			
ANGLE PROJECTION			
DO NOT SCALE DRAWING			
TITLE:		POWER INDUCTOR, HIGH TEMP 330uH, 16 Amps, Horizontal	
SIZE	DWG. NO.	CWS-1MF-11703	
B		REV A1	
SCALE	2=1		SHEET 1 OF 1

CAD-FILE: