

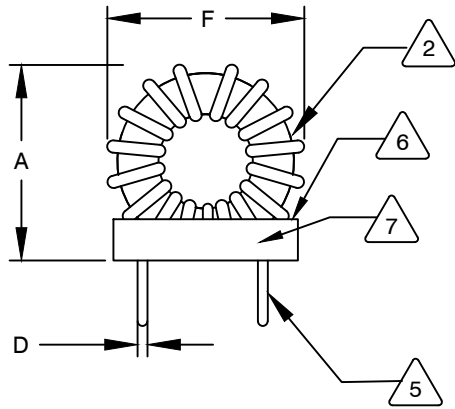
The information contained in this drawing is the sole property of CWS Coil Winding Specialist. Any reproduction in part or whole without written permission of CWS Coil Winding Specialist is prohibited.



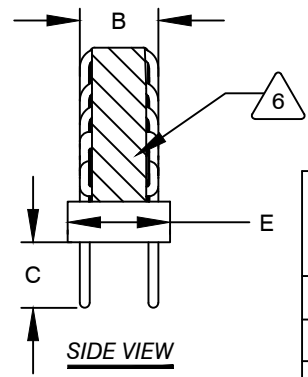
DIMENSIONAL TOLERANCES INCHES [MM]								
A	B	C	D	E	F	X	Y	
MAX	MAX	MIN	TYP	MAX	MAX	TYP	TYP	
2.20	1.42	0.50	0.08	1.73	2.05	1.33	1.26	
[55.88]	[36.00]	[12.70]	[2.05]	[44.00]	[52.00]	[33.70]	[32.10]	

REVISION HISTORY						
REV	ECN	DESCRIPTION	SIGN & DATE			
			BY	DATE	CHK	DATE
A		PRE-PRODUCTION RELEASE	JL	06/02/17	JLAU	06/02/17
A1		UPDATED SPEC.	TN	08/31/2020	JL	08/31/2020

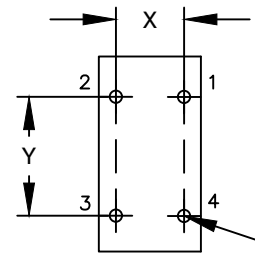
- 8 BUILD TO RoHS COMPLIANCE AND LEAD-FREE
- 7 MARK PART NUMBER, REVISION AND DATE CODE
- 6 POT AND CURE
REST FLAT ON POTTING HOUSING BEFORE EPOXY.
FLUSH WITH THE COIL EDGE AND COIL BODY MUST FULLY
- 5 REMOVE INSULATION AND TIN LEADS 0.50 INCH
WIND COILS EVENLY SPACED AROUND THE CORE
- 4 CONSTRUCTION:
WEIGHT: 266 GRAMS TYPICAL
HI-POT TEST FOR WINDING TO CORE ISOLATION = 500VDC MIN
OPERATING TEMP. RANGE: -40°C TO 155°C
CURRENT RATING : 25 AMPS, 40 °C TEMP. RISE WITH SOME AIRFLOW
DCR = 12.0 MILLI-OHMS MAX.
INTERWINDING CAPACITANCE = 11pF TYP @ SRF
|Z| = 7.75 kΩ TYP @ SRF
SRF = 4.9 MHz TYPICAL
INDUCTANCE @ DC BIAS: SEE TABLE ON THE RIGHT
TERMINAL 2 AND 3 ARE INTERNALLY CONNECTED
TERMINAL 1 AND 4 ARE INTERNALLY CONNECTED
INDUCTANCE = 95uH ±10% @ 0 ADC BIAS, 1 KHz, 250mV
- 3 SPECIFICATIONS @ 25°C:
WIRE: UL RECOGNIZED 200°C RATED MAGNET WIRE
EPOXY: UL RECOGNIZED RATING
- 2 CORE: COATED POWDERED TOROIDAL CORE
RATING CLASS H (180°C MIN.) REQUIRED
- 1 MATERIAL: UL RECOGNIZED 94V-0 FOR FLAMMABILITY
ANY TOLERANCE. THIS DIM. CAN VARY A LITTLE FROM PART TO PART.
"TYP" IN DIM. TOL. TABLE REFERS TO A NON-CRITICAL TYPICAL (AVERAGE) DIM. WITHOUT
NOTES: UNLESS OTHERWISE SPECIFIED, READ NOTES FROM BOTTOM UP.
CAGE CODE: 5DME2



FRONT VIEW

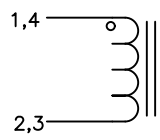


SIDE VIEW



MOUNTING HOLES PATTERN

DC BIAS TABLE	
DC BIAS (AMP)	L@1KHz (REF)
0	95uH
5	95uH
10	92uH
15	90uH
20	85uH
25	75uH



SCHEMATIC

UNLESS OTHERWISE SPECIFIED
DIMENSIONING AND TOLERANCE PER ANSI Y14.5M
ALL DIMENSIONS ARE IN INCHES AND [MILLIMETERS].
TOLERANCE INCHES:
.XXX=±.005 .XX=±.015 $\angle = \pm 0^{\circ}30'$
TOLERANCE METRICS:
.XXX=±.127 .XX=±.38 $\angle = \pm 0^{\circ}30'$
ANGLE PROJECTION
DO NOT SCALE DRAWING

CODE IDENT	MFG. P/N	DESCRIPTION	ITEM NO.	
PARTS LIST				
AUTOCAD	X	COILWS COM, INC www.coilws.com	CWS Coil Winding Specialist. 353 West Grove Ave. Orange, CA 92865	
SOLIDWORKS				
SIGN	DATE	TITLE: Toroidal Power Chokes Toroid Inductor		
DRAWN	JL 06/02/17			
CHECKED	JLAU 06/02/17			
ENGR.	KSUM 06/02/17			
APPR.	JLAU 06/02/17	SIZE	DWG. NO.	REV
		B	CWS-1MF-11805	A1
		SCALE	NOT_TO_SCALE	SHEET 1 OF 1