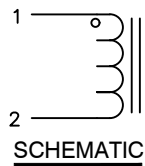
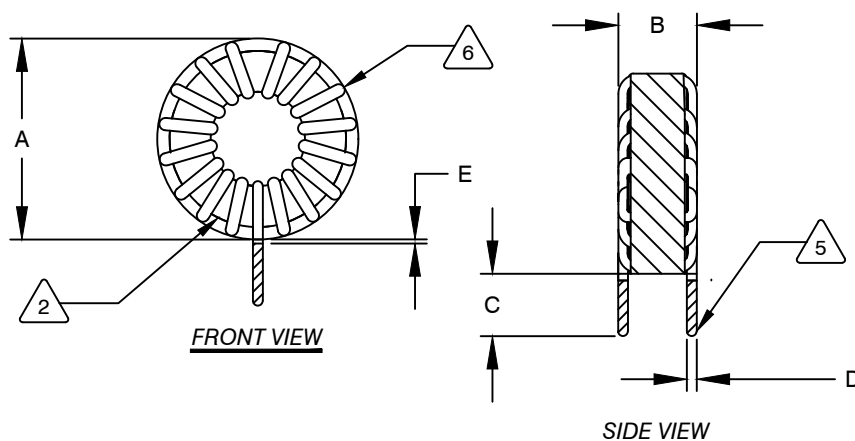


The information contained in this drawing is the sole property of CWS Coil Winding Specialist. Any reproduction in part or whole without written permission of CWS Coil Winding Specialist is prohibited.

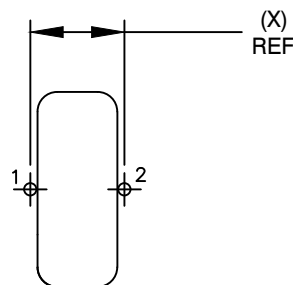


| DIMENSIONAL TOLERANCES<br>INCHES [MM] |                 |                 |                |                              |                 |
|---------------------------------------|-----------------|-----------------|----------------|------------------------------|-----------------|
| A<br>MAX                              | B<br>MAX        | C<br>MIN        | D<br>TYP       | E<br>MIN/MAX                 | X<br>REF        |
| 1.65<br>[42.00]                       | 0.67<br>[17.00] | 0.50<br>[12.70] | 0.08<br>[2.00] | +0.00/-2.00<br>[+0.00/-0.08] | 0.60<br>[15.00] |

| REVISION HISTORY |     |                    |             |            |      |            |
|------------------|-----|--------------------|-------------|------------|------|------------|
| REV              | ECN | DESCRIPTION        | SIGN & DATE |            |      |            |
|                  |     |                    | BY          | DATE       | CHK  | DATE       |
| A                | —   | PRODUCTION RELEASE | AK          | 12/31/11   | JLAU | 12/31/11   |
| B                | —   | UPDATED SPEC.      | TN          | 08/31/2020 | JL   | 08/31/2020 |



| DC BIAS (AMP) | L@100KHz (REF) |
|---------------|----------------|
| 0             | 12.0uH         |
| 5             | 12.0uH         |
| 10            | 11.8uH         |
| 15            | 11.6uH         |
| 20            | 11.4uH         |
| 25            | 11.0uH         |



- 7 BUILD TO RoHS COMPLIANCE AND LEAD FREE.
- 6 MARK PART NUMBER, REVISION AND DATE CODE  
WRAP INDUCTOR WITH 3M # 79 OR EQUAL
- 5 (I.E. COIL MUST REST FLAT ON PCB). LEADS MUST BE TANGENT TO THE CORE  
REMOVE INSULATION AND TIN LEADS 0.5 INCH, FLUSH WITH THE COIL EDGE
- 4 WIND COILS EVENLY SPACED AROUND THE CORE  
CONSTRUCTION:  
WEIGHT: 56 GRAMS TYPICAL  
INTERWINDING CAPACITANCE = 22pF TYP @ SRF  
SRF > 10MHz TYPICAL  
|Z| = 754 OHMS TYP @ SRF  
RECOMMENDED AMBIENT OPERATING TEMP: -40°C TO 155°C  
HI-POT TEST FOR WINDING TO CORE ISOLATION = 1250 VDC, 5 SEC.  
CURRENT RATING : 25 AMPS, 40°C TEMP. RISE WITH SOME AIR FLOW  
DCR = 7.0 MILLI-OHMS MAX.  
INDUCTANCE @ DC BIAS: SEE TABLE ON THE RIGHT  
INDUCTANCE = 12uH±20% @ 0 AMP DC BIAS, 100 KHz, 100mV
- 3 SPECIFICATIONS: @ 25°C:
- 2 WIRE: UL RECOGNIZED 200°C RATED MAGNET WIRE  
CORE: POWDERED TOROIDAL CORE, CWS BYTEMARK OR OTHER APPROVED PART
- 1 MATERIAL: UL RECOGNIZED 94V-0 FOR FLAMMABILITY, RATING CLASS H (180°C MIN.) REQUIRED

ANY TOLERANCE. THIS DIM. CAN VARY A LITTLE FROM PART TO PART.  
"TYP" IN DIM. TOL. TABLE REFERS TO A NON-CRITICAL TYPICAL (AVERAGE) DIM. WITHOUT  
NOTES: UNLESS OTHERWISE STATED, READ NOTES FROM BOTTOM UP.  
CAGE CODE: 5DME2

UNLESS OTHERWISE SPECIFIED  
DIMENSIONING AND TOLERANCE PER ANSI Y14.5M  
ALL DIMENSIONS ARE IN INCHES AND [MILLIMETERS].  
TOLERANCE INCHES:  
.XXX=±.005 .XX=±.015 <math>\angle = \pm 0^{\circ}30'</math>  
TOLERANCE METRICS:  
.XXX=±.127 .XX=±.38 <math>\angle = \pm 0^{\circ}30'</math>  
ANGLE PROJECTION   
DO NOT SCALE DRAWING

| CODE IDENT        | MFG. P/N      | DESCRIPTION   | ITEM NO.  |
|-------------------|---------------|---|---|
| <b>PARTS LIST</b> |               |   |   |
| AUTOCAD           | X             | <b>COILWS COM, INC</b><br>www.coilws.com                  | CWS Coil Winding Specialist.<br>353 West Grove Avenue<br>Orange, CA 92865 |
| SOLIDWORKS        |               |   |   |
| SIGN              | DATE          | TITLE: TOROIDAL POWER INDUCTOR<br>12uH, 25 Amps, Vertical |   |
| DRAWN             | AK 12/31/11   |   |   |
| CHECKED           | JLAU 12/31/11 |   |   |
| ENGR.             | KSUM 12/31/11 |   |   |
| APPR.             | JLAU 12/31/11 |   |   |
| SIZE              | DWG. NO.      | CWS-1MF-12005   | REV   |
| B                 |               |   | B   |
| SCALE             | 2=1           |   | SHEET 1 OF 1  |

CAD-FILE: