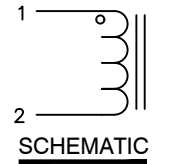
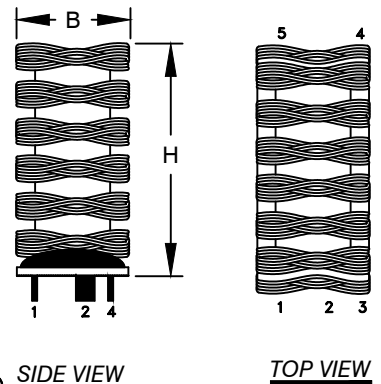
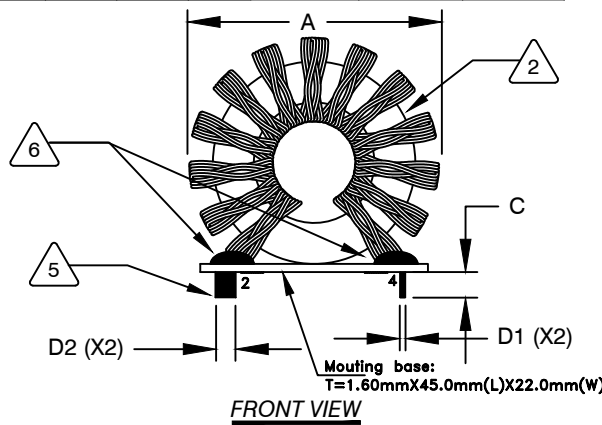


The information contained in this drawing is the sole property of CWS Coil Winding Specialist. Any reproduction in part or whole without written permission of CWS Coil Winding Specialist is prohibited.



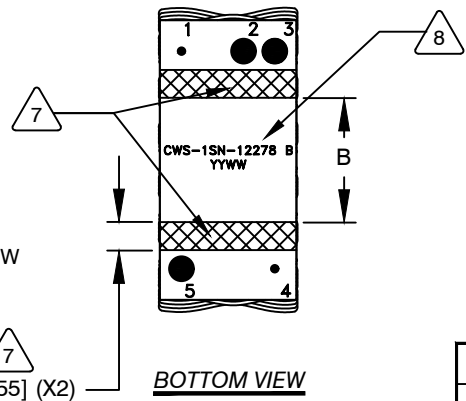
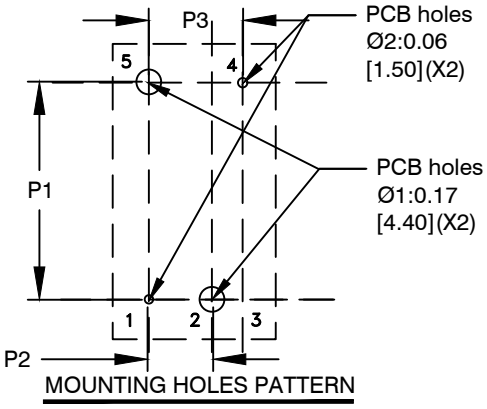
DIMENSIONAL TOLERANCES INCHES [MM]								
A MAX	B MAX	C	H	D1 TYP	D2	P1	P2	P3
2.03 [51.50]	0.93 [23.50]	0.20±0.04 [5.00±1.00]	1.87 [47.50]	0.04 [1.00]	0.16 [4.10]	1.38±0.02 [35.00±0.50]	0.40±0.02 [10.00±0.50]	0.60±0.02 [15.00±0.50]

REVISION HISTORY						
REV	ECN	DESCRIPTION	SIGN & DATE			
			BY	DATE	CHK	DATE
B	-	INITIAL DRAWING RELEASE	TN	03/06/21	JL	03/06/21



DC BIAS TABLE

DC BIAS (AMP)	L@10KHz (REF)
0	13.7uH
5	13.4uH
10	13.0uH
15	12.5uH
20	12.0uH
25	11.0uH
30	10.5uH
35	10.0uH
40	9.0uH
50	8.0uH



- 9 BUILD TO RoHS COMPLIANCE AND LEAD FREE.
- 8 MARK PART NUMBER, REVISION AND DATE CODE WHERE SHOWN
- 7 APPLY 2 STRIPES OF MARGIN TAPE WHERE SHOWN
- 6 APPLY EPOXY TO HOLD COIL WINDINGS AND CORE TO BASE
- 5 REMOVE INSULATION AND TIN LEADS AND TRIM LEAD LENGTHS PER DIM.
- 4 WIND COILS EVENLY SPACED AROUND THE CORE CONSTRUCTION:
WEIGHT: 105 GRAMS TYPICAL
RECOMMENDED AMBIENT OPERATING TEMP: -40°C TO 155°C
SRF: GREATER THAN 10MHz TYPICAL
HI-POT TEST FOR WINDING TO CORE ISOLATION = 1KVAC, 2mA, 2s.
INDUCTOR CURRENT RATING : 40 AMPS, 40°C TEMP. RISE WITH SOME AIR FLOW
DCR (PINS: 2 & 5) = 3.00 MILLI-OHMS MAX.
INDUCTANCE @ DC BIAS: SEE TABLE ON THE RIGHT
INDUCTANCE (PINS: 2 & 5) = 12.5 - 14.6uH @ 10KHz, 250mV, 0ADC.
- 3 SPECIFICATIONS: @ 25°C:
WIRE: UL RECOGNIZED 200°C RATED MAGNET WIRE
CORE: POWDERED TOROIDAL CORE
- 2 MATERIAL: UL RECOGNIZED 94V-0 FOR FLAMMABILITY, RATING CLASS H (180°C MIN.) REQUIRED

ANY TOLERANCE. THIS DIM. CAN VARY A LITTLE FROM PART TO PART.
"TYP" IN DIM. TOL. TABLE REFERS TO A NON-CRITICAL TYPICAL (AVERAGE) DIM. WITHOUT
NOTES: UNLESS OTHERWISE STATED, READ NOTES FROM BOTTOM UP.
CAGE CODE: 5DME2

UNLESS OTHERWISE SPECIFIED	
DIMENSIONING AND TOLERANCE PER ANSI Y14.5M	
ALL DIMENSIONS ARE IN INCHES AND [MILLIMETERS].	
TOLERANCE INCHES: .XXX=±.005 .XX=±.015 $\angle=±0°30'$	
TOLERANCE METRICS: .XXX=±.127 .XX=±.38 $\angle=±0°30'$	
ANGLE PROJECTION	
DO NOT SCALE DRAWING	

CODE IDENT	MFG. P/N	DESCRIPTION	ITEM NO.
PARTS LIST			
AUTOCAD	X		
SOLIDWORKS			
SIGN	DATE	COILWS COM, INC www.coilws.com	CWS Coil Winding Specialist. 353 W. Grove Ave. Orange, CA 92865
DRAWN	TN 03/06/21	TITLE: TOROIDAL POWER INDUCTOR 12.5-14.6uH, Vertical	
CHECKED	JM 03/06/21		
ENGR.	JL 03/06/21		
APPR.	JL 03/06/21		
SIZE	DWG. NO.	CWS-1SN-12278	REV B
SCALE	2=1		SHEET 1 OF 1