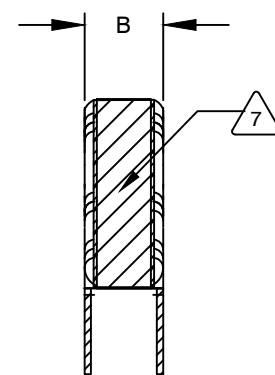
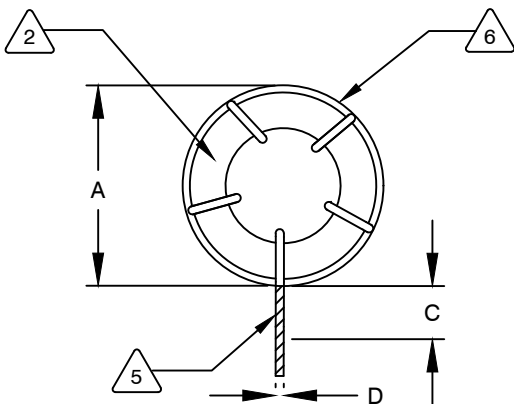


The information contained in this drawing is the sole property of CWS Coil Winding Specialist. Any reproduction in part or whole without written permission of CWS Coil Winding Specialist is prohibited.



DIMENSIONAL TOLERANCES INCHES [MM]				
A MAX	B MAX	C REF	D REF	X TYP
0.94 [23.80]	0.50 [12.70]	0.50 [12.70]	0.06 [1.61]	0.42 [10.60]

REVISION HISTORY						
REV	ECN	DESCRIPTION	SIGN & DATE			
			BY	DATE	CHK	DATE
A	—	INITIAL DRAWING RELEASE	TN	10/17/2020	JL	10/17/2020

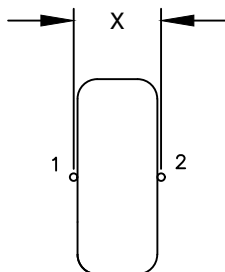


DC BIAS TABLE

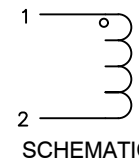
DC BIAS (AMP)	L@ 1KHz (REF)
0	0.7uH
5	0.7uH
10	0.7uH
12	0.6uH

FRONT VIEW

SIDE VIEW



MOUNTING HOLES PATTERN



SCHEMATIC

8 BUILD TO RoHS COMPLIANCE AND LEAD FREE.

7 MARK PART NUMBER, REVISION AND DATE CODE

6 WRAP INDUCTOR WITH MYLAR TAPE

5 REMOVE INSULATION AND TIN LEADS 0.50 INCH.

4 WIND COILS EVENLY SPACED AROUND THE CORE CONSTRUCTION:

WEIGHT: 14 GRAMS TYPICAL

RECOMMENDED AMBIENT OPERATING TEMP: -40°C TO 125°C

HI-POT TEST FOR WINDING TO CORE ISOLATION = 500VDC MIN.

INDUCTANCE AT DC BIAS: SEE TABLE ON THE RIGHT.

DCR = 2.50 MILLI-OHMS MAX.

INDUCTANCE = 0.65uH ±20% @ 0 AMP DC BIAS, 1.0 KHz, 250mV

3 SPECIFICATIONS: @ 25°C:

2 WIRE: UL RECOGNIZED 200°C RATED MAGNET WIRE
CORE: POWDER TOROIDAL CORE

1 MATERIAL: UL RECOGNIZED 94V-0 FOR FLAMMABILITY, RATING CLASS B (130°C MIN.) REQUIRED

ANY TOLERANCE. THIS DIM. CAN VARY A LITTLE FROM PART TO PART.

"TYP" IN DIM. TOL. TABLE REFERS TO A NON-CRITICAL TYPICAL (AVERAGE) DIM. WITHOUT

NOTES: UNLESS OTHERWISE STATED, READ NOTES FROM BOTTOM UP.

CAGE CODE: 5DME2

UNLESS OTHERWISE SPECIFIED	
DIMENSIONING AND TOLERANCE PER ANSI Y14.5M	
ALL DIMENSIONS ARE IN INCHES AND [MILLIMETERS].	
TOLERANCE INCHES: .XXX=±.005 .XX=±.015 $\angle = \pm 0^{\circ}30'$	
TOLERANCE METRICS: .XXX=±.127 .XX=±.38 $\angle = \pm 0^{\circ}30'$	
ANGLE PROJECTION	
DO NOT SCALE DRAWING	

CODE IDENT	MFG. P/N	DESCRIPTION	ITEM NO.
PARTS LIST			
AUTOCAD	X		
SOLIDWORKS		COILWS COM, INC www.coilws.com	CWS Coil Winding Specialist. 353 W. Grove Ave. Orange, CA 92865
DRAWN	TN	DATE	10/17/2020
CHECKED	JM	DATE	10/17/2020
ENGR.	JL	DATE	10/17/2020
APPR.	JL	DATE	10/17/2020
TITLE:		TOROIDAL INDUCTOR 0.65uH, 15 Amps, Vertical	
SIZE	DWG. NO.	REV	
B	CWS-1TC-11327	A	
SCALE	2=1	SHEET	1 OF 1

CAD-FILE: