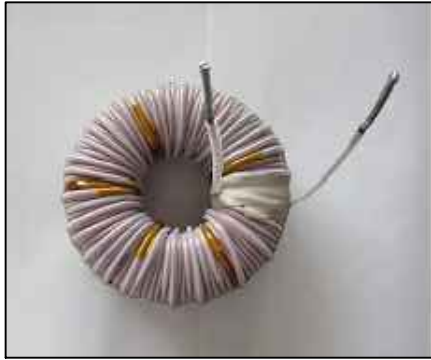


The information contained in this drawing is the sole property of CWS Coil Winding Specialist.  
Any reproduction in part or whole without written permission of CWS Coil Winding Specialist is prohibited.

REVISION HISTORY						
REV	ECN	DESCRIPTION	SIGN & DATE			
			BY	DATE	CHK	DATE
A		INITIAL PRODUCTION RELEASE	AM	3/28/18	JLAU	3/28/18
A1		UPDATED SPEC. AND INITIAL DRAWING RELEASE	TN	11/07/2020	JL	11/07/2020



9 BUILD TO RoHS COMPLIANCE AND LEAD FREE

8 LABEL PART NUMBER AND REVISION  
WRAP INDUCTOR WITH GLASS TAPE  
VARNISH PART AND CURE

7 WRAP GLASS TAPE TIGHTLY AROUND FLYING LEADS TO HOLD THEM

TIN LEADS TO SPECIFIED DIM.  
5 REMOVE INSULATION AND TEFLON SLEEVING

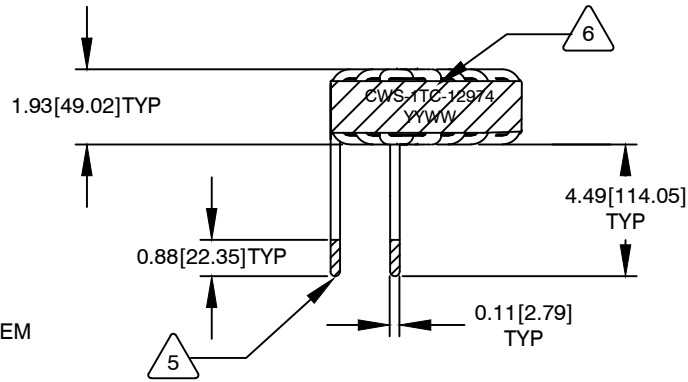
4 WIND COIL EVENLY SPACED  
CONSTRUCTION:

WEIGHT: 1225 GRAMS TYPICAL  
HI-POT TEST FOR WINDING TO CORE ISOLATION = 1500Vrms  
OPERATING TEMP. RANGE = 0°C TO 40°C  
TEMPERATURE RISE APPROX. 28 °C WITH SOME AIR FLOW  
INTERWINDING CAPACITANCE = 87pF TYP @ SRF  
|Z| = 391 KILO-OHMS TYP. @ SRF  
SRF = 682.4KHz TYPICAL  
DCR = 193 MILLI-OHMS TYPICAL  
INDUCTANCE = 600uH ±5% @ 0A DC BIAS, 40 KHz±3KHz, 250mV  
3 SPECIFICATIONS @ 25°C:

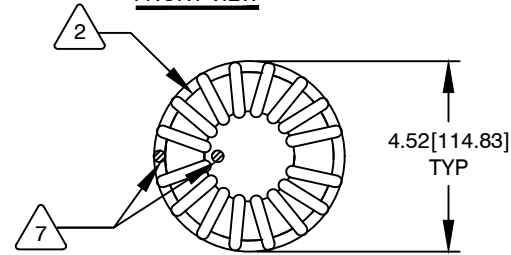
VARNISH DOLPH OR EQUIVALENT  
WIRE: UL RECOGNIZED LITZ WIRE  
2 CORE: POWDERED TOROIDAL CORE

1 RATING CLASS B (150°C MIN.) REQUIRED  
MATERIAL: UL RECOGNIZED 94V-0 FOR FLAMMABILITY

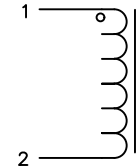
ANY TOLERANCE. THIS DIM. CAN VARY A LITTLE FROM PART TO PART.  
"TYP" IN DIM. TOL. REFERS TO A NON-CRITICAL TYPICAL (AVERAGE) DIM. WITHOUT  
NOTES: UNLESS OTHERWISE SPECIFIED, READ NOTES FROM BOTTOM UP.  
CAGE CODE: 5DME2



FRONT VIEW



BOTTOM VIEW



SCHEMATIC

CODE IDENT	MFG. P/N	DESCRIPTION	ITEM NO.
<b>PARTS LIST</b>			
AUTOCAD	X	<b>COILWS COM, INC</b> www.coilws.com	CWS Coil Winding Specialist. 353 W Grove Ave Orange, CA 92865
SOLIDWORKS			
DRAWN	TN 11/07/2020	TITLE: <b>Resonant Inductor 600 uH</b>	
CHECKED	JL 11/07/2020		
ENGR.	JL 11/07/2020		
APPR.	JL 11/07/2020		
UNLESS OTHERWISE SPECIFIED		SIZE	DWG. NO.
DIMENSIONING AND TOLERANCE PER ANSI Y14.5M ALL DIMENSIONS ARE IN INCHES AND [MILLIMETERS]. TOLERANCE INCHES: .XXX=±.005 .XX=±.015 <math>\angle</math>=±0°30' TOLERANCE METRICS: .XXX=±.127 .XX=±.38 <math>\angle</math>=±0°30'		<b>B</b>	CWS-1TC-12974
ANGLE PROJECTION		SCALE	REV
DO NOT SCALE DRAWING		<b>2=1</b>	<b>A1</b>
			SHEET 1 OF 1