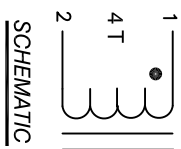
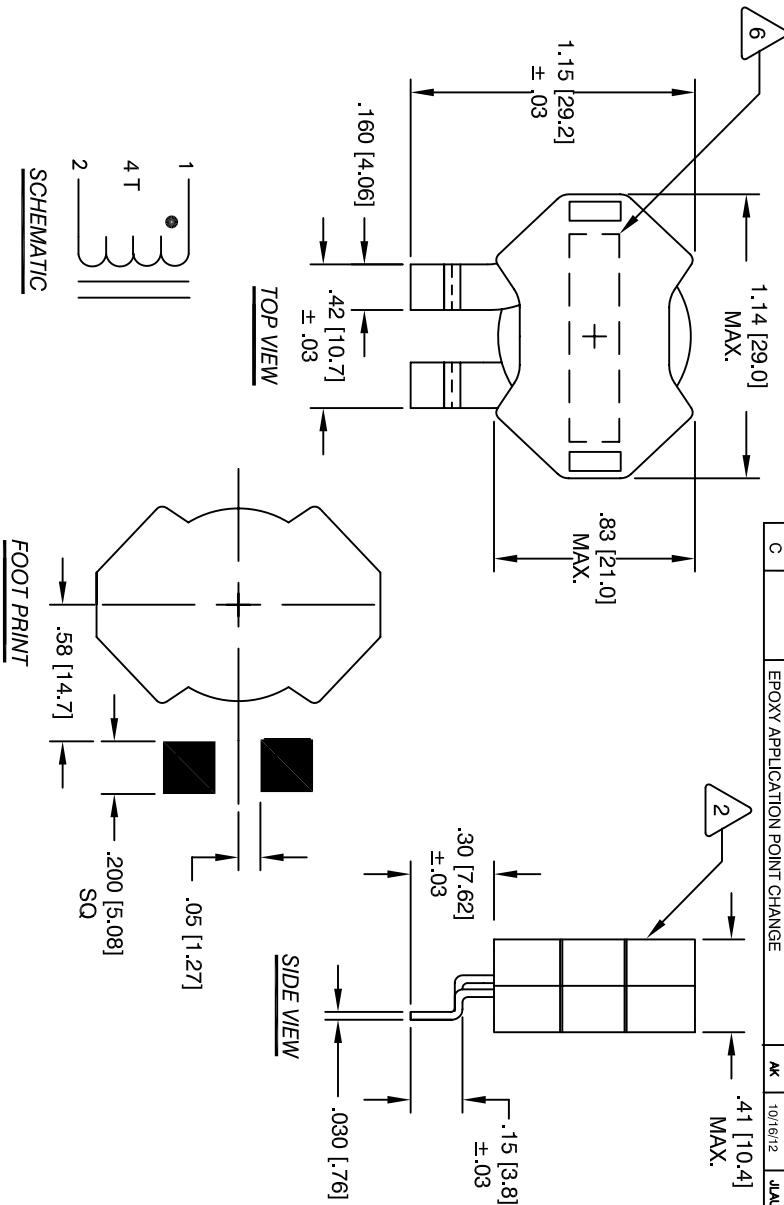


REVISION HISTORY

REV	ECN	DESCRIPTION	BY	DATE	CHK	DATE
A		PRODUCTION RELEASE	TKK	6/25/05	JLJU	6/25/05
B		REVISE DIMENSION		12/5/08		12/5/08
C		EPOXY APPLICATION POINT CHANGE	AK	10/16/12	JLJU	10/16/12



- 7 BUILT TO ROHS COMPLIANCE AND LEAD FREE.
- 6 WHERE SHOWN, USING A PERMANENT MARKING METHOD MARK PART NUMBER AND REVISION
- 5 CO-PLANARITY: CORE SURFACE TO LEADS WITHIN .005 INCH
- 300V RMS, WINDING TO CORE DIELECTRIC STRENGTH (2 SECONDS, 5 mA MAX.) =
- 4 HELIX WINDING INSULATION:
TIME OVER 180° C = <1 MINUTE
PEAK TEMP : 240° C
SMT REFLOW CONDITIONS: RAMP RATE 1°/C/ SEC MAX.
CURRENT RATING = 40 AMPS.
DCR = 1.45 MILL-OHM MAX. @ 25 °C
DC BIAS: 5.2 uH MIN @ 10 ADC
L = 7.5 uH +/-10%, 100 KHZ, 0.25 Vrms; 3.61 ADC
- 3 SPECIFICATIONS @ 25°c
- 2 WIRE: 200°C MIN. RATING HELICAL WOUND MAGNET WIRE
CWS BYTEMARK OR OTHER APPROVED PART
CORE: GAPPED RM10 FERRITE
- 1 RATING OF 200°C. REQUIRED
MATERIAL: UL RECOGNIZED 94V-0 FOR FLAMMABILITY

NOTES: UNLESS OTHERWISE SPECIFIED, PLANAR INDUCTOR.
READ NOTES FROM BOTTOM TO TOP.

QTY	CODE IDENT	MFQ. P/N	DESCRIPTION	ITEM NO.
			PARTS LIST	
	AUTOCAD	X		
	SOLIDWORKS			
	DRWNN	TKK	DATE	
	CHKD	JLJU	6/25/05	
	ENGR	KSUM	6/25/05	
	APPR	JLJU	6/25/05	
	SIZE	DMG. NO.		
	B			
	SCALE	2=1		
	SHEET	1	OF	1

UNLESS OTHERWISE SPECIFIED
DIMENSIONING AND TOLERANCE PER ANSI Y14.5M
ALL DIMENSIONS ARE IN INCHES
AND [MILLIMETERS].
TOLERANCE INCHES: ϕ = ±0.30
XXX = ±.005 XX = ±.015 ϕ = ±0.30
XXX = ±.127 XX = ±.25

DO NOT SCALE DRAWING

sales@coilws.com
www.coilws.com
Coil Winding Specialist, Inc.
353 W. GROVE AVE
ORANGE, CA 92865

TITLE:
High Current Output Choke
40 Amps Max

CWS-38366