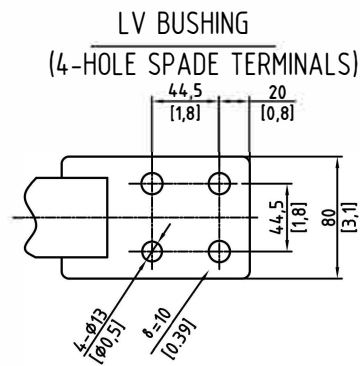
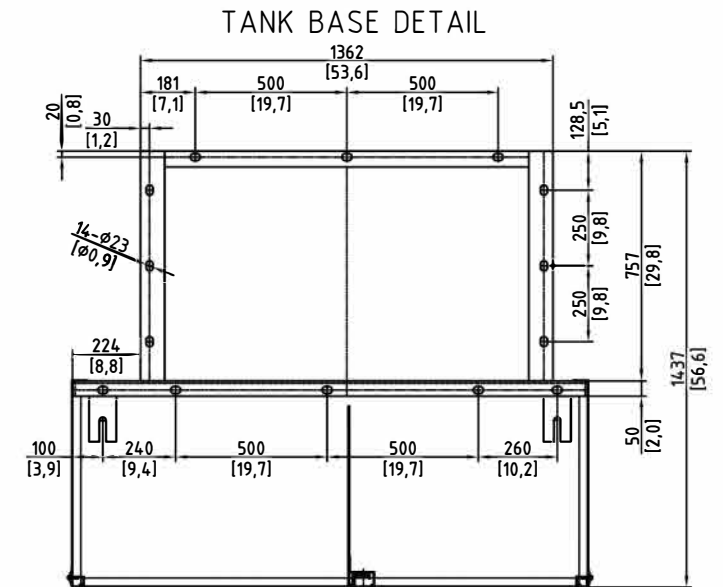
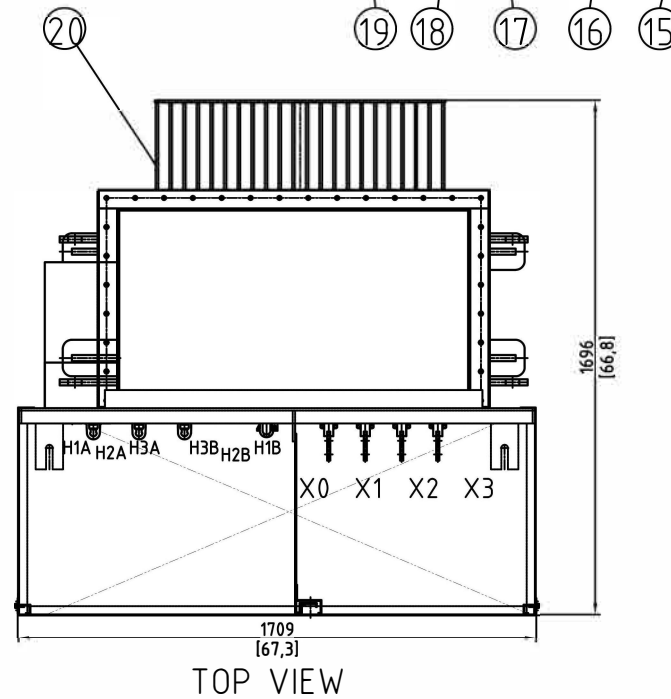
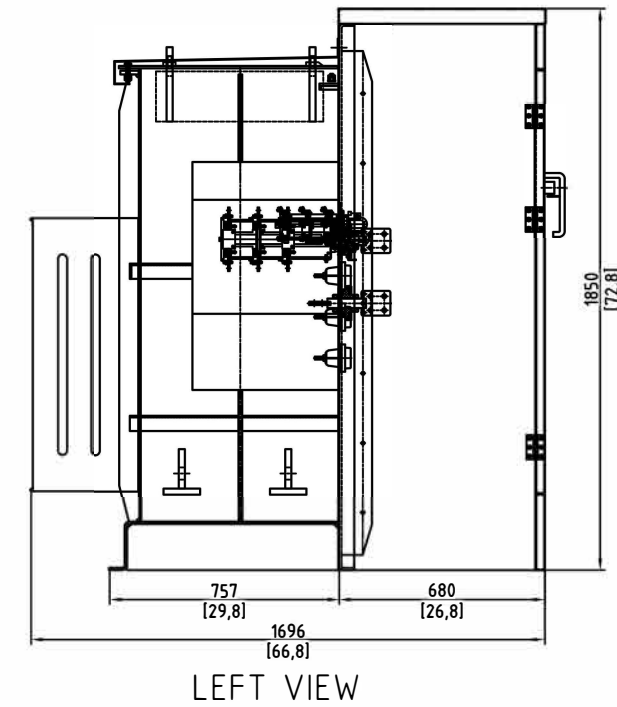
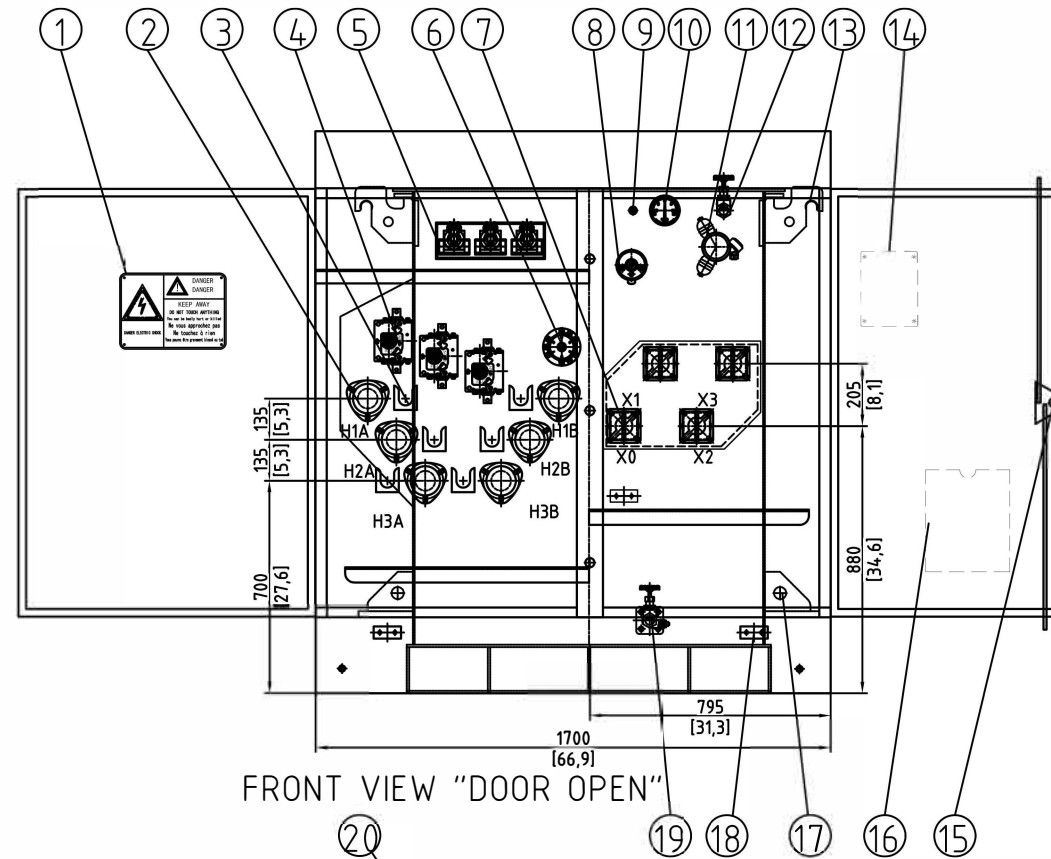


ITEM	DESCRIPTION	QTY
1	WARNING DECAL	1
2	15kV 200A BUSHING WELL WITH REMOVABLE STUD	6
3	PARKING STAND	6
4	2-POSITION LOADBREAK SWITCH (15KV, 630A)	3
5	BAYONET FUSE HOLDER/BAYONET FUSE	3
6	2 - 2.5% TAPS ABOVE AND 2 - 2.5% TAPS BELOW NOMINAL	1
7	0.39" COPPER STUD WITH 4-HOLE SCREW-ON SPADE BUSHINGS	4
8	THERMOMETER, DIAL-TYPE WITH ALARM CONTACT	1
9	PRESSURE RELIEF DEVICE, 10PSI 35 SCFM	1
10	PRESSURE/VACUUM GAUGE WITH ALARM CONTACT	1
11	LIQUID LEVEL GAUGE WITH ALARM CONTACT	1
12	OIL FILL 1"	1
13	LIFTING LUG	4
14	NAMEPLATE	1
15	PENTA-HEAD CABINET DOOR BOLTS	1
16	DATA BOX	1
17	JACKING LUG	1
18	GROUND PAD	3
19	DRAIN VALVE (1") WITH SAMPLER IN LV COMPARTMENT	1
20	CORRUGATED SHEET	1
21	CURRENT-LIMITING FUSES	3

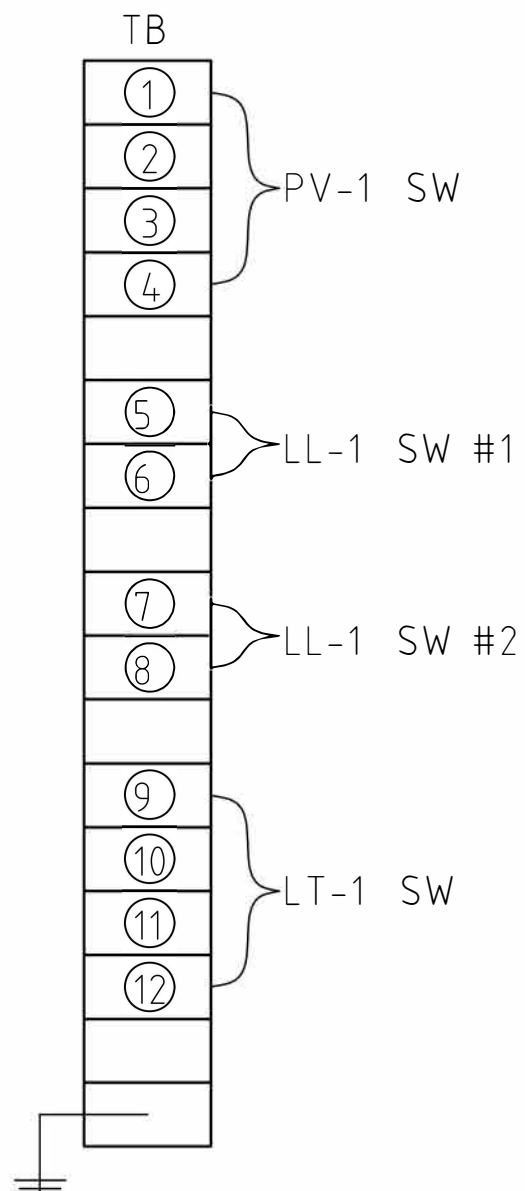


TECHNICAL DATA		
RATING	500	kVA
H.V	12470±2x2.5%	V
L.V	480	V
FREQUENCY	60	Hz
VECTOR GROUP	Dyn11	
WINDING MATERIAL	COPPER	
LIQUID MATERIAL	FR3	
BIL HIGH VOLTAGE	95	kV
BIL LOW VOLTAGE	30	kV
COOLING CLASS	KNAN	
EFFICIENCY	99.35	%
NO LOAD LOSS	570	W
LOAD LOSS	4530	W
IMPEDANCE	4.35-5.75%	
K-FACTOR	-	
COLOR	MUNSELL 7GY3.29/1.5	

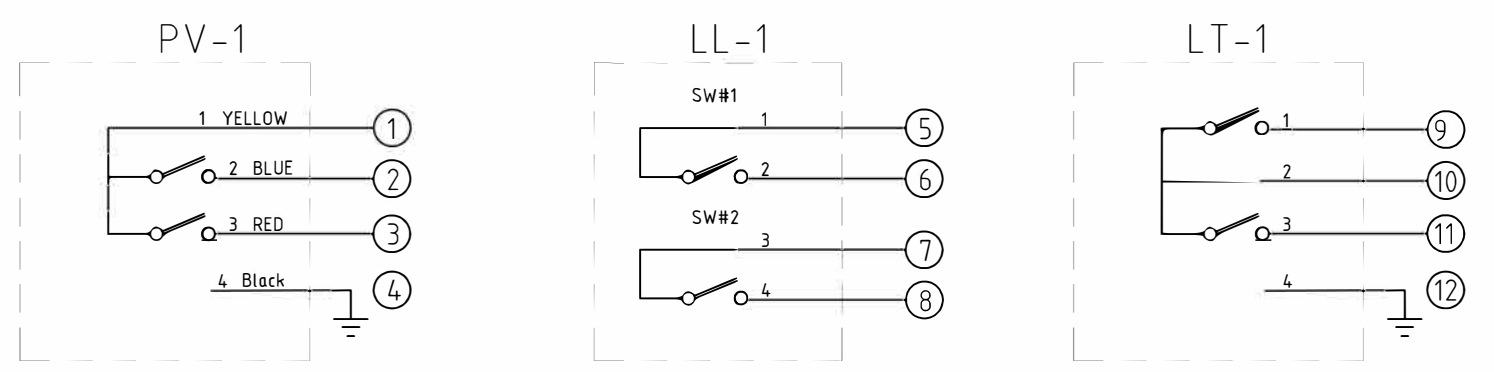
PHYSICAL DATA		
TOTAL OIL VOLUME	911/241	L/GAL
TOTAL OIL WEIGHT	820/1808	Kg/LB
CORE & COIL WEIGHT	1140/2513	Kg/LB
TANK & FITTINGS WEIGHT	760/1675	Kg/LB
TOTAL WEIGHT	2720/5996	Kg/LB

REVISIONS

3PHASE-500KVA/12.47KV/0.48					Coil Winding Specialist Inc 353 West Grove Ave, Orange, CA 92865		
DRAWN	CHECKED	CHECKED		APPROVED	FIRST ANGLE PROJECTION	SCALE	1
MARCH 20TH, 2025					CWS-500KVA3P-12.47-480		
					500 KVA THREE PHASE, 60 HZ 12,470V TO 277/480V. OIL FILLED		
							REV. NO. A



-USE COOPER CONDUCTORS ONLY,#22-10 AWG
 -TB SCREW TIGHTENING TORQUE 13.2 IN-LB



PV-1 PRESSURE Vacuum Gauge (YZXC-100Z)
 CONTACT 1: YELLOW (COMMON WIRE)
 CONTACT 2: BLUE (FIRST UPPER LIMIT)
 CONTACT 3: RED (SECOND UPPER LIMIT)
 CONTACT 4: BLACK (EARTH)

LL-1 LIQUID LEVEL GAGE (YZF-90 TH)
 SW #1 OPERATES ABOVE HIGH OIL LEVEL
 SW #2 OPERATES BELOW LOW OIL LEVEL

LT-1 LIQUID TEMPERATURE GAGE (BWPk-802-2)
 CONTACT 1: FIRST UPPER LIMIT (RECOMMENDED 55°C)
 CONTACT 2: COMMON WIRE
 CONTACT 3: SECOND UPPER LIMIT (RECOMMENDED 90°C)
 CONTACT 4: EARTH

LEGEND

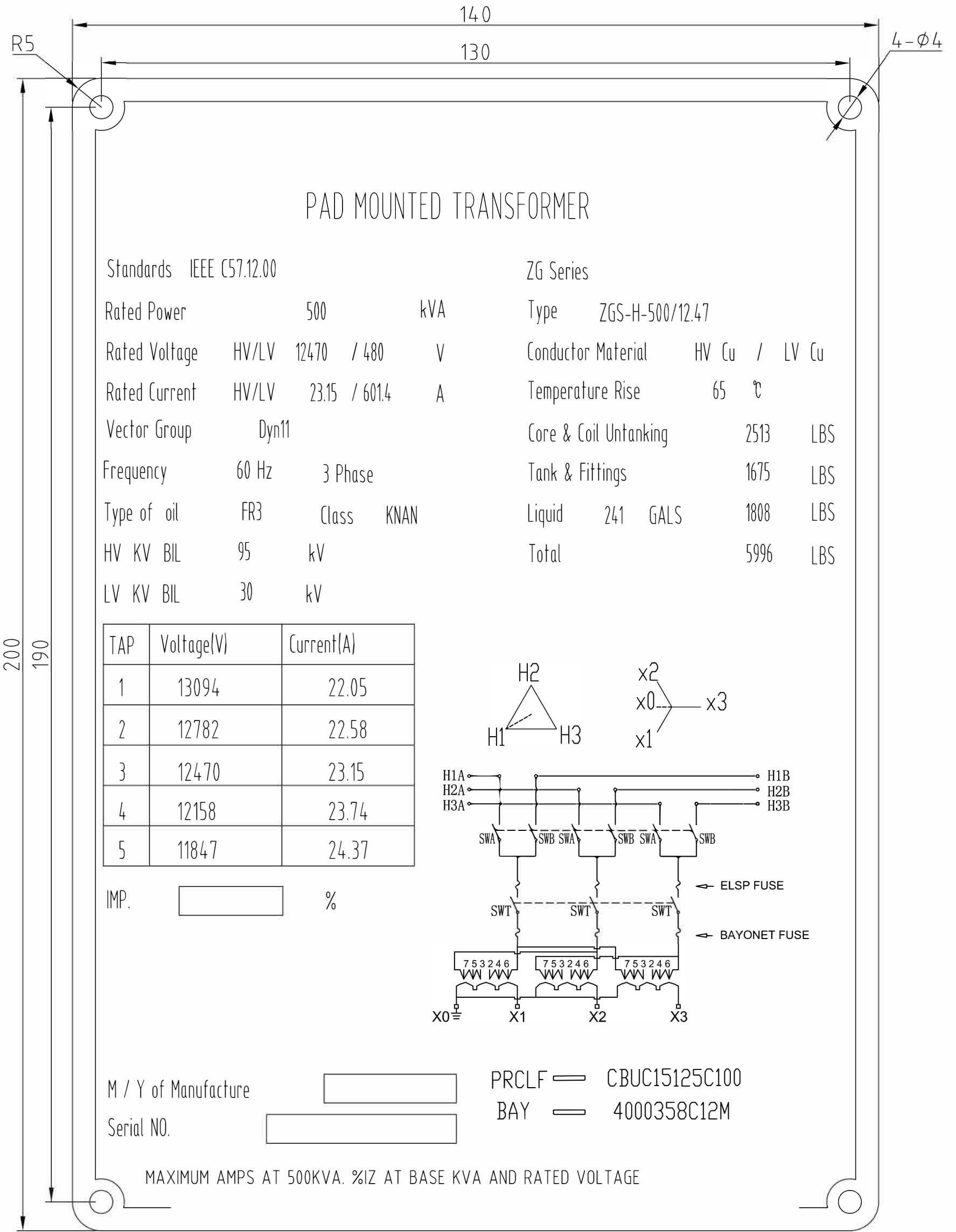
- INDICATES PREWIRED DEVICE
- INDICATES REMOTE DEVICE
- INDICATES WIRE HEAT SHRINK NUMBER LABEL
- INDICATES TERMINAL BLOCK CONNECTION
- INDICATES INTRINSICALLY SAFE TERM BLOCK CONN
- INDICATES RELAY TERM AND #
- INDICATES SPLICE
- INDICATES NORMALLY CLOSED CONTACT (NC)
- INDICATES NORMALLY OPEN CONTACT (NO)
- INDICATES CUSTOMER CONNECTION
- POLARITY MARK
- INDICATES CT SHORTING PINS-TO BE REMOVED WHEN LOAD IS CONNECTED TO CT
- * WIRE COLORS APPLICABLE ONLY WHEN USING CORD CONNECTORS TO SWITCHES

GAGE SWITCH RATINGS(AMPS)				
DEVICE	380VAC	220VAC	220VDC	
LT	0.03		0.05	
LL		3	1	
PV	0.08		0.14	
SPC				
WTI				
TPG				
LCP				
U				

NOTE:AC LOADS=INDUCTIVE P.F.75%
 DC LOADS=NON-INDUCTIVE

- WHT-WHITE
- GRN-GREEN
- BLK-BLACK
- BLU-BLUE
- ORN-ORANGE
- RED-RED
- BRN-BROWN
- YEL-YELLOW

3PHASE-500KVA/12.47KV/0.48					Coil Winding Specialist Inc 353 West Grove Ave, Orange, CA 92865				
DRAWN	CHECKED	CHECKED		APPROVED	FIRST ANGLE PROJECTION	SCALE	1		
MARCH 20TH,2025					CWS-500KVA3P-12.47-480 500 KVA THREE PHASE, 60 HZ 12,470V TO 277/480V. OIL FILLED				
									REV. NO. A



PAD MOUNTED TRANSFORMER

Standards	IEEE C57.12.00	ZG Series
Rated Power	500 kVA	Type ZGS-H-500/12.47
Rated Voltage	HV/LV 12470 / 480 V	Conductor Material HV Cu / LV Cu
Rated Current	HV/LV 23.15 / 601.4 A	Temperature Rise 65 °C
Vector Group	Dyn11	Core & Coil Untanking 2513 LBS
Frequency	60 Hz 3 Phase	Tank & Fittings 1675 LBS
Type of oil	FR3 Class KNAN	Liquid 241 GALS 1808 LBS
HV KV BIL	95 kV	Total 5996 LBS
LV KV BIL	30 kV	

TAP	Voltage(V)	Current(A)
1	13094	22.05
2	12782	22.58
3	12470	23.15
4	12158	23.74
5	11847	24.37

IMP. %

M / Y of Manufacture

Serial NO.

PRCLF CBUC15125C100
 BAY 4000358C12M

MAXIMUM AMPS AT 500KVA. %Z AT BASE KVA AND RATED VOLTAGE

3PHASE-500KVA/12.47KV/0.48				Coil Winding Specialist Inc 353 West Grove Ave, Orange, CA 92865			
DRAWN	CHECKED	CHECKED	APPROVED	FIRST ANGLE PROJECTION	SCALE	1	
MARCH 20TH, 2025				CWS-500KVA3P-12.47-480 500 KVA THREE PHASE, 60 HZ 12,470V TO 277/480V. OIL FILLED			
							REV. NO.