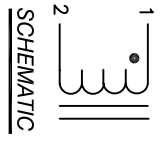


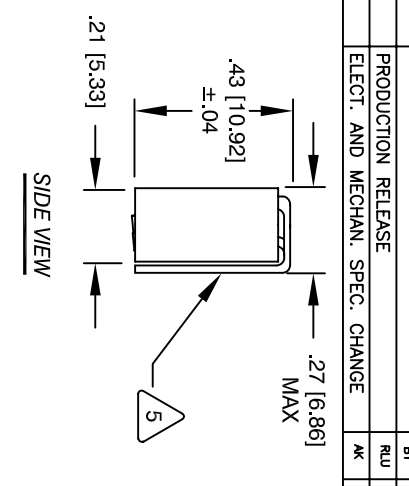
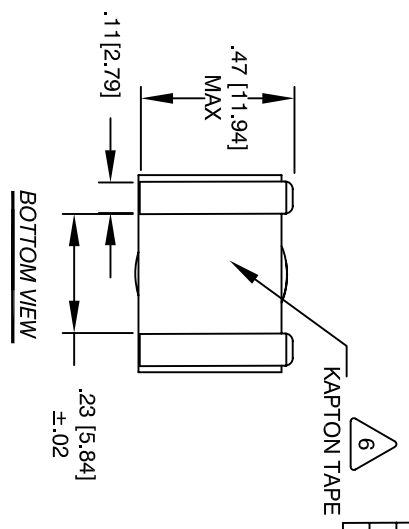
The information contained in this drawing is the sole property of Coil Winding Specialist, Inc. Any reproduction in part or whole without written permission of Coil Winding Specialist is prohibited.

REVISION HISTORY

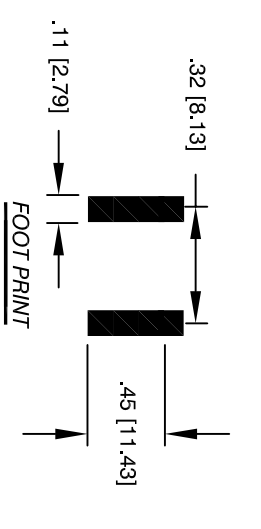
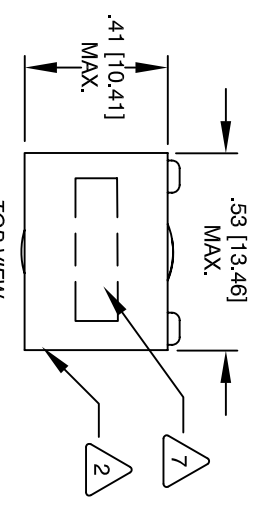
REV	ECN	DESCRIPTION	BY	DATE	CHK	DATE
C		PRODUCTION RELEASE	RLU	10/15/05	JLJU	10/15/05
D		ELECT. AND MECHAN. SPEC. CHANGE	AK	10/12/12	JLJU	10/12/12



- 8 BUILT TO ROHS COMPLIANCE AND LEAD FREE
- 7 WHERE SHOWN, USING A PERMANENT MARKING METHOD MARK PART NUMBER AND REVISION
- 6 BOTTOM CORE AS SHOWN
- 6 APPLY ONE KAPTON TAPE TO COVER THE



- 5 FILL WINDING AND CORE WITH EPOXY 2 PART A&B (600°F, 315°C) THE LEAD MUST REST FLAT ON PCB. REMOVE INSULATION AND TIN LEADS APPROX. 0.43 INCH
- 4 HELIX WIND 9-3/4 TURNS TIGHT TO CORE AND EVENLY SPACED CONSTRUCTION:



- 3 HI-POT (2 SECOND, 5mA MAX), 300 VRMS WINDING TO CORE
DCR= 14 MILLI-OHMS MAX. @ 25 ° C
RATED CURRENT = 12A MAX. @ 125 ° C
L = 7.6 uH ±15% , 0.25V, 0.5 A, 100KHz. @ 125 ° C
SPECIFICATIONS @ 25°C

- 2 EPOXY: 2 PARTS A & B (600°F., 315°C)
WIRE: UL RECOGNIZED 200°C RATED MAGNET WIRE, JIS C3102
CWS BYTEMARK OR OTHER APPROVED PART
CORE: HIGH FLUX

- 1 HELICAL COIL RATING 200°C REQUIRED
MATERIAL: UL RECOGNIZED 94V-0 FOR FLAMMABILITY
- NOTES: UNLESS OTHERWISE SPECIFIED, READ FROM BOTTOM UP.

PARTS LIST

A/R	QTY	UM	CODE	IDENT	MFG. P/N	DESCRIPTION	ITEM NO.
1	.42"	CWS	8265-S			EPOXY 2 PARTS A&B (600°F, 315°C)	5
1	2' 0	CWS	KAPTON TAPE			KAPTON TAPE, 0.25 Wx .42	4
1	EA	CWS	ET26174			BLK, KAPTON TAPE, 0.375" W x 2.0"	3
2	EA	CWS	395275			2.4x .2mm RIBBON WIRE	2
						HIGH FLUX CORE	1

UNLESS OTHERWISE SPECIFIED		AUTOCAD		X	
DIMENSIONING AND TOLERANCE PER ANSI Y14.5M AND [MILLIMETERS].		SOLIDWORKS			
TOLERANCE INCHES: .XXX=±.005 XX=±.015 X=±.030		DRAWN		RLU	
TOLERANCE METRICS: .XXX=±.127 XX=±.38 X=±.50		CHECKED		JLJU	
ANGLE PROJECTION		ENGR.		KSUM	
DO NOT SCALE DRAWING		APPR.		JLJU	
		DATE		10/15/05	
		DATE		10/15/05	
TITLE:		12 Amps Output Choke (2.4mmx.2 mm 9-3/4T)			
SIZE		Dwg. No. CWS-5327A			
SCALE		4=1			
		SHEET		1 OF 1	