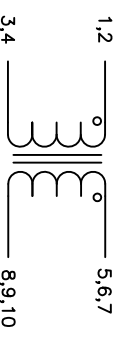


The information contained in this drawing is the sole property of Coil Winding Specialist, Inc. Any reproduction in part or whole without written permission of Coil Winding Specialist, Inc. is prohibited.

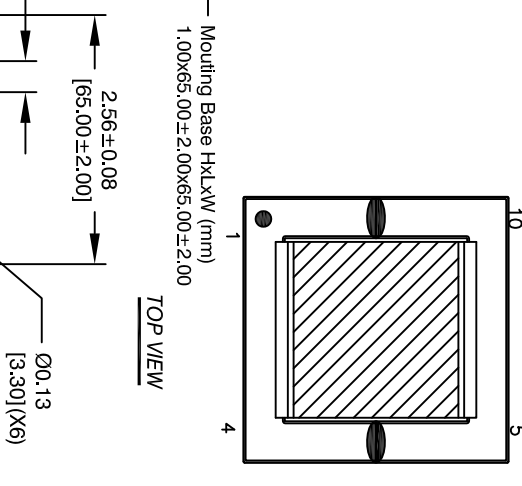
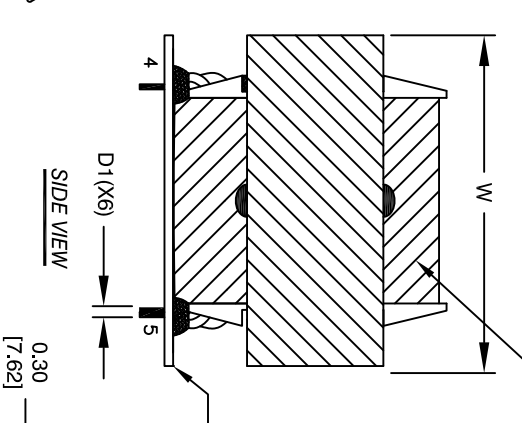
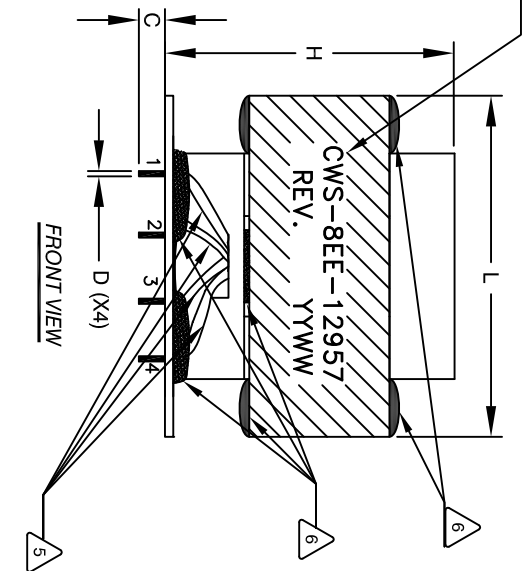
DIMENSIONAL TOLERANCES INCHES [MM]

REV	ECN	DESCRIPTION	BR	DATE	CHK	DATE
A1(X3)		TYP		0.28 [7.22]		
A2(X5)		TYP		0.29 [7.30]		
B1(X2)		TYP		0.83 [21.08]		
B1(X2)		TYP		0.43 [10.92]		
C1(X10)		TYP		0.37 [9.50]		
D1(X4)		TYP		0.05 [1.20]		
D1(X6)		TYP		0.10 [2.55]		
L		MAX		2.66 [67.50]		
W		MAX		2.66 [67.50]		
H		MAX		2.24 [57.00]		

SCHEMATIC



- 9 BUILT TO ROHS COMPLIANCE AND LEAD FREE.
- 8 MARK PART NUMBER AND REVISION WHERE SHOWN
- 7 VARNISH PART AND CURE
- 6 WRAP WOUND COIL WITH MYLAR TAPE WHERE SHOWN
- 5 APPLY EPOXY ON ALL PLACES WHERE SHOWN.
- 4 INSERTING TO BASE AND APPLYING EPOXY. PUT ALL TWISTED LITZ WIRES INTO TEFLON TUBES BEFORE STRIP AND TIN LEADS
- 3 WRAP TAPE AROUND CORES
- 2 WIND COIL EVENLY SPACED AROUND CORE CONSTRUCTION

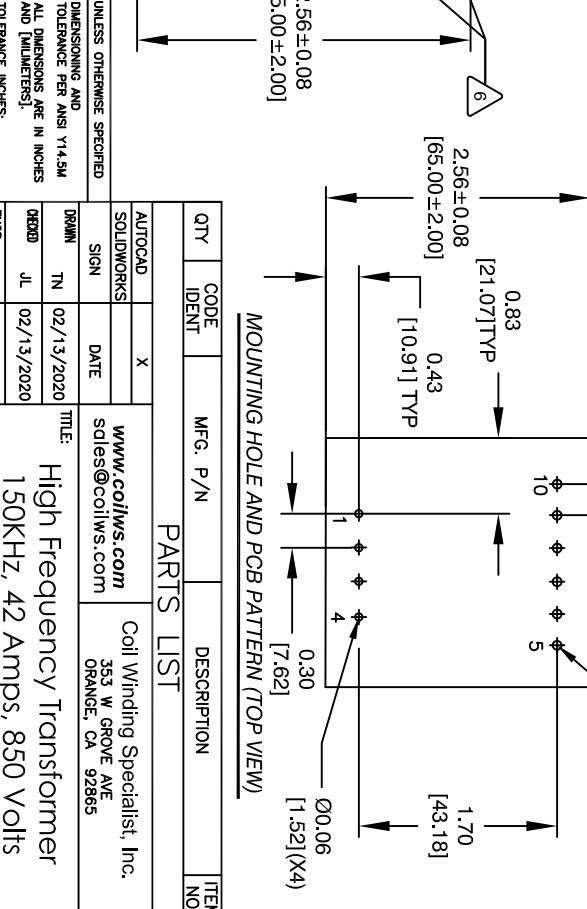
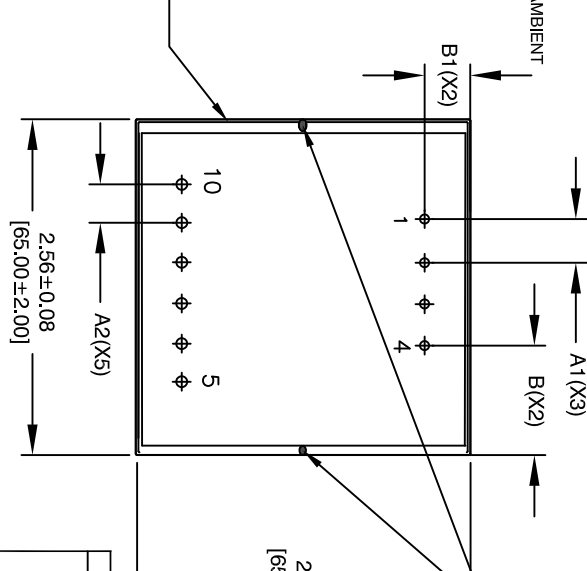


REVISION HISTORY

REV	ECN	DESCRIPTION	BR	DATE	CHK	DATE
A		PRODUCTION RELEASE	TN	02/13/2020	JL	02/13/2020
A1		UPDATED BASE DIM	TN	09/28/2020	JL	09/28/2020
A2		UPDATED PRI. & SEC. DCR	TN	10/06/2020	JL	10/06/2020

WEIGHT: 577 GRAMS (APPROX)
 RECOMMENDED OPERATING TEMP: -40°C TO 85°C AT 55°C AMBIENT
 PRIMARY TO SECONDARY: 3000VAC @ 1mA, 3s.
 WINDINGS TO CORE: 1500VAC @ 1mA, 3s.
 H-POUT TEST CONDITIONS:
 OUTPUT CURRENT: 42 AMPS MAX
 OUTPUT VOLTAGE: 72 VDC NOMINAL
 850 V MAX
 600 V MIN
 INPUT VOLTAGE (VDC):
 TRANSFORMER SWITCHING FREQUENCY: 150KHZ
 TRANSFORMER TURN RATIO: 3.3/75
 SECONDARY WINDING: 19 MILLI-OHMS TYP.
 PRIMARY WINDING: 56 MILLI-OHMS TYP.
 DCR:
 SECONDARY INDUCTANCE: 891uH
 PRIMARY INDUCTANCE: 12mH
 INDUCTANCE @1KHz: 0.25V, ZERO DC BIAS
 SPECIFICATIONS @ 25°C:

- 3 VARNISH DOLPH or EQUAL SILICONE DOWN CORNING OR EQUAL OUTER WRAP: MYLAR TAPE WIRE: UL RECOGNIZED 150°C RATED LITZ WIRE CORE: FERRITE CORE
- 2 INSULATION CLASS 150°C REQUIRED MATERIAL: UL RECOGNIZED 94V-0 FOR FLAMMABILITY
- 1 ANY TOLERANCE: THIS DIM. CAN VARY A LITTLE FROM PART TO PART. *TYP* IN DIM. TABLE REFERS TO A NON-CRITICAL TYPICAL (AVERAGE) DIM. WITHOUT NOTES: UNLESS OTHERWISE SPECIFIED, READ FROM BOTTOM UP. CAGE CODE: 5DMWE2



UNLESS OTHERWISE SPECIFIED DIMENSIONING AND TOLERANCE PER ANSI Y14.5M ALL DIMENSIONS ARE IN INCHES AND [MILLIMETERS].
 TOLERANCE INCHES: ±.40/30°
 TOLERANCE METRCS: ±.40/30°
 ANGLE PROJECTION
 DO NOT SCALE DRAWING

QTY	CODE	IDENT	MFG. P/N	DESCRIPTION	ITEM NO.
	X			PARTS LIST	
				www.coilw.com	
				353 W. GROVE AVE	
				ORANGE, CA 92665	
				Coil Winding Specialist, Inc.	
				High Frequency Transformer	
				150KHz, 42 Amps, 850 Volts	
				CWS-8EE-12957	
				SIZE DIM: NO.	
				B	
				NOT TO SCALE	
				SHEET 1 OF 1	