

The information contained in this drawing is the sole property of CWS Coil Winding Specialist. Any reproduction in part or whole without written permission of CWS Coil Winding Specialist is prohibited.

REVISION HISTORY			
REV	ECN	DESCRIPTION	
A		INITIAL DRAWING RELEASE	
		BY	DATE
		CHK	DATE
		TN	03/30/21
		DL	03/30/21

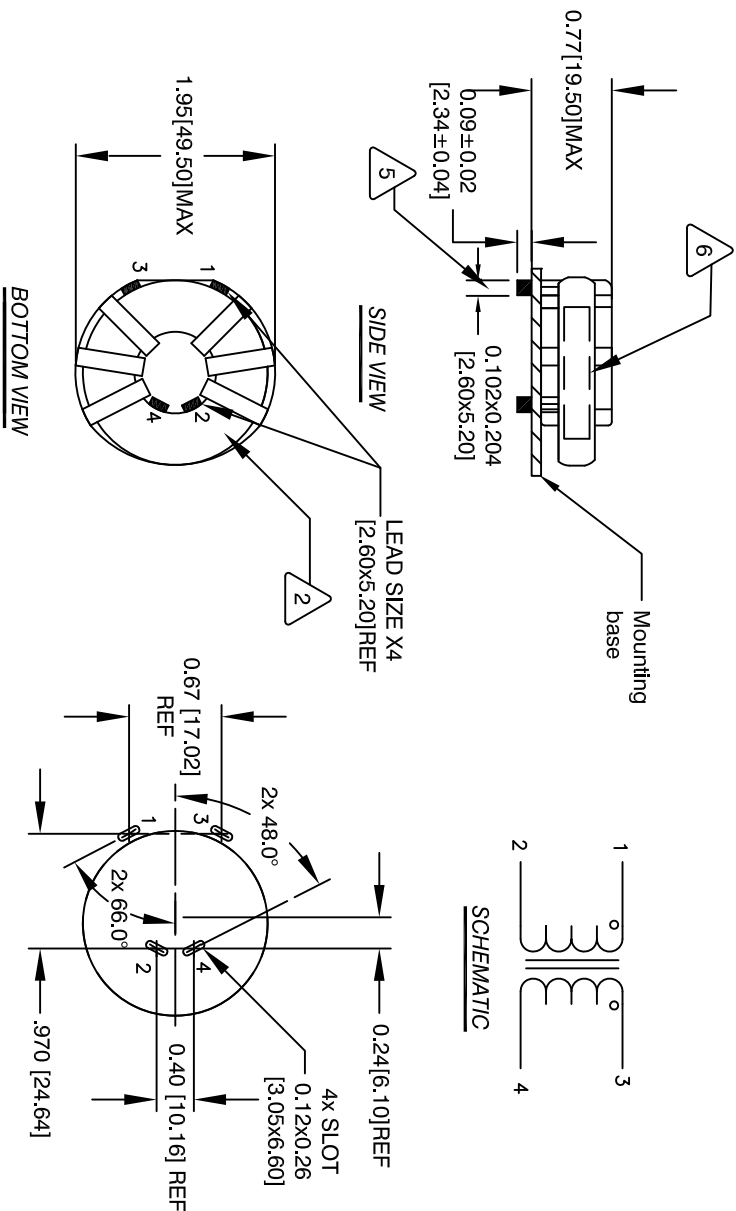
- BUILD TO ROHS COMPLIANCE AND LEAD FREE
- DIP-VARNISH WITH AC43 OR BC-346A OR EQUAL
- MARK PART NUMBER, REVISION AND DATE CODE
WRAP INDUCTOR WITH GLASS TAPE
- TO THE CORE
MUST REST FLAT ON PCB. LEADS MUST BE TANGENT
FLUSH WITH THE COIL EDGE, AS SHOWN (I.E. COIL
REMOVE INSULATION AND TIN LEADS PER THE SPECIFIED SPEC.
- SIDE OF CORE AND EVENLY SPACED, POLARITY NOTED
WIND 4 TURNS, .102x .204 RECT. SINGLE LAYER ON EACH
CONSTRUCTION:
- WEIGHT: 76 GRAMS TYP
HI-POT TEST FOR INTERWINDING ISOLATION: 1500VAC, 1mA, 3s.
INTERWINDING CAPACITANCE = 93pF TYP @SRF
|Z| = 314 OHMS TYP @ SRF
SRF = 1.65MHZ TYPICAL
LEAKAGE INDUCTANC = 1.2uH TYP @ 10KHZ
DCR = 0.40 MILL-OHMS MAX PER COIL
L = 52 uH MIN PER COIL, 70 uH NOM PER COIL @ 1 KHZ, 1Vrms
SPECIFICATIONS @ 25 °C:

- OUTER WRAP: 3M GLASS TAPE OR QUAL
WIRE: UL RECOGNIZED 200°C RATING MAGNET WIRE
CWS BYTEMARK OR OTHER APPROVED PART
CORE: FERRITE TOROID, HIGH PERM MNZN

- CLASS B (130°C) REQUIRED
MATERIAL: UL RECOGNIZED 94V-0 FOR FLAMMABILITY

ANY TOLERANCE. THIS DIM. CAN VARY A LITTLE FROM PART TO PART.
"TYP" IN DIM. TOL. TABLE REFERS TO A NON-CRITICAL TYPICAL (AVERAGE) DIM. WITHOUT

NOTES: UNLESS OTHERWISE SPECIFIED, READ FROM BOTTOM UP.
CAGE CODE: 5DME2



QTY	CODE	IDENT	MFG. P/N	DESCRIPTION	ITEM NO.
PARTS LIST					
AUTOCAD		X	CWS Coil Winding Specialist.		
SOLIDWORKS			353 W Grove Ave		
SIGN		DATE	Orange, CA 92865		
DRAWN		TN	03/30/21	TITLE:	
ENGRD		JM	03/30/21	Inductor Common Mode	
ENGR		JL	03/30/21	SIZE	
APPR		JL	03/30/21	CWS-CM-12659	
DO NOT SCALE DRAWING				REV	
				A	