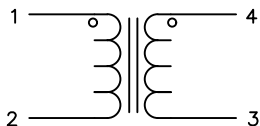


The information contained in this drawing is the sole property of CWS Coil Winding Specialist. Any reproduction in part or whole without written permission of CWS Coil Winding Specialist is prohibited.



SCHMATIC

DIMENSIONAL TOLERANCES INCHES [MM]					
A TYP	B TYP	C TYP	E REF	F REF	G REF
3.60 [91.44]	1.30 [33.02]	1.85 [47.00]	0.63±0.08 [15.88±0.20]	0.27±0.05 [6.86±1.27]	0.75 [19.05]

REVISION HISTORY						
REV	ECN	DESCRIPTION	SIGN & DATE			
			BY	DATE	CHK	DATE
A		INITIAL DRAWING RELEASE	TN	08/10/21	JL	08/10/21

8 BUILT TO RoHS COMPLIANCE AND LEAD FREE.

7 MARK PART NUMBER AND REVISION, DATE CODE.

6 COVER JOINTS WITH BLACK HEATSHRINK TUBING. CRIMP AND SOLDER (X4) RING TERMINALS AND

5 STRIP AND TIN LEAD WIRES WIND COIL EVENLY SPACE

4 CONSTRUCTION:

WEIGHT = 582 GRAMS

OPERATING TEMP RANGE = -25°C TO 120°C

MAX TEMP RISE = 40 °C

INTERWINDING ISOLATION = 2000 VOLTS RMS.

DCR ON EACH WINDING = 1.5 mΩ MAX.

SRF = 2.1 MHz TYP

RATED VOLTAGE = 500 VAC OR VDC

RATED CURRENT = 100 AMPS

LEAKAGE INDUCTANCE = 8 uH TYP @ 10 KHz, 1 Vrms.

INTERWINDING CAPACITANCE= 6.6pF TYP @ SRF.

IMPEDANCE = 3.5 kΩ TYP @ SRF.

L = 3.45 mH MIN @ 10 KHz, 250mV, 0 ADC

INSULATION RESISTANCE = 100 MEGA-OHMS MIN. @ 500 VDC

3 SPECIFICATIONS AT 25°C:

WIRE: UL RECOGNIZED 200°C RATED MAGNET WIRE

CWS BYTEMARK OR OTHER APPROVED PART

CORE: NANOCRYSTALLINE OR AMORPHOUS CORE

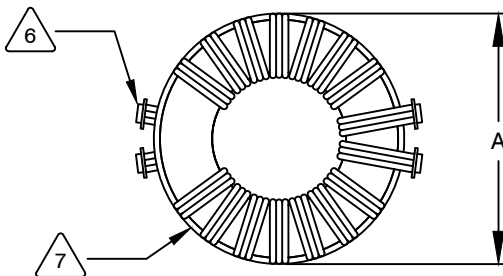
BOBBIN RATING CLASS B (200°) REQUIRED

2 MATERIAL: UL RECOGNIZED 94V-0 FOR FLAMMABILITY

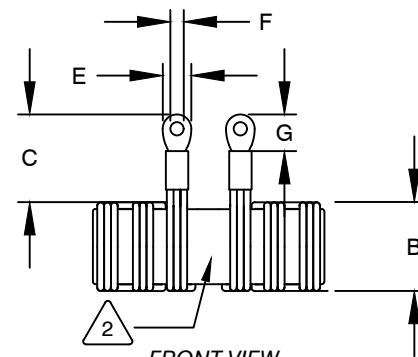
ANY TOLERANCE. THIS DIM. CAN VARY A LITTLE FROM PART TO PART.

"TYP" IN DIM. TOL. TABLE REFERS TO A NON-CRITICAL TYPICAL (AVERAGE) DIM. WITHOUT

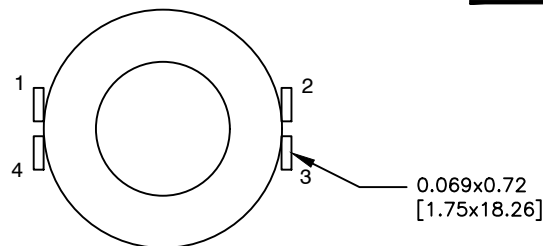
NOTES: UNLESS OTHERWISE SPECIFIED, READ NOTES FROM BOTTOM TO TOP.



TOP VIEW



FRONT VIEW



MOUNTING (TERMINALS UPWARD)

CODE IDENT	MFG. P/N	DESCRIPTION	ITEM NO.
PARTS LIST			
AUTOCAD	X	COILWS COM, INC www.coilws.com	CWS Coil Winding Specialist. 353 W Grove Ave Orange, CA 92865
SOLIDWORKS			
DRAWN	TN 09/10/21	TITLE: Nanocrystalline Inductor Common Mode Chokes Horizontal Mount	REV A
CHECKED	JM 09/10/21		
ENGR.	JL 09/10/21		
APPR.	JL 09/10/21		
SIZE B		DWG. NO. CWS-CMN-12144	
SCALE NOT_TO_SCALE		SHEET 1 OF 1	

UNLESS OTHERWISE SPECIFIED	
DIMENSIONING AND TOLERANCE PER ANSI Y14.5M	
ALL DIMENSIONS ARE IN INCHES AND [MILLIMETERS].	
TOLERANCE INCHES: .XXX=±.005 .XX=±.015 $\angle=±0°30'$	
TOLERANCE METRICS: .XXX=±.127 .XX=±.38 $\angle=±0°30'$	
ANGLE PROJECTION	
DO NOT SCALE DRAWING	

CAD-FILE: