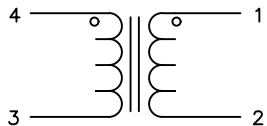


The information contained in this drawing is the sole property of Coil Winding Specialist, Inc. Any reproduction in part or whole without written permission of Coil Winding Specialist is prohibited.



SCHEMATIC

7 BUILT TO RoHS COMPLIANCE

6 REVISION AND DATE CODE. MARK CWS AND CUSTOMER PART NUMBER

5 APPLY EPOXY WHERE SHOWN

4 WIND BOTH COILS EVENLY SPACED CONSTRUCTION:

WEIGHT = 51 GRAMS TYP

HIPOT TEST WINDING TO WINDING: 2.5KVAC, 1mA, 1s.

OPERATING TEMP. RANGE: -40°C TO +125°C

SRF = 104KHz TYPICAL

|Z| = 27 KILO-OHMS TYP @ SRF

INTER-WINDING CAPACITANCE = 32pF TYP @ SRF

LEAKAGE INDUCTANCE = 80uH TYP @ 10KHz

DCR ON EACH WINDING = 80 MILLI-OHMS MAX

Ls = 35mH MIN. @ 10KHz, 250mV

Ls = 80mH MIN. @ 1KHz, 250mV

INDUCTANCE ACROSS PINS: (1 - 2) & (4 - 3):

3 SPECIFICATIONS @ 25°C:

2 WIRE: 200°C RATED MAGNET WIRE

CORE: NANOCRYSTALLINE TOROIDAL CORE

RATING CLASS B (130 °C MIN.) REQUIRED

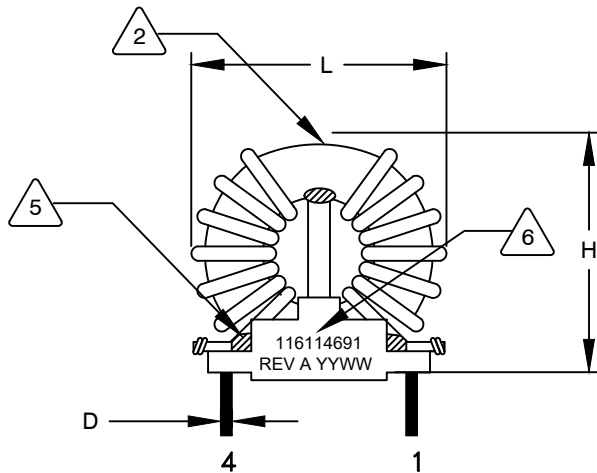
1 MATERIAL: UL RECOGNIZED 94V-0 FOR FLAMMABILITY

ANY TOLERANCE. THIS DIM. CAN VARY A LITTLE FROM PART TO PART.

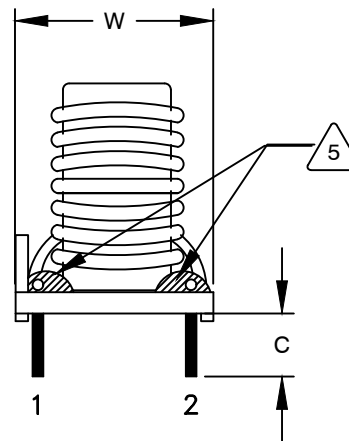
"TYP" IN DIM. TOL. TABLE REFERS TO A NON-CRITICAL TYPICAL (AVERAGE) DIM. WITHOUT

NOTES: UNLESS OTHERWISE SPECIFIED, READ FROM BOTTOM UP.

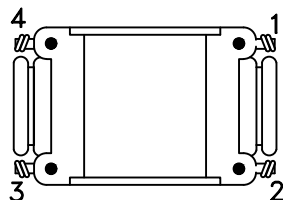
CAGE CODE: 5DME2



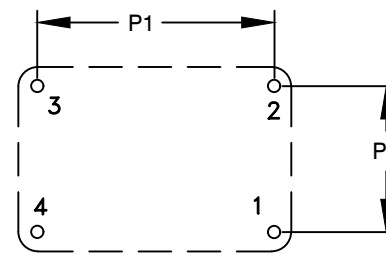
FRONT VIEW



SIDE VIEW



BOTTOM VIEW



MOUNTING HOLES PATTERN

REVISION HISTORY

REV	ECN	DESCRIPTION	SIGN & DATE			
			BY	DATE	CHK	DATE
A		INITIAL DRAWING RELEASE	TN	06/26/21	JL	06/26/21

DIMENSIONAL TOLERANCES

DIM	inch	mm
C (MIN)	0.20±0.04	5.00±1.00
D Ø (REF)	0.05	1.20
H (MAX)	1.54	39.00
L (MAX)	1.57	40.00
W (MAX)	0.87	22.00
P1 (REF)	0.90±0.02	22.90±0.50
P2 (REF)	0.60±0.02	15.20±0.50

CODE IDENT	MFG. P/N	DESCRIPTION	ITEM NO.
PARTS LIST			
AUTOCAD	X	Coil Winding Specialist, Inc. 353 W. GROVE AVENUE ORANGE, CA. 92865	
SOLIDWORKS			
SIGN	DATE	TITLE: Common Mode Choke	
DRAWN	TN 06/26/21	CWS-CMN-12207	
CHECKED	JM 06/26/21	REV	A
ENGR.	JL 06/26/21	SCALE	NOT_TO_SCALE
APPR.	JL 06/26/21	SHEET 1 OF 1	

UNLESS OTHERWISE SPECIFIED

DIMENSIONING AND TOLERANCE PER ANSI Y14.5M

ALL DIMENSIONS ARE IN INCHES AND [MILLIMETERS].

TOLERANCE INCHES:
.XXX=±.005 .XX=±.015 $\angle = \pm 0^{\circ}30'$

TOLERANCE METRICS:
.XXX=±.127 .XX=±.38 $\angle = \pm 0^{\circ}30'$

ANGLE PROJECTION

DO NOT SCALE DRAWING

CAD-FILE: