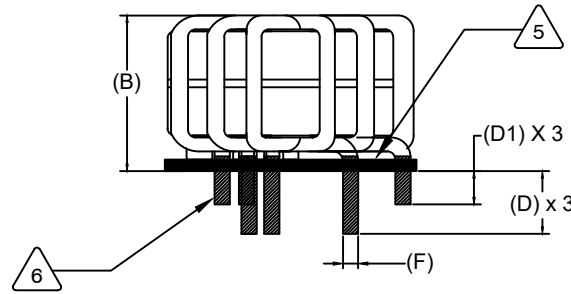


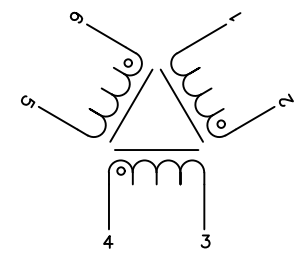
The information contained in this drawing is the sole property of Coil Winding Specialist Inc. (CWS). Any reproduction in part or whole without written permission of CWS is prohibited.

DIMENSIONAL TOLERANCE INCHES [MM]					
A(OD) MAX	B(HGT)	D1(LEAD) MIN	D(LEAD) MIN	E TYP	F (Lead Dia) TYP
2.10 [53.34]	0.94±0.03 [23.88±0.76]	0.50 [12.70]	0.75 [19.05]	1.75 [44.45]	0.064 [1.63]

REVISION HISTORY						
REV	ECN	DESCRIPTION	SIGN & DATE			
			BY	DATE	CHK	DATE
A	151201	DRAWING COPY FROM TPW-502U-B15A WITH HT CHANGED	AK	12/1/15	BO	12/1/15
B		UPDATED SPEC.	TN	08/11/21	JL	08/11/21



**FRONT VIEW**



**SCHEMATIC**

8 BUILT TO RoHS COMPLIANCE

7 LABEL PART NUMBER AT THE BOTTOM OF THE BASE.

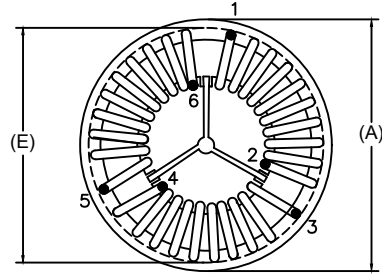
6 TRIM INNER LEADS TO 0.75 AND OUTER LEADS TO 0.5 INCH FROM BOTTOM OF BASE

5 APPLY EPOXY

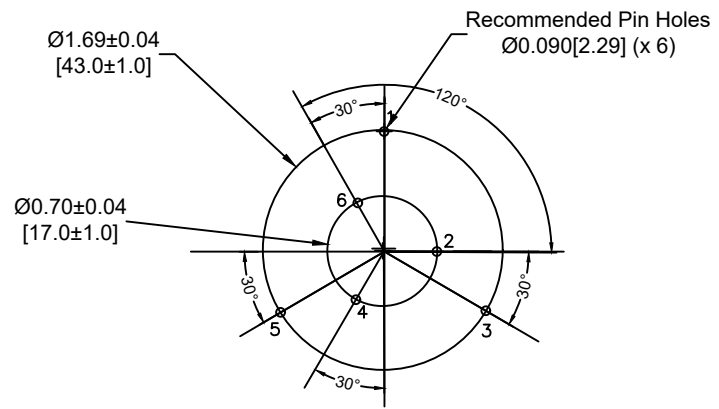
4 STRIP AND TIN LEADS (NO INSULATION IS ALLOWED BELOW THE BASE LEVEL.)

WEIGHT = 85 GRAMS TYPICAL  
 OPERATING TEMP RANGE = -40°C TO 125°C  
 MAX TEMP RISE = 30°C  
 INTERWINDING ISOLATION = 2000 VOLTS RMS.  
 INTERWINDING CAPACITANCE = 11 pF TYP @ SRF  
 |Z| = 4 kΩ TYP @ SRF  
 SRF = 2.6 MHz TYPICAL  
 RATED VOLTAGE = 1000 VAC OR VDC  
 RATED CURRENT = 15 AMPS  
 LEAKAGE INDUCTANCE = 6 μH TYP @ 10 KHz, 0.25 Vrms.  
 DCR ON EACH WINDING = 6.5 mΩ MAX.  
 L = 5 mH MIN @ 1 KHz, 250mVrms, 0 ADC

3 SPECIFICATIONS AT 25°C:



**TOP VIEW**



**MOUNTING HOLES PATTERN**

WIRE: UL RECOGNIZED 200°C RATED MAGNET WIRE

CWS BYTEMARK OR OTHER APPROVED PART

2 CORE: NANOCRYSTALLINE OR AMORPHOUS CORE

1 CASE RATING CLASS B (130°C) REQUIRED

MATERIAL: UL RECOGNIZED FOR FLAMMABILITY

ANY TOLERANCE. THIS DIM. CAN VARY A LITTLE FROM PART TO PART.  
 "TYP" IN DIM. TOL. TABLE REFERS TO A NON-CRITICAL TYPICAL (AVERAGE) DIM. WITHOUT

NOTES: UNLESS OTHERWISE SPECIFIED. READ NOTES FROM BOTTOM TO TOP.

CAGE CODE: 5DME2

UNLESS OTHERWISE SPECIFIED DIMENSIONING AND TOLERANCE PER ANSI Y14.5M ALL DIMENSIONS ARE IN INCHES AND [MILLIMETERS]. TOLERANCE INCHES: .XXX±.005 .XX±.015 ∠=±0°30' TOLERANCE METRICS: .XXX±.127 .XX±.38 ∠=±0°30' ANGLE PROJECTION DO NOT SCALE DRAWING	AUTOCAD	X	www.coilws.com	Coil Winding Specialist Inc. 353 West Grove Ave Orange, California. 92865
	SOLIDWORKS			
	SIGN	DATE	sales@coilws.com	TITLE: Nanocrystalline Inductor Three-Phase Common Mode Choke Horizontal Mount
	DRAWN AK	12/1/15	SIZE DWG. NO.	
CHECKED JM	12/1/15	SCALE	REV B	
ENGR. BO	12/1/15		CWS-CMN-12568	
APPR. BO	12/1/15		N/A	SHEET 1 OF 1