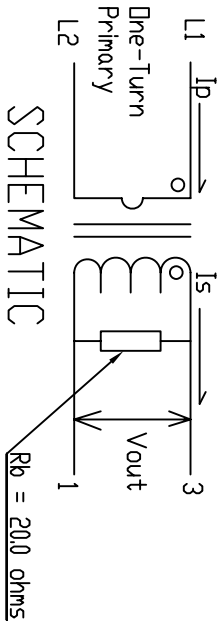
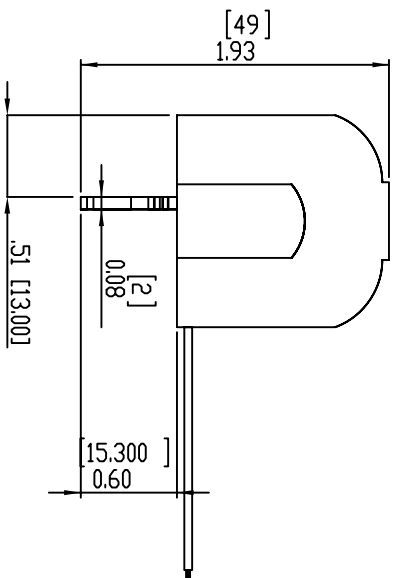
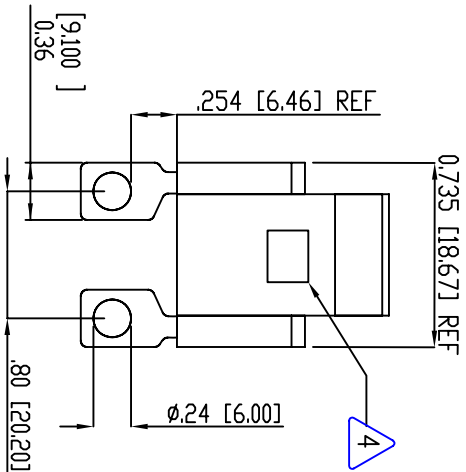


The information contained in this drawing is the sole property of Coil Winding Specialists, Inc. Any reproduction in part or whole without written permission of Coil Winding Specialists is prohibited.



NOTE: BURDEN RESISTOR Rb ARE NOT PROVIDED

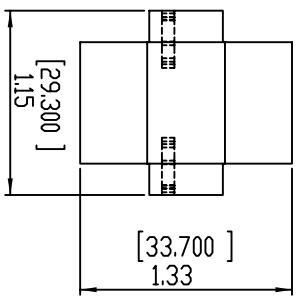


FRONT VIEW

SIDE VIEW

4 PART AND REVISION NUMBER

3. BUILT TO ROHS COMPLIANCE AND LEAD FREE
 DC RESISTANCE = 98 OHMS MAX
 INSULATION RESISTANCE PRIMARY TO SECONDARY = 1 G-OHMS
 PRIMARY TO SECONDARY INSULATION = 3KV DC
 PHASE ERROR = 5' TO RATED CURRENT
 BURDEN RESISTOR = 6 OHMS
 LINEARITY (ACCURACY) = 0.1% TO RATED CURRENT
 OPERATING TEMPERATURE = -25°C TO +85°C
 DC TOLERANT OR DC IMMUNE
 RECOMMENDED INPUT CURRENT RANGE = 0 A TO 60 A WITH NO SATURATION
 PRIMARY CURRENT RATING = 50 AMP @ 55 HZ
 TURNS RATIO = 2000 TURNS
 SPECIFICATIONS @ 25°C
2. SPECIFICATIONS @ 25°C



TOP VIEW

1. WIRE: UL RECOGNIZED 130°C RATED MAGNET WIRE
 CWS BYTEMARK OR OTHER APPROVED PART
 CORE: TAPE WOUND

NOTE: UNLESS OTHERWISE SPECIFIED, READ FROM BOTTOM UP

UNIT: INCHES [MM]

| REV | | ECN | DESCRIPTION | SIGN & DATE | |
|-----|------|-------|---------------------|-------------|----------|
| BY | DATE | CHK'D | DATE | BY | DATE |
| A | | | PRODUCTION RELEASE | AK | 05/15/12 |
| B | | | ELECT. SPECS CHANGE | GN | 08/20/12 |
| | | | | JL | 08/20/12 |

REVISION HISTORY

| QTY | CODE | INVENT | WFG | P/N | DESCRIPTION | ITEM NO. |
|-----|------|--------|-----|-----|-------------|----------|
| | | | | | | |

PARTS LIST

Coil Winding Specialists, Inc.
 353 W. GROVE AVENUE
 DRANES, CA 92865 CAGE: SJM22

Class 0.1% Current Transformer
 45 Hz to 65 Hz
 (Rated Primary Current 50 Amp @ 55 Hz)

CWS-CT-12117

| UNLESS OTHERWISE SPECIFIED | |
|---|----------|
| DIMENSIONS AND TOLERANCES PER ANSI Y14.5M | |
| ALL DIMENSIONS ARE IN INCHES | |
| AND FRACTIONS | |
| TOLERANCES IN INCHES | |
| XX ±0.010 | ∠ ±0°30' |
| XXX ±0.005 | ∠ ±0°30' |
| XXXX ±0.0025 | ∠ ±0°30' |
| ANGLED PROJECTION | |
| DO NOT SCALE DRAWING | |

| AUTHOR | DATE | TITLE | SCALE | SHEET NO. | TOTAL SHEETS |
|------------|----------|-------|-------|-----------|--------------|
| SOLIDWORKS | X | | | | |
| GN | 04/19/12 | | | | |
| JL | 04/19/12 | | | | |
| JL | 04/19/12 | | | | |
| JL | 04/19/12 | | | | |