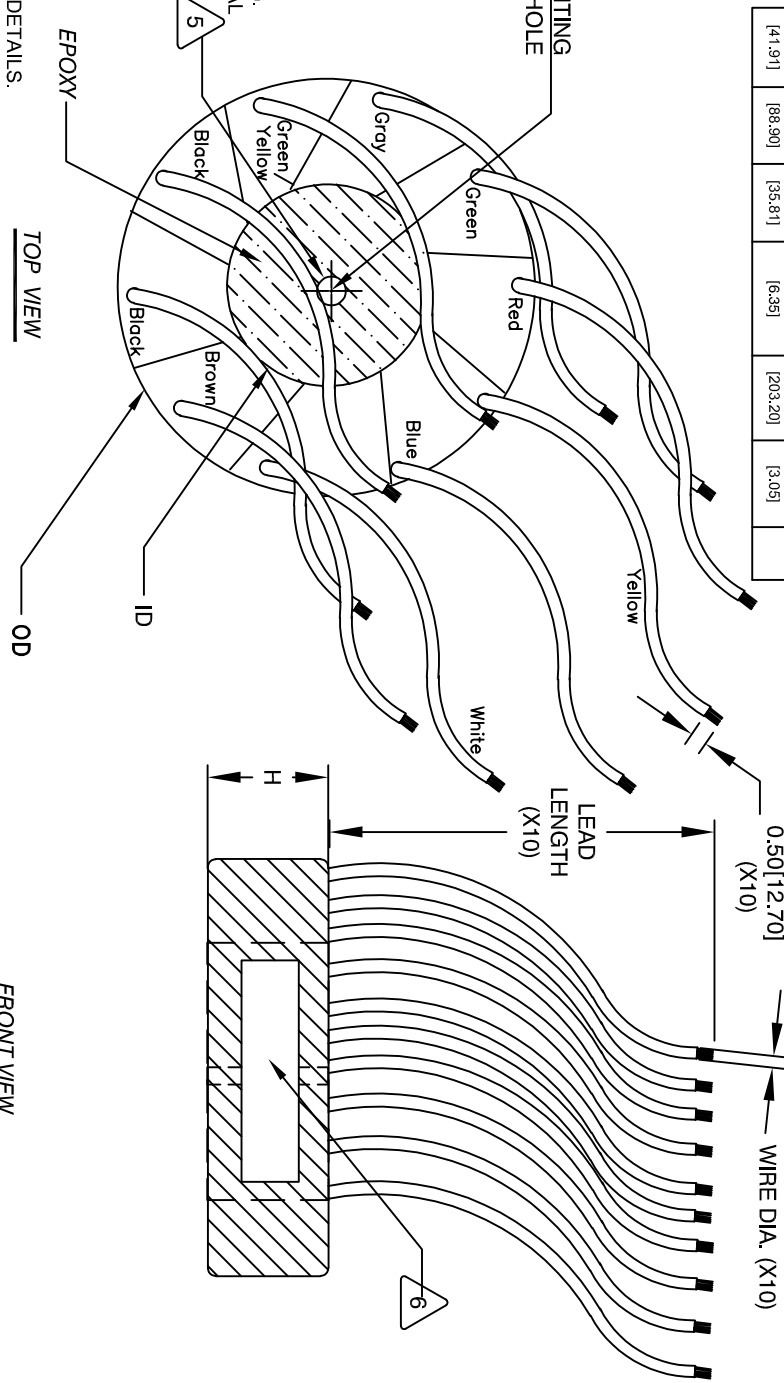
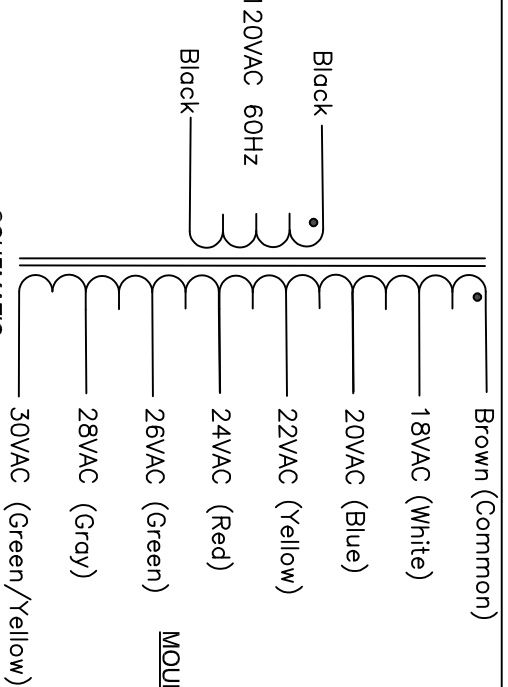


The information contained in this drawing is the sole property of CWS Coil Winding Specialist. Any reproduction in part or whole without written permission of CWS Coil Winding Specialist is prohibited.

| DIMENSIONAL TOLERANCES INCHES (MM) |                  |                  |                     |                   |                 |
|------------------------------------|------------------|------------------|---------------------|-------------------|-----------------|
| H                                  | OD               | ID               | MOUNTING HOLE (TYP) | LEAD LENGTH (X10) | WIRE DIA. (X10) |
| MAX 1.65 [41.91]                   | MAX 3.50 [88.90] | TYP 1.41 [35.81] | 0.25 [6.35]         | 8.00 [203.20]     | 0.12 [3.05]     |

| REVISION HISTORY |     |                    | SIGN & DATE |          |          |
|------------------|-----|--------------------|-------------|----------|----------|
| REV              | ECN | DESCRIPTION        | BY          | DATE     | DATE     |
| A                |     | PRODUCTION RELEASE | TN          | 11/04/24 | 11/04/24 |



- BUILT TO ROHS COMPLIANCE AND LEAD FREE
- APPLY LABEL WITH P/N, REVISION AND DATE CODE.  
DRILL APPROX. 0.25" DIAMETER AT THE CENTER FOR MOUNTING.  
POT THE TRANSFORMER'S ID USING APPROVAL EPOXY MATERIAL
- REMOVE INSULATION ON LEAD WIRES (X10) APPROX. 0.5".  
WRAP TRANSFORMER WITH APPROPRIATE INSULATION TAPE.  
WIND COIL EVENLY SPACED ON TOROIDAL CORE.
- CONSTRUCTION:  
WEIGHT: APPROX. 900 GRAMS  
OPERATING TEMP. RANGE = -25°C TO 125°C  
OUTPUT VOLTAGE: 18 - 30VAC, 60HZ, 1.5A. SEE SCHEMATIC FOR DETAILS.  
OUTPUT VOLTAGE: ALL VOLTAGES ARE WITH RESPECT TO BROWN (COMMON).  
INPUT VOLTAGE: 120VAC, 60HZ
- SPECIFICATIONS @ 25°C:
- CORE: TOROIDAL
- CORE: TOROIDAL
- EPOXY: UL APPROVED MATERIAL.  
WIRE: UL APPROVAL ROUND MAGNET WIRE. CLASS 200C.  
UL APPROVED TRANSFORMER INSULATION TAPE
- MATERIALS:

DIM. WITHOUT ANY TOLERANCE. THIS DIM. CAN VARY A LITTLE FROM PART TO PART.  
\*TYP\* IN DIMENSIONAL TOLERANCES REFERS TO A NON-CRITICAL TYPICAL (AVERAGE)  
NOTES: UNLESS OTHERWISE SPECIFIED, READ NOTES FROM BOTTOM TO UP.  
CAGE CODE: 5DMEZ

| UNLESS OTHERWISE SPECIFIED                      |  | AUTOCAD          |  | X        |  |
|---|--|------------------|--|----------|--|
| DIMENSIONING AND TOLERANCE PER ANSI Y14.5M      |  | SOLIDWORKS       |  | SIGN     |  |
| ALL DIMENSIONS ARE IN INCHES AND [MILLIMETERS]. |  | DRAWN            |  | DATE     |  |
| TOLERANCE INCHES: .XX±.003 .X±.015              |  | TN               |  | 11/04/24 |  |
| TOLERANCE METERS: .XX±.08 .X±.15                |  | ENGR.            |  | 11/04/24 |  |
| ANGLE PROJECTION: 1st ANGLE                     |  | APPR.            |  | 11/04/24 |  |
| DO NOT SCALE DRAWING                            |  | SCALE            |  | N/A      |  |
| TITLE: TOROIDAL TRANSFORMER                     |  | CWS-120VIN-70    |  | REV A    |  |
| 18 - 30VAC, 60HZ, 1.5AMP MULTIPLE OUTPUTS       |  | CWS-MO-120VIN-70 |  | REV A    |  |
| CWS Coil Winding Specialist.                    |  | CWS-120VIN-70    |  | REV A    |  |
| 353 West Grove Ave.                             |  | CWS-120VIN-70    |  | REV A    |  |
| Orange, CA 92865                                |  | CWS-120VIN-70    |  | REV A    |  |