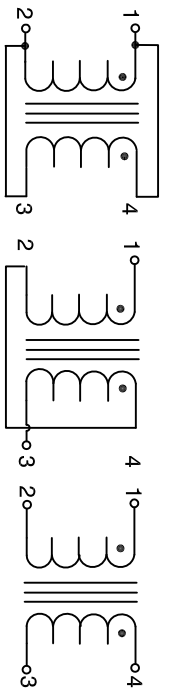


The information contained in this drawing is the sole property of CWS Coil Winding Specialist. Any reproduction in part or whole without written permission of CWS Coil Winding Specialist is prohibited.



7 BUILD TO ROHS COMPLIANCE AND PB FREE

6 AND REVISION WHERE SHOWN IF APPLICABLE MARK PART NUMBER

5 REMOVE INSULATION AND TIN LEADS

4 WIND ON TO CORE AND EVENLY SPACED CONSTRUCTION:

TO INSURE INTERGRITY OF WINDING SEPARATION HI-POT TEST FOR WINDING TO WINDING = 300 VDC MIN.
 MAX DCR IS $\pm 15\%$ OF TYPICAL VALUE.
 SERIES DCR = 0.193 OHMS TYP @ 20 °C
 SERIES RMS CURRENT = 1.51 AMPS.
 PARALLEL: (1,4 - 3,2), SERIES: (1 - 3) TIE (2 - 4).
 @ 100 KHZ, 0.250 VRMS, 0.0 ADC,
 SERIES OPEN CIRCUIT INDUCTANCE = 100.51 μ H $\pm 25\%$,

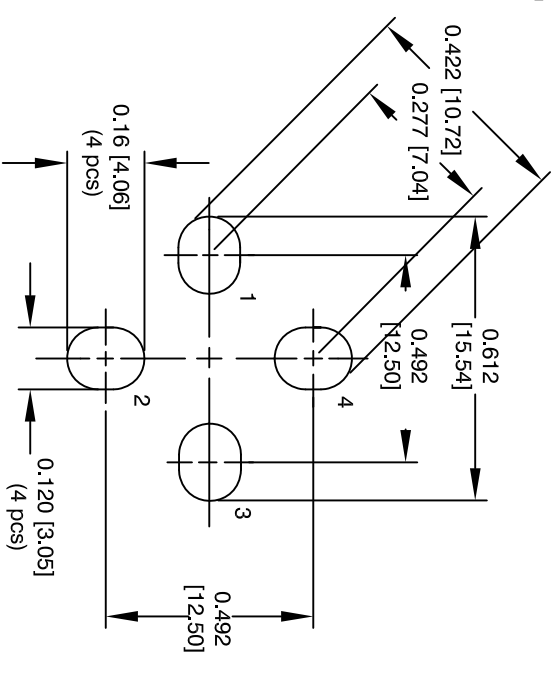
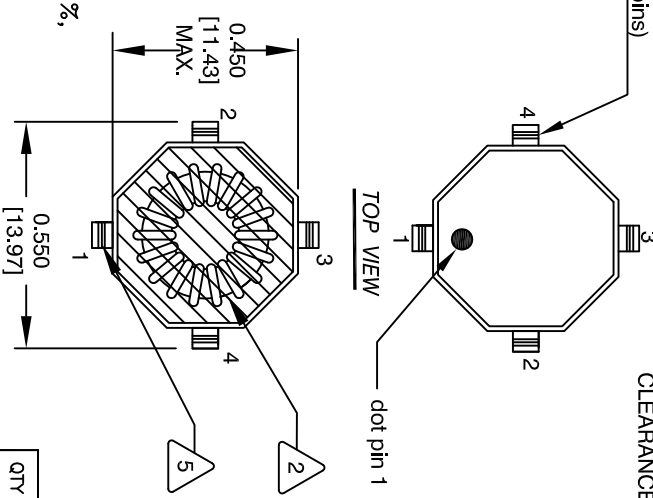
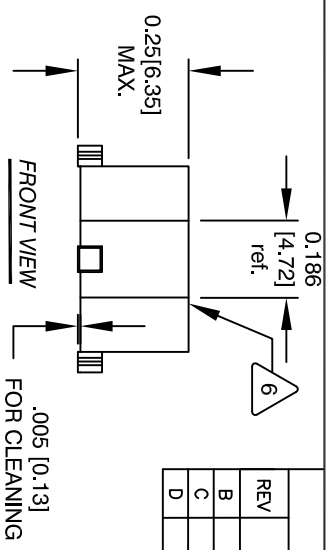
MAX DCR IS $\pm 15\%$ OF TYPICAL VALUE
 PARALLEL DCR = 0.048 OHMS TYP @ 20 °C,
 DELTA TEMP 40 °C, AMBIENT TEMP 85 °C.
 PARALLEL RMS CURRENT = 3.02 AMPS @
 PARALLEL (1,4 - 3,2), SERIES (1 - 3) TIE (2 - 4).
 @ 100 KHZ, 0.250 VRMS, 0.0 ADC,
 PARALLEL OPEN CIRCUIT INDUCTANCE = 25.14 μ H $\pm 25\%$,
 PARALLEL RATED INDUCTANCE = 25.0 μ H

3 SPECIFICATIONS:

WIRE: UL RECOGNIZED 130°C RATING MAGNET WIRE
 CWS BYTEMARK OR OTHER APPROVED PART
 CORE: TOROID

1 BOBBIN RATING CLASS B (130°C) REQUIRED
 MATERIAL: UL RECOGNIZED 94V-0 FOR FLAMMABILITY

NOTES: UNLESS OTHERWISE SPECIFIED, READ FROM BOTTOM UP.



MOUNTING HOLES PATTERN

REVISION HISTORY		SIGN & DATE	
REV	ECN	BY	DATE
B		RPR	4/26/05
C		RL	4/30/11
D		TN	10/28/19

REV	DESCRIPTION	BY	DATE
B	PRODUCTION RELEASE	RPR	4/26/05
C	FOOTPRINT AND NOTE UPDATE	RL	4/30/11
D	UPDATED TOP & BOTTOM VIEWS	TN	10/28/19

QTY	CODE	IDENT	MFG. P/N	DESCRIPTION	ITEM NO.
	AUTOCAD	X			
	SOLIDWORKS				
	SIGN	DATE			
	DRWNR	4/26/05			
	CHKD	4/26/05			
	ENGR.	4/26/05			
	APPR.	04/28/11			

PARTS LIST		TITLE:	
sales@colws.com	Coil Winding Specialist, Inc.	SIZE	DMG. NO.
www.colws.com	353 W. Grove Avenue	SCALE	
	Orange, CA 92865	NOT TO SCALE	
Parallel Series Inductor		REV	D
		SHEET	1 OF 1

DO NOT SCALE DRAWING