

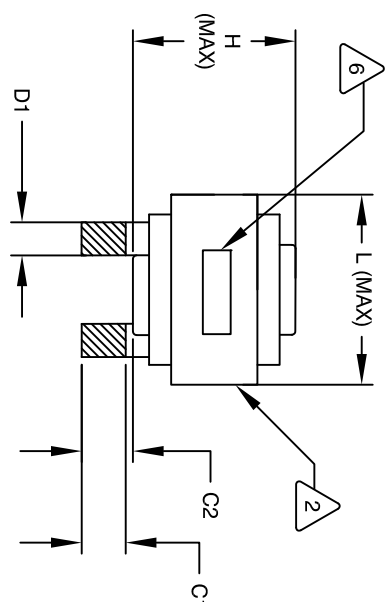
SCHEMATIC

7 BUILT TO ROHS COMPLIANCE AND LEAD FREE.

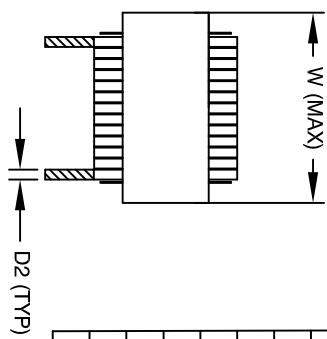
6 MARK PART NUMBER AND REVISION WHERE SHOWN

5 VARNISH PART AND CURE APPLY SILICONE WHERE SHOWN

4 CONSTRUCTION
WRAP TAPE AROUND CORES
WITH CORES AND MYLAR SHEETS
ASSEMBLE PRE FORMED FLAT RECTANGULAR HELICAL COIL



FRONT VIEW



SIDE VIEW

DIMENSIONAL TOLERANCE

Feature	mm	inch
C1	12.00 ± 1.00	0.47 ± 0.04
C2	13.00 ± 1.00	0.51 ± 0.04
D2	0.70 (TYP)	0.03 (TYP)
D1	7.00 (TYP)	0.30 (TYP)
L	57.15 MAX	2.25 MAX
W	57.15 MAX	2.25 MAX
H	44.15 MAX	1.74 MAX
P1	36.30 ± 1.00	1.43 ± 0.04
P2	27.00 ± 1.00	1.06 ± 0.04

DC BIAS TABLE

DC-BIAS	L
0A	394 uH
5A	346 uH
10A	298 uH
15A	251 uH
20A	211 uH
25A	177 uH
30A	148 uH
35A	123 uH
40A	82 uH

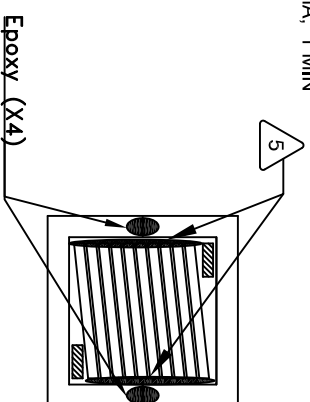
WEIGHT: 484 GRAM TYP
MAX INDUCTOR TEMP RATING: 200°C
RECOMMENDED OPERATING TEMP: -40°C TO 85°C
HI-POT TEST FOR WINDING TO CORE ISOLATION: 1000VDC @ 2mA, 1 MIN
INTERWINDING CAPACITANCE = 10pF TYP @ SRF
|Z| = 36 KILLO-OHMS TYP @ SRF
SRF = 2.1 MHZ TYP
RATED CURRENT: 40 AMPS WITH FORCED AIR FLOW
DCR = 15 MILLI-OHMS MAX.
DC BIAS: SEE TABLE ON THE RIGHT.
L = 390 uH ± 15%, MEASURED AT 10 KHZ, 0.25V, ZERO DC BIAS
SPECIFICATIONS @ 25°C:

3 VARNISH DOLPH or EQUAL
SILICONE DOW CORNING OR EQUAL
MYLAR SHEETS FOR SIDES AND CENTER LEG OF CORES
OUTER WRAP: 3M GLASS TAPE OR EQUAL
WIRE: UL RECOGNIZED 200°C RATED MAGNET WIRE
CORE: COMPACTED POWDERED CORE

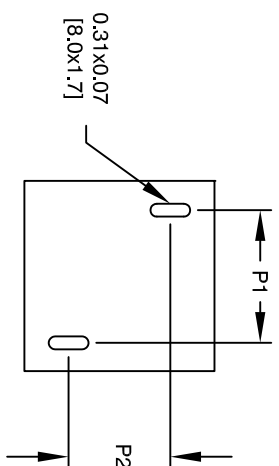
2 INSULATION CLASS 200°C REQUIRED
1 MATERIAL: UL RECOGNIZED 94V-0 FOR FLAMMABILITY

ANY TOLERANCE. THIS DIM. CAN VARY A LITTLE FROM PART TO PART.
"TYP" IN PARTS DIM. REFERS TO A NON-CRITICAL TYPICAL (AVERAGE) DIM. WITHOUT

NOTES: UNLESS OTHERWISE SPECIFIED, READ FROM BOTTOM UP.
CAGE CODE: 5DME2



BOTTOM VIEW



MOUNTING HOLES PATTERN

QTY	CODE IDENT	MFG. P/N	DESCRIPTION	ITEM NO.
			PARTS LIST	
			www.coilws.com	
			353 W. GROVE AVE	
			ORANGE, CA 92665	
			Coil Winding Specialist, Inc.	
			High Current Inductor,	
			Rectangular Helical Coil	
			390 uH, 40 Amps, Horizontal	
			SIZE DIM. NO.	REV
			B LCES28B6-391M-40AH	A1
			SCALE NOT_TO_SCALE	SHEET 1 OF 1

REVISION HISTORY

REV	ECN	DESCRIPTION	BR	DATE	CHK	DATE
A		PRODUCTION RELEASE	TN	02/05/19	JL	02/05/19
A1		UPDATED SPEC.	TN	06/12/2020	JL	06/12/2020