

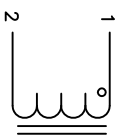
The information contained in this drawing is the sole property of Coil Winding Specialist, Inc. Any reproduction in part or whole without permission of Coil Winding Specialist, Inc. is prohibited.

DIMENSIONAL TOLERANCES INCHES (MM)											
A	B	C	D	E	F	G	H(X2)	I(X4)	J	K	P
NOM	NOM	NOM	TYP	TYP	TYP	TYP	TYP	NOM	NOM	NOM	TYP
4.58 [116.33]	2.93 [74.42]	3.40 [86.36]	1.00 [25.40]	0.24 [6.11]	1.00 [25.40]	0.46 [11.70]	0.195 [4.95]	0.20 [5.08]	1.15 [29.21]	1.98 [50.29]	2.80 [71.12]

REVISION HISTORY			
REV	ECN	DESCRIPTION	DATE
A		PRODUCTION RELEASE	09/28/22

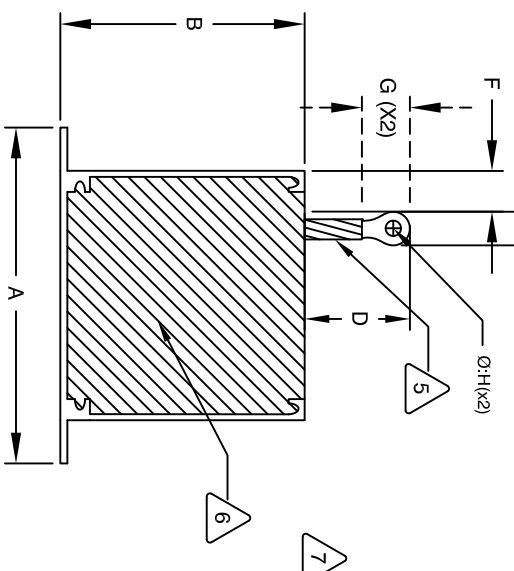
DC BIAS TABLE

DC BIAS (AMP)	L @ 1KHz (REF)
0	284uH
5	284uH
10	284uH
15	284uH
20	280uH
25	275uH
30	270uH

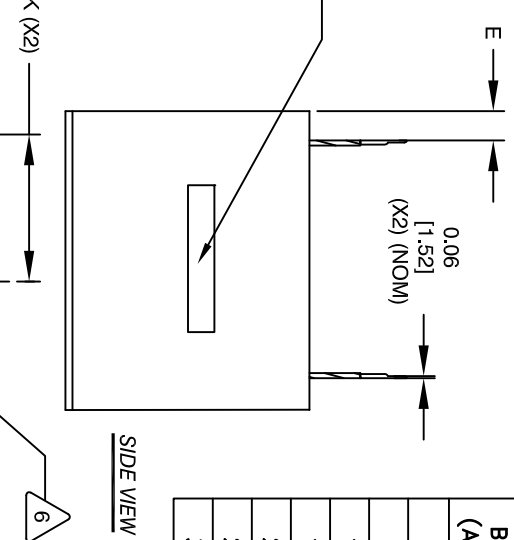


SCHEMATIC

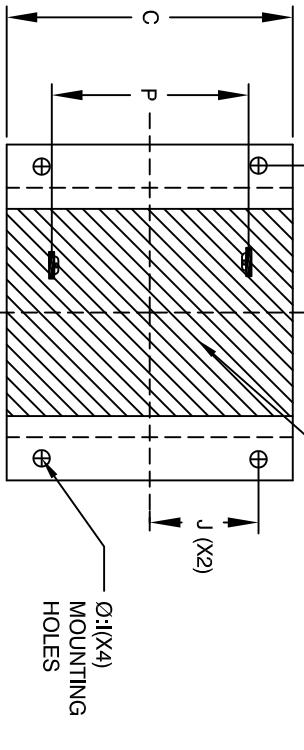
- 8 BUILT TO ROHS COMPLIANCE AND LEAD FREE.
- 7 MARK PART NUMBER, REVISION AND DATE CODE
- 6 ENCAPSULATE PART AND CURE
- 5 JOINTS WITH BLACK HEAT SHRINK TUBING AS SHOWN. SOLDER RING TERMINAL (X2) TO LEAD WIRES. COVER REMOVE INSULATION AND TIN LEADS. CRIMP AND
- 4 WRAP COIL WITH INSULATION TAPE. WIND COIL EVENLY SPACED ON COIL FORMER CONSTRUCTION



FRONT VIEW



SIDE VIEW



TOP VIEW

- 3 WEIGHT: 1760 GRAMS APPROX. MAX INDUCTOR TEMP RATING: 125°C RECOMMENDED OPERATING TEMP: -40°C TO 85°C HI-POT TEST FOR WINDING TO CORE ISOLATION: 1000VDC @ 2mA, 1 MIN INTERWINDING CAPACITANCE = 98pF TYP @ SRF | ZI = 1.65 KILO-OHMS TYP @ SRF SRF = 7.3 MHz TYP RATED CURRENT: 30 AMPS WITH SOME AIR FLOW DCR = 21 MILLI-OHMS MAX. DC BIAS: SEE TABLE ON THE RIGHT L = 280uH ± 15%, MEASURED AT 1 KHz, 0.25V, ZERO DC BIAS SPECIFICATIONS @ 25°C:
- 2 ENCLOSURE: ALUMINUM METAL EPOXY: UL APPROVED TYPE WIRE: UL RECOGNIZED 200°C RATED MAGNET WIRE CORE: MICROGAPPED FERRITE E-CORE
- 1 INSULATION CLASS 200°C REQUIRED MATERIAL: UL RECOGNIZED 94V-0 FOR FLAMMABILITY

ANY TOLERANCE. THIS DIM. CAN VARY A LITTLE FROM PART TO PART. "TYP" IN DIM. TABLE REFERS TO A NON-CRITICAL TYPICAL (AVERAGE) DIM. WITHOUT

NOTES: UNLESS OTHERWISE SPECIFIED, READ FROM BOTTOM UP. CAGE CODE: 5DME2

QTY		CODE	MFG. P/N	DESCRIPTION	ITEM NO.
UNLESS OTHERWISE SPECIFIED					
DIMENSIONING AND TOLERANCE PER ANSI Y14.5M					
ALL DIMENSIONS ARE IN INCHES AND [MILLIMETERS].					
TOLERANCE INCHES: .XXX=±.010 .XX=±.020 .XX=±.254 .XX=±.51					
TOLERANCE METRICS: .XXX=±.254 .XX=±.51					
ANGLE PROJECTION					
DO NOT SCALE DRAWING					
QTY	CODE	IDENT	MFG. P/N	DESCRIPTION	ITEM NO.
AUTOCAD		X			
SOLIDWORKS					
DRWN	TN	09/28/22			
ENGR	JL	09/28/22			
APPR	JL	09/28/22			
TITLE:		Micro-Gapped Ferrite Inductor			
PARTS LIST		www.coilws.com			
SCALE		NOT TO SCALE			
SIZE DIM. NO.		EEF65-281M-30A			
SHEET		1 OF 1			