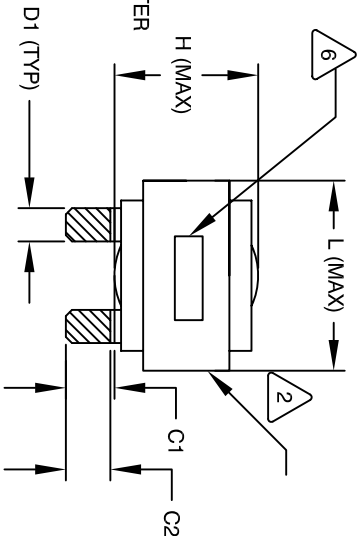


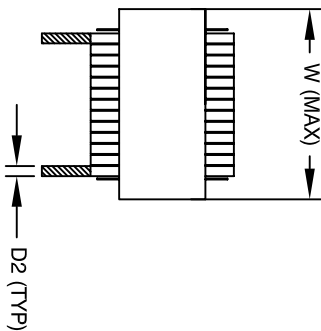
| REVISION HISTORY | | | | |
|------------------|-----|--------------------|-------------|--------------|
| REV | ECN | DESCRIPTION | SIGN & DATE | |
| A | | PRODUCTION RELEASE | BY RCL | DATE 6/22/11 |
| B | | CHANGE DCR VALUE | CHK MK | DATE 1/16/12 |



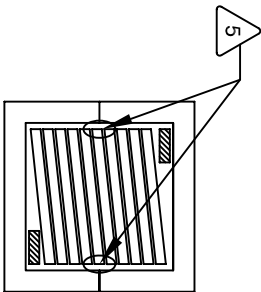
SCHEMATIC



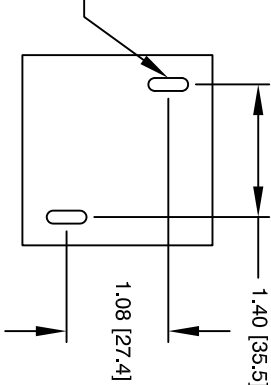
FRONT VIEW



SIDE VIEW



BOTTOM VIEW



MOUNTING HOLES PATTERN

| DIMENSIONAL TOLERANCE | | | |
|-----------------------|------------|-------------|--|
| | mm | inch | |
| C1 | 13.86±1.50 | 0.55 ± 0.06 | |
| C2 | 11.56±1.00 | 0.46 ± 0.04 | |
| D1 | 7.0 (TYP) | 0.28 (TYP) | |
| D2 | 0.7 (TYP) | 0.03 (TYP) | |
| L | 58.0 MAX | 2.29 MAX | |
| W | 58.0 MAX | 2.29 MAX | |
| H | 35.0 MAX | 1.37 MAX | |

| DC-BIAS | L |
|---------|---------|
| 0A | 331.3uH |
| 5A | 331.4uH |
| 10A | 322.7uH |
| 15A | 307.2uH |
| 20A | 284.5uH |
| 25A | 253.6uH |
| 30A | 210uH |
| 35A | 182uH |
| 40A | 162uH |

1. APPLICATION: OUTPUT CHOKE, HIGH DC-BIAS INDUCTOR, INPUT FILTER.
2. BUILT TO RoHS COMPLIANCE AND LEAD FREE.
3. MARK PART NUMBER AND REVISION WHERE SHOWN.
4. VANISH PART AND CURE.
APPLY SILICON WHERE SHOWN.
5. WRAP TAPE AROUND CORES WITH CORES AND NOMEX SPACERS ASSEMBLE PRE FORMED FLAT HELICAL COIL CONSTRUCTION.
6. WEIGHT: 487.8 GRAM (TYP)
RECOMMENDED OPERATING TEMP: -40°C TO 85°C AT 55 °C AMBIENT
HI-POT TEST FOR WINDING TO CORE ISOLATION. 1000VDC @ 2mA, 1 MIN
INTERWINDING CAPACITANCE @ 10KHZ = 19.06pF (TYP)
|z|@SRF=6.1 KILO-OHM
SRF=2.0 MHZ
RATED CURRENT: 40 AMPS
DCR= 14.5 MILLIOHM MAX. USING GW INSTEK GOM-801H OR EQUAL
L@DC BIAS: SEE TABLE ON RIGHT.
L = 340 uH ± 15%, MEASURED AT 10 KHZ, 0.25V, ZERO DC BIAS SPECIFICATIONS:

1. VANISH DOLPH or EQUAL
SILICON DOW CORNING OR EQUAL
NOMEX SPACERS FOR SIDE AND CENTER LEG OF CORES
OUTER WRAP: 3M GLASS OR EQUAL
WIRE: UL RECOGNIZED 200°C RATED MAGNET WIRE
CORE: COMPACTED POWDERED CORE

1. INSULATION CLASS 200°C REQUIRED
MATERIAL: UL RECOGNIZED 94V-0 FOR FLAMMABILITY

NOTES: UNLESS OTHERWISE SPECIFIED, READ FROM BOTTOM UP.
CAGE CODE: 5DME2

| QTY | CODE IDENT | MFG. P/N | DESCRIPTION | ITEM NO. |
|----------------------|------------|----------|---|----------|
| PARTS LIST | | | | |
| AUTOCAD SOLIDWORKS | | X | www.coilws.com sales@coilws.com | |
| DRAWN RL | | 2/11/11 | Coil Winding Specialist, Inc. 353 W. GROVE AVE ORANGE, CA 92665 | |
| CHECKED JLJU | | 2/11/11 | High Current Helical Inductor 340 uH, 40 Amps, Horizontal | |
| ENGR. JLJU | | 2/11/11 | SIZE Dwg. NO. EK55246-341M-40AH | |
| APPR. JLJU | | 2/11/11 | SCALE NOT_TO_SCALE | |
| DO NOT SCALE DRAWING | | | SHEET 1 OF 1 | |