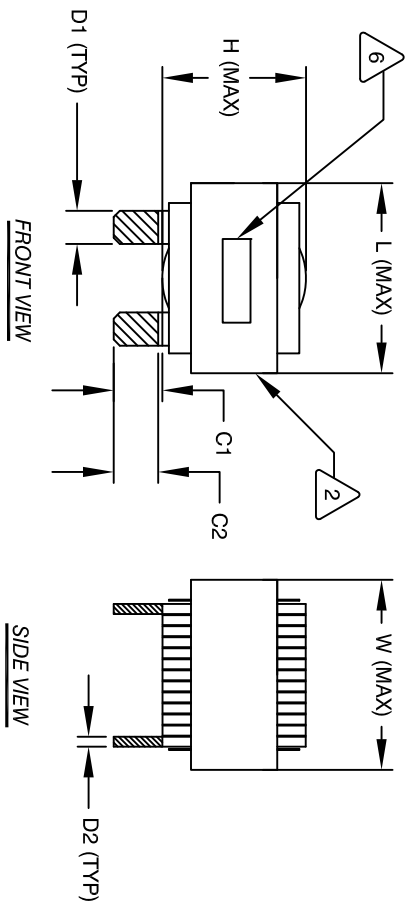
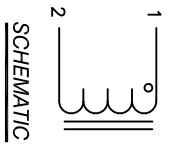


The information contained in this drawing is the sole property of Coil Winding Specialist, Inc. Any reproduction in part or whole without written permission of Coil Winding Specialist, Inc. is prohibited.

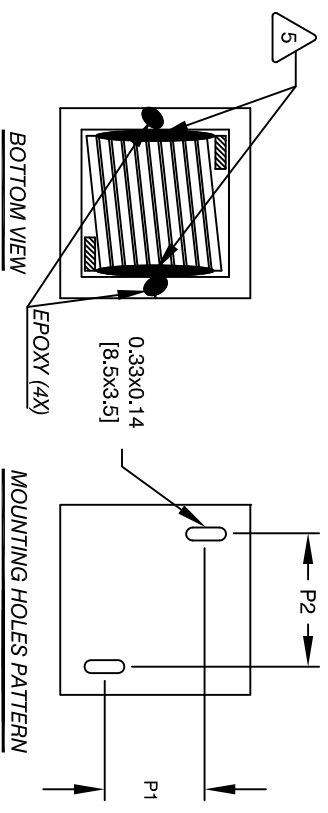
REVISION HISTORY

REV	ECN	DESCRIPTION	SIGN & DATE			
A	130806	PRODUCTION RELEASE	BY	DATE	CHK	DATE
B		SHOW EPOXY AND SILICONE AND CHANGE DIMENSIONS	RL	2/13/11	JCL	2/13/11
C		REVISED DIMENSIONAL TOLERANCE	JK	8/06/13	BO	8/06/13
D		REVISED ELECTRICAL SPEC.	TN	09/06/18	JL	09/06/18
			TN	01/29/19	JL	01/29/19



DIMENSIONAL TOLERANCE

	mm	Inch
C1	13±1.50	0.51±0.06
C2	12±1.50	0.47±0.06
D1	7.60 (TYP)	0.30 (TYP)
D2	2.60 (TYP)	0.10 (TYP)
L	57.0 MAX	2.25 MAX
W	57.0 MAX	2.25 MAX
H	37.0 MAX	1.46 MAX
P1	27.60 TYP	1.09 TYP
P2	34.40 TYP	1.35 TYP



DC-BIAS

	L
0A	14.3 uH
5A	13.8 uH
10A	13.7 uH
15A	13.6 uH
20A	13.4 uH
25A	13.2 uH
30A	13.2 uH
40A	12.7 uH
50A	12.3 uH
60A	11.9 uH
70A	11.5 uH
80A	10.9 uH
90A	10.6 uH
100A	10.2 uH

- 1 WIRE: UL RECOGNIZED 200°C RATED MAGNET WIRE
CORE: COMPACTED POWDER CORE
- 2 INSULATION CLASS 130°C REQUIRED

- 3 UNLESS OTHERWISE SPECIFIED
DIMENSIONING AND TOLERANCE PER ANSI Y14.5M
ALL DIMENSIONS ARE IN INCHES
AND [DIMETERS].
TOLERANCE INCHES: \pm = ±0.30°
 \pm XXX = ±0.10, \pm XX = ±0.20
TOLERANCE METRICS: \pm = ±0.30°
 \pm XXX = ±.254, \pm XX = ±.51
ANGLE PROJECTION DO NOT SCALE DRAWING
- 4 WIRE: UL RECOGNIZED 200°C RATED MAGNET WIRE
CORE: COMPACTED POWDER CORE

NOTES: UNLESS OTHERWISE SPECIFIED, READ FROM BOTTOM UP.

QTY	CODE IDENT	MFG. P/N	DESCRIPTION	ITEM NO.
			PARTS LIST	
			AUTOCAD SOLIDWORKS SIGN DATE	X
			DRAWN RL 2/11/11	
			CHKD JLAU 2/11/11	
			ENGR JLAU 2/11/11	
			APPR JLAU 2/11/11	
			SCALE B	
			SIZE DIM. NO. B	
			NOT_TO_SCALE	
			SHEET 1 OF 1	