

The information contained in this drawing is the sole property of Coil Winding Specialist, Inc. Any reproduction in part or whole without written permission of Coil Winding Specialist, Inc. is prohibited.

REVISION HISTORY

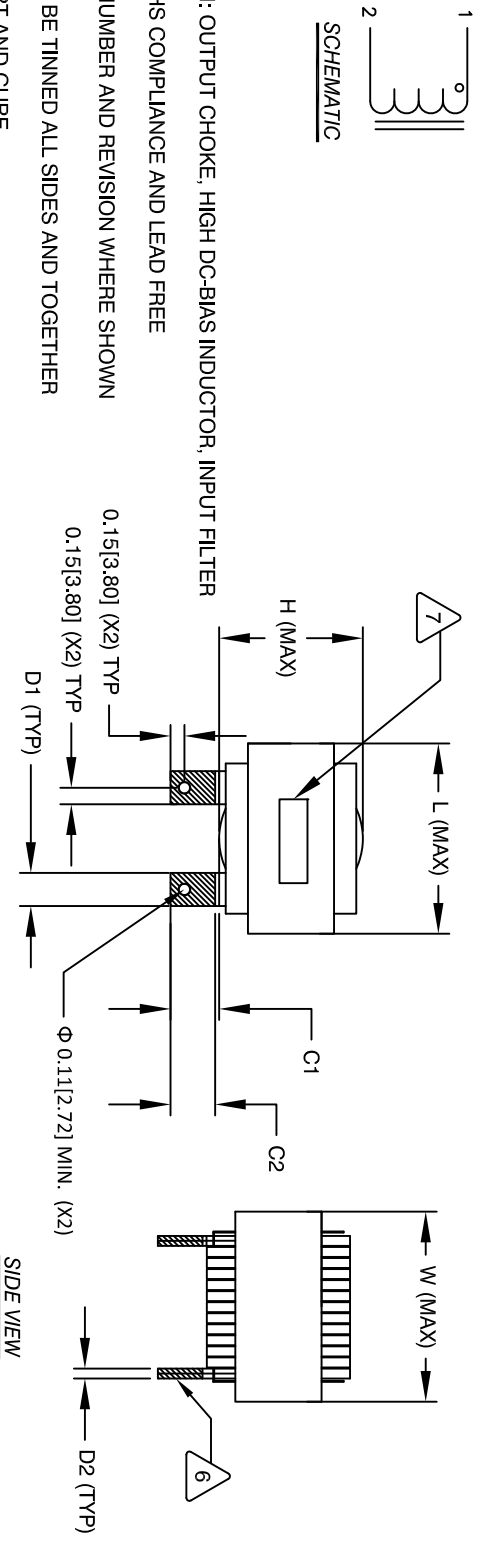
REV	ECN	DESCRIPTION	DATE
A		PRODUCTION RELEASE	11/28/18

SIGN & DATE

BY	DATE	CHK	DATE
TN	11/28/18	JL	11/28/18

DIMENSIONAL TOLERANCE

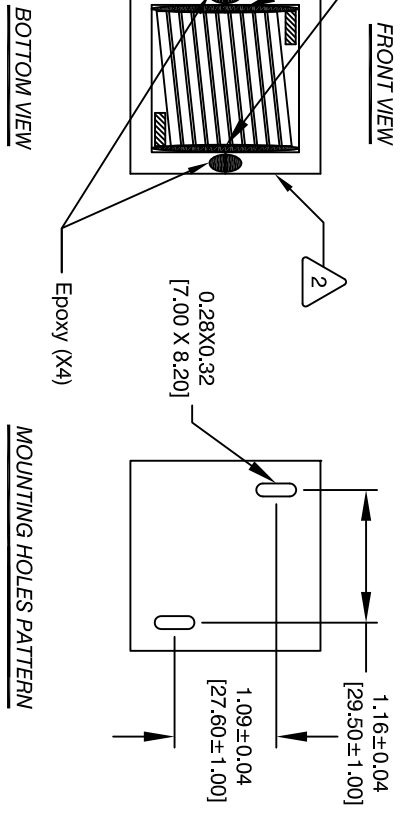
	mm	inch
C1	13.0±1.00	0.51±0.04
C2	12.0±0.50	0.47±0.02
D1	7.6 (TYP)	0.30 (TYP)
D2	5.2 (TYP)	0.20 (TYP)
L	56.00 MAX	2.20 MAX
W	57.0 MAX	2.24 MAX
H	36.0 MAX	1.41 MAX



- 1 APPLICATION: OUTPUT CHOKE, HIGH DC-BIAS INDUCTOR, INPUT FILTER
- 2 BUILT TO ROHS COMPLIANCE AND LEAD FREE
- 3 MARK PART NUMBER AND REVISION WHERE SHOWN
- 4 LEADS MUST BE TINNED ALL SIDES AND TOGETHER
- 5 VARNISH PART AND CURE
APPLY SILICONE WHERE SHOWN
WRAP TAPE AROUND CORES
WITH CORES AND MYLAR SHEETS
ASSEMBLE PRE FORMED FLAT HELICAL COIL
CONSTRUCTION
- 6 WEIGHT: 476 GRAMS (TYP)
MAX INDUCTOR TEMP RATING: 200°C
RECOMMENDED OPERATING TEMP: -40°C TO 85°C
HI-POT TEST FOR WINDING TO CORE ISOLATION: 1000VDC @ 2mA, 1 MIN
INTERWINDING CAPACITANCE = 10.9pF TYP @ SRF
|Z| = 1.43 KLO-OHMS TYP @ SRF
SRF = 24.4 MHZ TYP
RATED CURRENT: 300 AMPS WITH FORCED AIR FLOW
DCR = 0.3 MILLIOHM MAX.
INDUCTOR DC BIAS: SEE TABLE ON THE RIGHT
L = 3.5 uH ± 15%, MEASURED AT 10 KHZ, 0.25V, ZERO DC BIAS
SPECIFICATIONS @ 25°C:

- 7 VARNISH DOLPH or EQUAL
SILICONE DOW CORNING or EQUAL
MYLAR SHEETS FOR SIDES AND CENTER LEG OF CORES
OUTER WRAP: 3M GLASS OR EQUAL
WIRE: UL RECOGNIZED 200°C RATED MAGNET WIRE
CORE: COMPACTED POWDERED CORE

- 8 INSULATION CLASS 200°C REQUIRED
MATERIAL: UL RECOGNIZED 94V-0 FOR FLAMMABILITY
- NOTES: UNLESS OTHERWISE SPECIFIED, READ FROM BOTTOM UP.
CAGE CODE: 5DME2



MOUNTING HOLES PATTERN

QTY	CODE IDENT	MFG. P/N	DESCRIPTION	ITEM NO.
				300A

PARTS LIST

AUTOCAD SOLIDWORKS	DATE	DATE	DATE

TITLE: High Current Helical Inductor
3.5 uH, 300 Amps, Horizontal

UNLESS OTHERWISE SPECIFIED	UNLESS OTHERWISE SPECIFIED	UNLESS OTHERWISE SPECIFIED	UNLESS OTHERWISE SPECIFIED
DIMENSIONING AND TOLERANCE PER ANSI Y14.5M AND [DIMETERS].	ALL DIMENSIONS ARE IN INCHES	TOLERANCE INCHES: .XXX±.010 .XX±.020 TOLERANCE METERS: .XXX±.254 .XX±.51	ANGLE PROJECTION