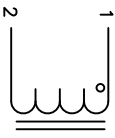
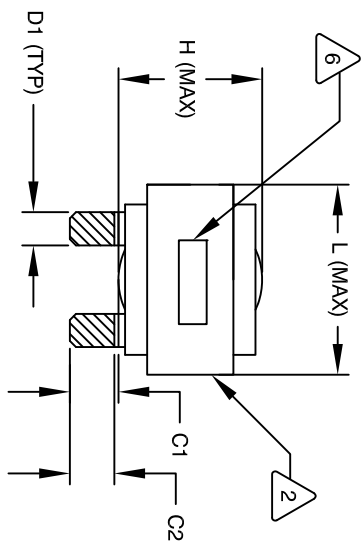


REVISION HISTORY

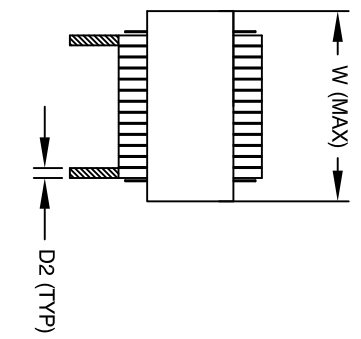
REV	ECN	DESCRIPTION	SIGN & DATE			
A		PRODUCTION RELEASE	BY	DATE	CHK	DATE
B		ELECTRICAL CHANGE	RL	2/13/11	JCL	2/13/11
			SH	9/20/11	JCL	9/20/11



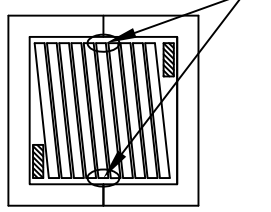
SCHEMATIC



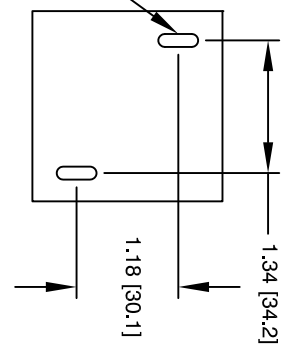
FRONT VIEW



SIDE VIEW



BOTTOM VIEW



MOUNTING HOLES PATTERN

DIMENSIONAL TOLERANCE

	mm	Inch
C1	14.23±1.50	0.56 ± 0.06
C2	12.12±1.00	0.48 ± 0.04
D1	7.50 (TYP)	0.30 (TYP)
D2	1.35 (TYP)	0.05 (TYP)
L	58 MAX	2.29 MAX
W	58 MAX	2.29 MAX
H	36 MAX	1.42 MAX

DC-BIAS	L
0A	106 uH
5A	100 uH
10A	94 uH
15A	86 uH
20A	76 uH
25A	67 uH
30A	65 uH
35A	60 uH
40A	55 uH
45A	51 uH
50A	46 uH

- BUILT TO ROHS COMPLIANCE AND LEAD FREE.
- MARK PART NUMBER AND REVISION WHERE SHOWN
- VANISH PART AND CURE
APPLY SILICON WHERE SHOWN
- WRAP TAPE AROUND CORES WITH CORES AND NOMEX SPACERS ASSEMBLE PRE FORMED FLAT HELICAL COIL CONSTRUCTION
WEIGHT: 445 GRAM (TYP)
MAX INDUCTOR TEMP RATING: 200°C
RECOMMENDED OPERATING TEMP: -40°C TO 85°C
HIPOT TEST FOR WINDING TO CORE ISOLATION, 1000VDC @ 2mA, 1 MIN INTERWINDING CAPACITANCE @ 10KHZ = 17pF (TYP)
|Z|@SRF=6.6 KIL-OHM (TYP)
SRF=3.7 MHz (TYP)
RATED CURRENT: 60 AMPS
DCR = 4.0 MILLI-OHM MAX.
L@DC BIAS: SEE TABLE ON RIGHT.
L = 110uH ± 15%, MEASURED AT 10 KHZ, 0.25V, ZERO DC BIAS SPECIFICATIONS:
- VANISH DOLPH or EQUAL
SILICON DOW CORNING OR EQUAL
NOMEX SPACERS FOR SIDE AND CENTER LEG OF CORES
OUTER WRAP: 3M GLASS OR EQUAL
WIRE: UL RECOGNIZED 200°C RATED MAGNET WIRE
CORE: COMPACTED POWDERED CORE

- INSULATION CLASS 200°C REQUIRED MATERIAL: UL RECOGNIZED 94V-0 FOR FLAMMABILITY

NOTES: UNLESS OTHERWISE SPECIFIED, READ FROM BOTTOM UP.
CAGE CODE: 5DME2

QTY	CODE IDENT	MFG. P/N	DESCRIPTION	ITEM NO.
			PARTS LIST	
			www.coilw.com sales@coilw.com	
			Coil Winding Specialist, Inc. 353 W. GROVE AVE ORANGE, CA 92665	
			TITLE: High Current Helical Inductor 110 uH, 60 Amps, Horizontal	
			SIZE Dwg. NO. ESS55246-111M-60AH	
			SCALE NOT_TO_SCALE	
			SHEET 1 OF 1	