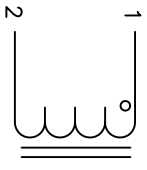


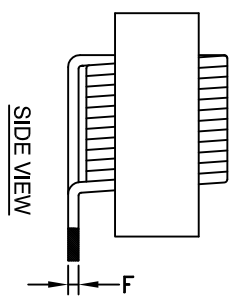
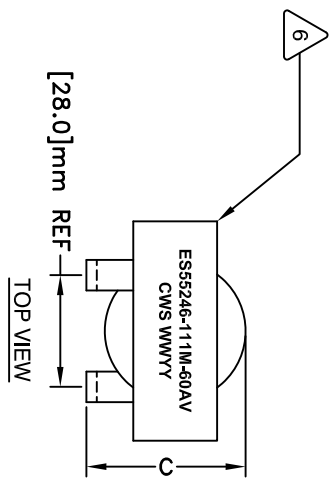
The information contained in this drawing is the sole property of Coil Winding Specialist, Inc. Any reproduction in part or whole without written permission of Coil Winding Specialist, Inc. is prohibited.

DIMENSIONAL TOLERANCE					
A	B	C	D (LEAD)	FILEAD DIM1 (LEAD DIM)	X
MAX 2.28" [58.0]	MAX 2.28" [58.0]	MAX 1.65" [42.0]	MAX 1.65" [42.0]	TYP 0.236" [6.00]	TYP 0.053" [1.35]
				TYP 0.079" [2.00]	TYP 0.295" [7.50]
					REF 1.10" [28.0]

REVISION HISTORY			
REV	ECN	DESCRIPTION	DATE
A		PRODUCTION RELEASE	05/03/19



SCHEMATIC



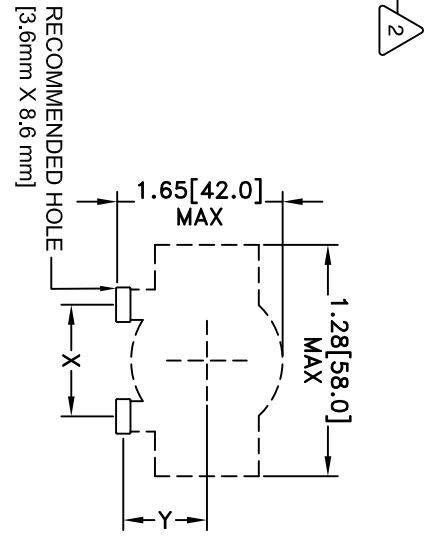
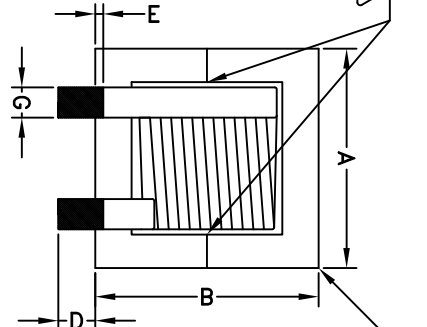
DC-BIAS	L
0A	106 uH
5A	100uH
10A	94 uH
15A	86 uH
20A	76 uH
25A	67 uH
30A	65 uH
35A	60 uH
40A	55 uH
45A	51 uH
50A	46 uH

[28.0]mm REF
TOP VIEW

SIDE VIEW

- 7 BUILT TO ROHS COMPLIANCE AND LEAD FREE
- 6 MARK PART NUMBER AND REVISION WHERE SHOWN
- 5 VARNISH PART AND CURE
APPLY SILICONE WHERE SHOWN
- WRAP TAPE AROUND CORES
WITH CORES AND NOMEX SPACERS
ASSEMBLE PRE FORMED FLAT HELICAL COIL
CONSTRUCTION

WEIGHT: 436 GRAM (TYP)
RECOMMENDED OPERATING TEMP: -40°C TO 85°C AT 55°C AMBIENT
HI-POT TEST FOR WINDING TO CORE ISOLATION: 1000VDC @ 2mA, 1 MIN
INTERWINDING CAPACITANCE = 17pF (TYP) @ SRF
|Z| = 6.6 KILO-OHMS (TYP) @ SRF
SRF = 3.7 MHz TYPICAL
RATED CURRENT: 60 AMPS
DCR = 4.0 MILLIOHMS MAX., USING GW INSTEK GOM-801H OR EQUAL
INDUCTANCE @ DC BIAS: SEE TABLE ON THE RIGHT
L = 110uH ± 15%, MEASURED AT 10 KHZ, 0.25V, ZERO DC BIAS
SPECIFICATIONS:



MOUNTING HOLE PATTERN
(TOP VIEW)

- 3 VARNISH DOLPH or EQUAL
SILICONE DOW CORNING OR EQUAL
NOMEX SPACERS FOR SIDE AND CENTER LEG OF CORES
OUTER WRAP: 3M GLASS TAPE OR EQUAL
WIRE: UL RECOGNIZED 200°C RATED MAGNET WIRE
CORE: COMPACTED POWDERED CORE
- 2 INSULATION CLASS 200°C REQUIRED
MATERIAL: UL RECOGNIZED 94V-0 FOR FLAMMABILITY

NOTES: UNLESS OTHERWISE SPECIFIED, READ FROM BOTTOM UP.
CAGE CODE: 5DME2

QTY	CODE IDENT	MFG. P/N	DESCRIPTION	ITEM NO.
			PARTS LIST	
			Coil Winding Specialist, Inc. 353 W GROVE AVE ORANGE, CA 92665	
			High Current Helical Inductor 110 uH, 60 Amps, Vertical	
			www.coilws.com sales@coilws.com	
			DRWN: TN ENGR: JL	
			DATE: 05/03/19	
			DATE: 05/03/19	
			APPR: JL	
			DATE: 05/03/19	
			SCALE: B	
			NOT_TO_SCALE	
			SHEET 1 OF 1	