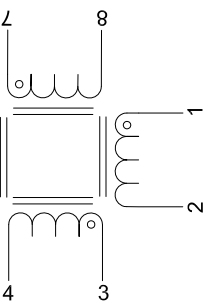
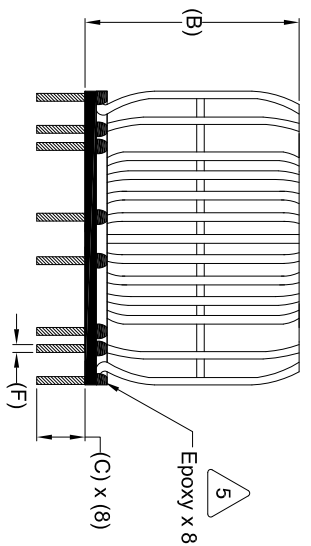


DIMENSIONAL TOLERANCE INCHES [MM]						
A	B	C	E	F	G	
Max	Max	Min	Typ	Typ	Typ	
3.94 [100.00]	1.95 [49.52]	0.50 [12.70]	3.47 [88.00]	0.09 [2.30]	3.31 [84.00]	



- BUILT TO ROHS COMPLIANCE
- LABEL PART NUMBER AT THE BOTTOM OF THE BASE.
- APPLY ADHESIVE BETWEEN COIL AND BASE.
- STRIP AND TIN LEADS (NO INSULATION IS ALLOWED BELOW THE BASE LEVEL.)

- WEIGHT = ~796 GRAMS

OPERATING TEMP RANGE = -40°C TO 125°C

MAX TEMP RISE = 40°C WITH FORCED AIRFLOW.

INTERWINDING ISOLATION = 2000 VOLTS RMS.

DCR ON EACH WINDING = 6.5 mΩ MAX

SRF ~ 286 KHZ TYP

RATED VOLTAGE = 1000 VAC OR VDC

RATED CURRENT = 30 AMPS

LEAKAGE INDUCTANCE = 14 μH TYP @ 10KHZ, 0.25 Vrms.

INTERWINDING CAPACITANCE = 27 pF TYP @ SRF

IMPEDANCE = 11 kΩ NOM @ SRF

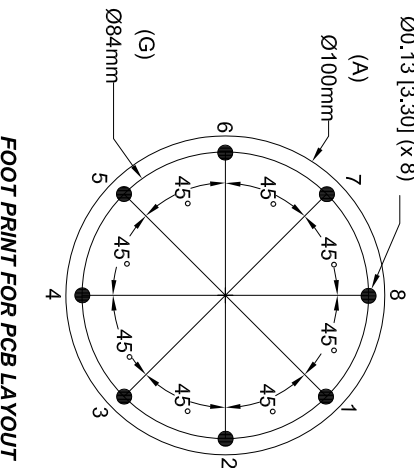
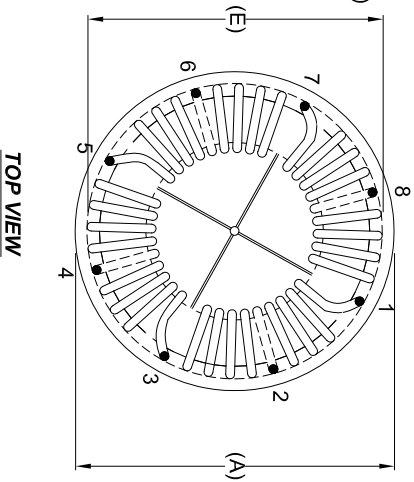
L = 17 mH MIN @ 10KHZ, 0.25 Vrms, 0 ADC
- SPECIFICATIONS AT 25°C:

- WIRE: UL RECOGNIZED 200°C RATED MAGNET WIRE  
CWS BYTEMARK OR OTHER APPROVED PART  
CORE: NANOCRYSTALLINE OR AMORPHOUS CORE
- CASE RATING CLASS B (130°C) REQUIRED  
MATERIAL: UL RECOGNIZED FOR FLAMMABILITY

NOTES: UNLESS OTHERWISE SPECIFIED, READ NOTES FROM BOTTOM TO TOP.  
CAGE CODE: 5DMEZ

REVISION HISTORY			
REV	ECN	DESCRIPTION	SIGN & DATE
A	N/A	PRODUCTION RELEASE	AK 5/24/16 JL 5/24/16

Recommended Pin Holes  
Ø0.13 [3.30] (x 8)



FREQ (KHz)	Z  (kΩ)
0.5	0.07
1	0.14
10	1.32
20	2.47
50	4.74
75	5.90
100	6.79
300	11.60
500	10.50
1000	5.12
3000	1.41
5000	0.66
7000	0.26
10000	0.35

AUTOCAD SOLIDWORKS		www.colwinds.com		Coil Winding Specialist Inc.	
SIGN	DATE	sales@colwinds.com	353 West Grove Ave	Orange, California	92885
DRAWN AK	5/19/16	TITLE: Nanocrystalline Inductor Four-Phase Common Mode Choke Horizontal Mount			
CHECKED BO	5/19/16	SCALE N/A			
ENGR. JLAU	5/19/16	SIZE DWG. NO. FPC-173U-B30A			
APPR. JLAU	5/19/16	REV A			
DO NOT SCALE DRAWING		SHEET 1 OF 1			