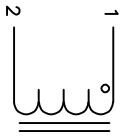


DIMENSIONAL TOLERANCES INCHES (MM)							
A	C	D	L1	L	W	H	
TYP	TYP	MIN	TYP	MAX	MAX	MAX	
4.00	0.50	12.00	11.00	16.54	4.85	3.80	
[101.6]	[12.70]	[304.80]	[279.40]	[420.00]	[118.10]	[96.50]	

REVISION HISTORY			
REV	ECN	DESCRIPTION	SIGN & DATE
A		PRODUCTION RELEASE	BR JL 12/18/17 JLAU 12/18/17
A1	100323	UPDATED MECH. SPEC. & REVISED DESCRIPTION	TN JL 10/03/23 JL 10/03/23



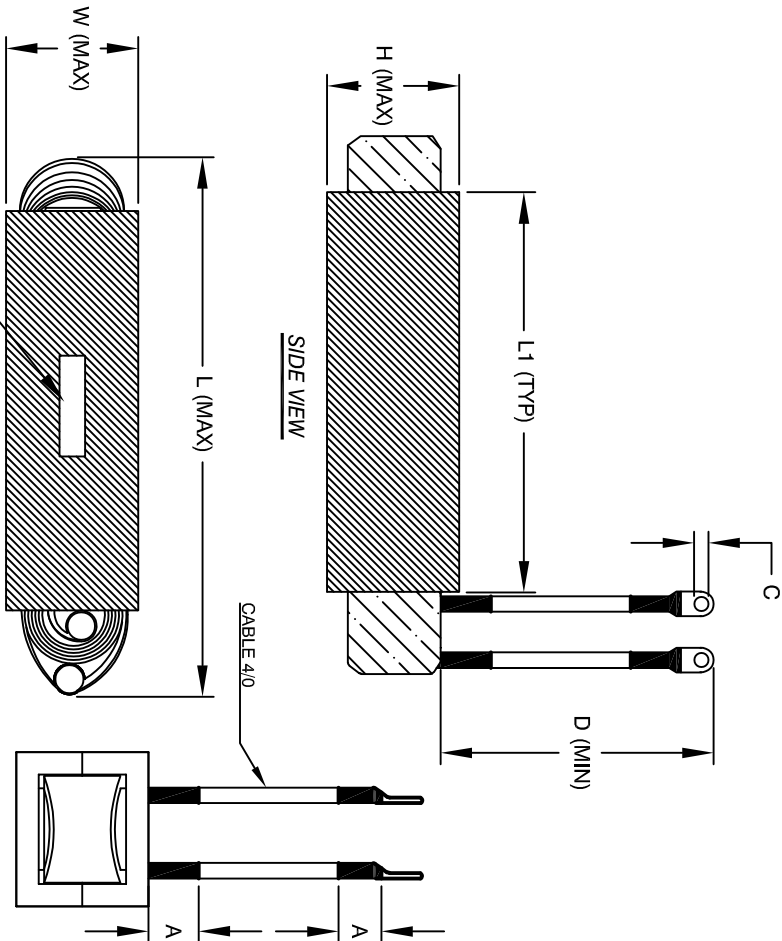
SCHEMATIC

- 8 APPLICATION: OUTPUT CHOKE, HIGH CURRENT INDUCTOR, INPUT FILTER
- 7 BUILT TO ROHS COMPLIANCE
- 6 LABEL PART NUMBER AND REVISION WHERE SHOWN
- 5 VARNISH AND CURE
- 4 APPLY SILICONE IF REQUIRED
- 3 WRAP TAPE AROUND CORES
- 2 WITH CORES AND NOMEX
- 1 PRE FORMED FLAT COPPER SHEETS
- CONSTRUCTION:

WEIGHT: .46 LB (TYP)
 RECOMMENDED OPERATING FREQUENCY: 60Hz TO 500KHz
 RECOMMENDED AMBIENT OPERATING TEMP: -40°C TO 105°C
 HI-POT TEST FROM WINDING TO CORE 1000VDC @ 2mA, 1 MIN
 INTERWINDING CAPACITANCE = 256pF TYP @ SRF
 IMPEDANCE = 8.51 KILO-OHM TYP @ SRF
 SRF = 790 KHz TYPICAL
 RATED CURRENT: 450 AMPS, APPROPRIATE AIR FLOW NEEDED.
 DCR = 1.2 MILLI-OHM MAX.
 L@DC BIAS: SEE TABLE ON THE RIGHT
 L = 120uH ± 10%, MEASURED AT 1 KHz, 0.25V, ZERO DC BIAS
 SPECIFICATIONS:

- BAKE VARNISH
- SILICONE DOW CORNING OR EQUAL
- OUTER WRAP: 3M GLASS OR EQUAL
- CORE: COMPACTED POWDERED CORE
- MATERIAL: UL RECOGNIZED

ANY TOLERANCE. THIS DIM. CAN VARY A LITTLE FROM PART TO PART.
 "TYP" IN DIM. TOL. REFERS TO A NON-CRITICAL TYPICAL (AVERAGE) DIM. WITHOUT
 NOTES: UNLESS OTHERWISE SPECIFIED, READ FROM BOTTOM UP.
 CAGE CODE: 5DME2



DC BIAS TABLE		
DC BIAS	L @ 1KHz (REF)	
0A	120uH	
120A	102uH	
210A	91uH	
300A	77uH	
400A	67uH	
450A	63uH	

PARTS LIST

UNLESS OTHERWISE SPECIFIED		DIMENSIONING AND TOLERANCE PER ANSI Y14.5M		ALL DIMENSIONS ARE IN INCHES AND [MILLIMETERS]		TOLERANCE INCHES: XXX±.010 .XX±.020 TOLERANCE METRICS: .XXX±.254 .XX±.51		ANGLE PROJECTION		DO NOT SCALE DRAWING	
AUTOCAD	X	DRWN	JL	12/18/17	TITLE:	High Current Inductor		SCALE	NOT_TO_SCALE	SHEET	1 OF 1
SOLIDWORKS		SIGN	JLAU	12/18/17	ENGR:	JLAU	12/18/17	SIZE [DIM. NO.]	HCS-121M-450A	REV	A1
www.coilw.com		Coil Winding Specialist, Inc.		353 W GROVE AVE		ORANGE, CA 92865					